

SPHERE VASE SQUARE SHISEN BIG

The Sphere collection has become synonymous with the visual language and the signature series of 101 Copenhagen. The series is a family of unique silhouettes and textures gathering in a decorative and sculptural manner. Elegantly sculpted, each vase is finished with an intricate ornate detailing. Inspired by ancient Chinese vases, a palette of faded earth tones is characteristic of the Sphere collection which was developed in close collaboration with highly skilled ceramists, ensuring the precise contrast between the smooth shapes and sharp edges.

Sphere Shisen is a new edition to the Sphere series, offering a unique detailed finish, with the attempt to create a unique surface of hundreds of small circles fading into a tactile pattern. Shisen is Japanese for a mesh or the way of seeing things.

As it is a hand glazed nature product, the colours may vary slightly and is meticulously glazed on the inside with a waterproof lacquer, ensuring that the vase is entirely waterproof.

Designed by Kristian Sofus Hansen & Tommy Hyldahl.

Product no: 245105

Type: Vase - Indoor

Designer / Year of design:
Kristian Sofus Hansen & Tommy Hyldahl, 2021

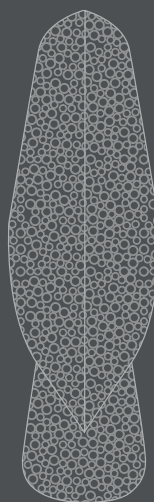
Colour: Shisen - Sand
Material: Ceramic

Care instructions:
Use a soft dry cloth to clean the product.
Do not use household cleaners.

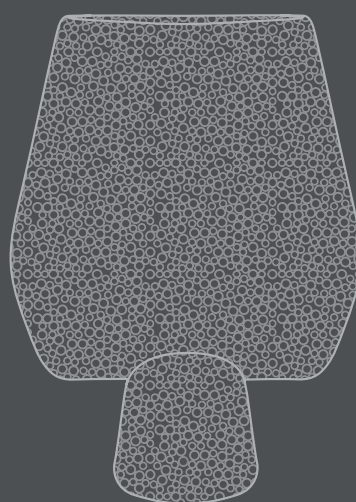
Dimensions: L33 / W17 / H44 CM
Country of origin: CN

Product weight: 3,5 Kgs

Packaging:
Dimensions: L38,5 / W22,5 / H50 CM
Total weight incl. product: 5,00 Kgs
Number of parcels: 1
Material: Brown cardboard



17 CM



33 CM

44 CM