

## FOUR HANDS



# Cave by Jess Engle

Flax • 234478-001

## Overview

Raised between Ethiopia, Malawi, Togo, and South Africa, the now-Austinite's worldly upbringing can be sensed in her culture-rich works. A moody landscape is beautifully captured and enhanced with a texture-rich varnish. Framed within black maple. If not currently in stock, this texture-enhanced piece ships within three weeks. Handmade in Austin, Texas.

## Details

### Overall Dimensions

60.00"w x 2.50"d x 40.00"h

### Colors

Flax, Black 2.5 Maple, White

### Materials

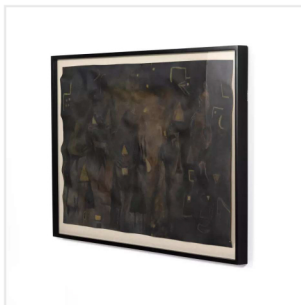
Linen Backer, American Maple, Matte Canvas

### Weight

35.00 lb

### Volume

7.63 cu ft



**This item is made to order in Austin, Texas and will be ready to ship in 1-3 weeks.**

As of 12/8/2023