

FOUR HANDS



Mono 1 & 2 by Dan Hobday

Black 2.5 Maple • 237499-001

Overview

Vertical folds craft soft ridges and dimension, highlighted by a black spacer. Bold, black acrylic contrasts against a lighter background, with swirling accents in a deep blue tint. Hang horizontally or vertically for ultimate versatility. If not currently in stock, this texture-enhanced piece ships within three weeks. Handmade in Austin, Texas.

Details

Overall Dimensions

60.00"w x 2.50"d x 40.00"h

Colors

Black 2.5 Maple, Clear Acrylic, White

Materials

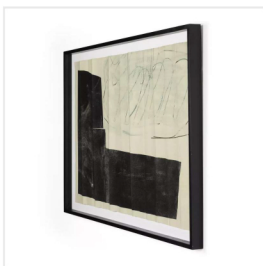
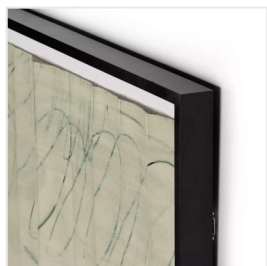
American Maple, Acrylic Glazing, Matte Paper

Weight

30.00 lb

Volume

7.63 cu ft



This item is made to order in Austin, Texas and will be ready to ship in 1-3 weeks.

As of 12/11/2023