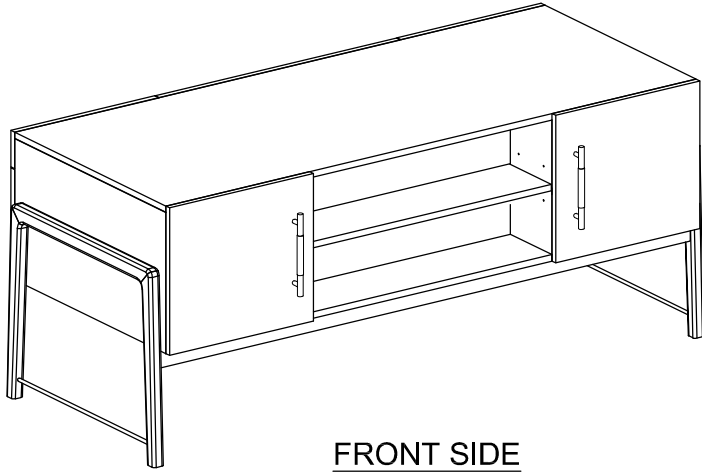
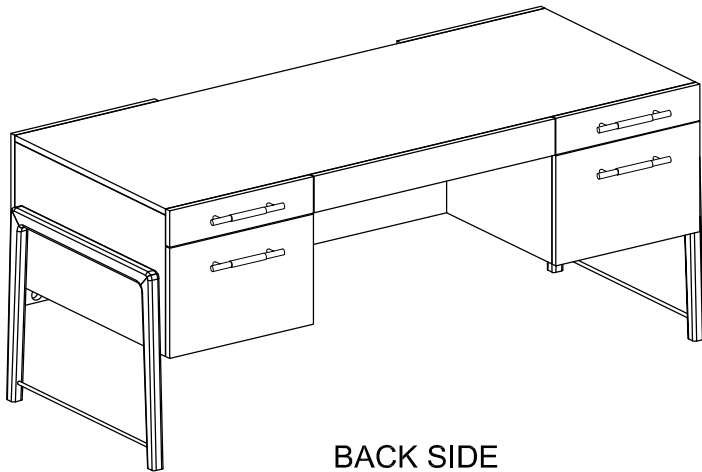


ASSEMBLY INSTRUCTION FOR MODEL: ROSEDALE EXECUTIVE DESK



FRONT SIDE



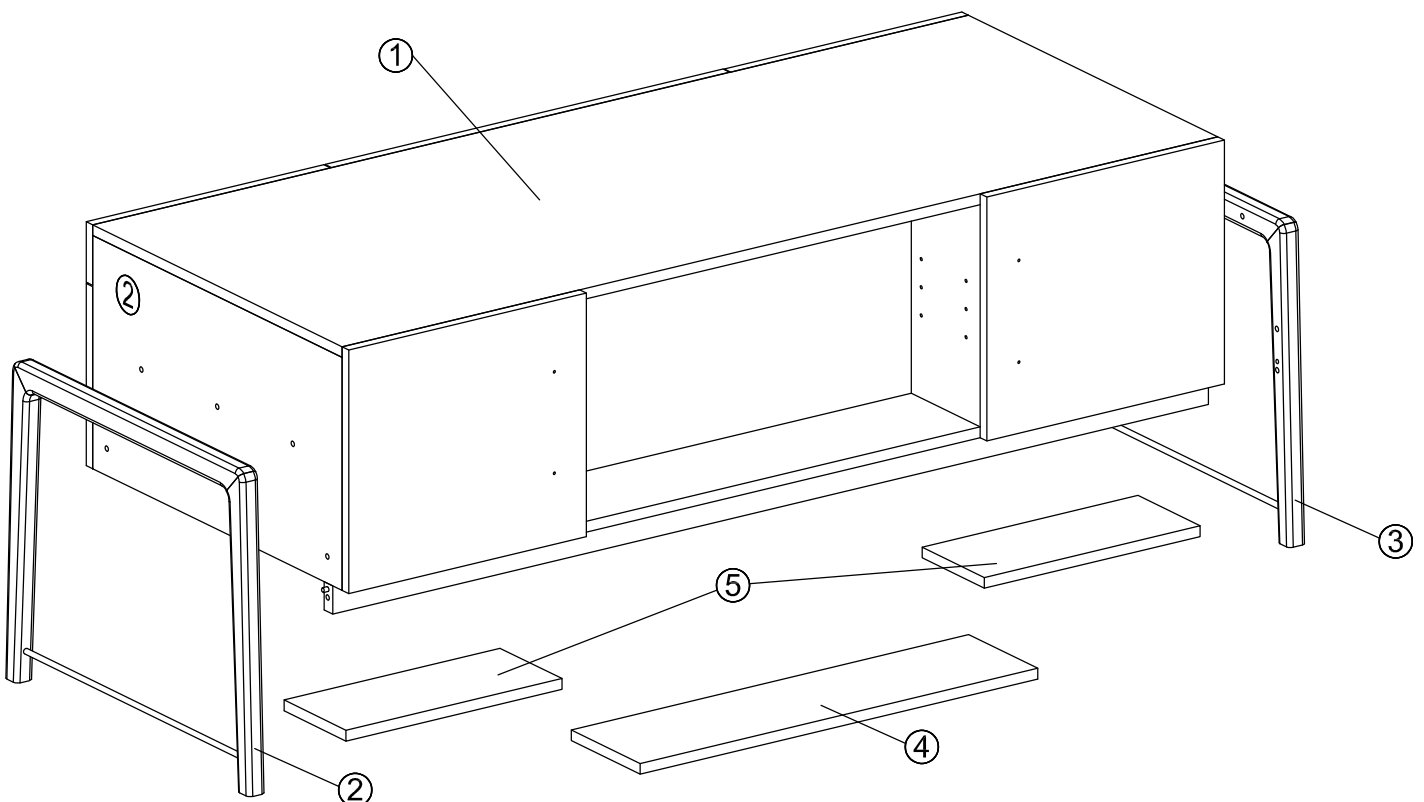
BACK SIDE

HARDWARE LIST

A		Bolt	8mm x 35mm	12
B		Lock Washer	8mm	12
C		Flat Washer	8mm x 20mm	10
D		Arc Washer	14mm x 25mm	2
E		Allen Wrench	4mm	1
F		Shelf Pin	17mm x 21mm	12
G		Wood Screw	3.5mm x 12mm	20
H		Mending Plate	10mm x 45mm	8
I		Short File Rod	25mm x 406mm	4
J		Long File Rod	25mm x 434mm	4

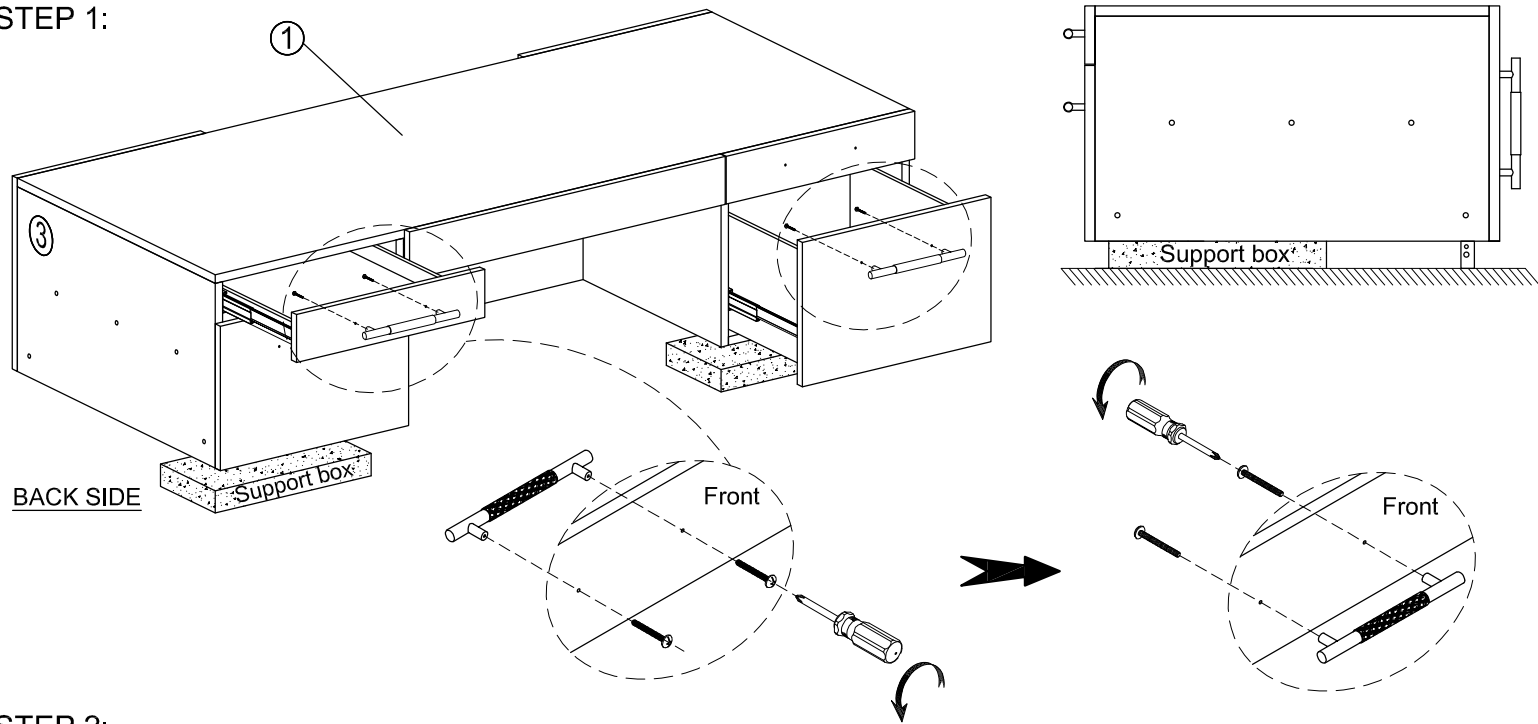
*** For your safety, assembly by two or more adults is strongly recommended.**

*** Please make sure pay attention when up side down.**

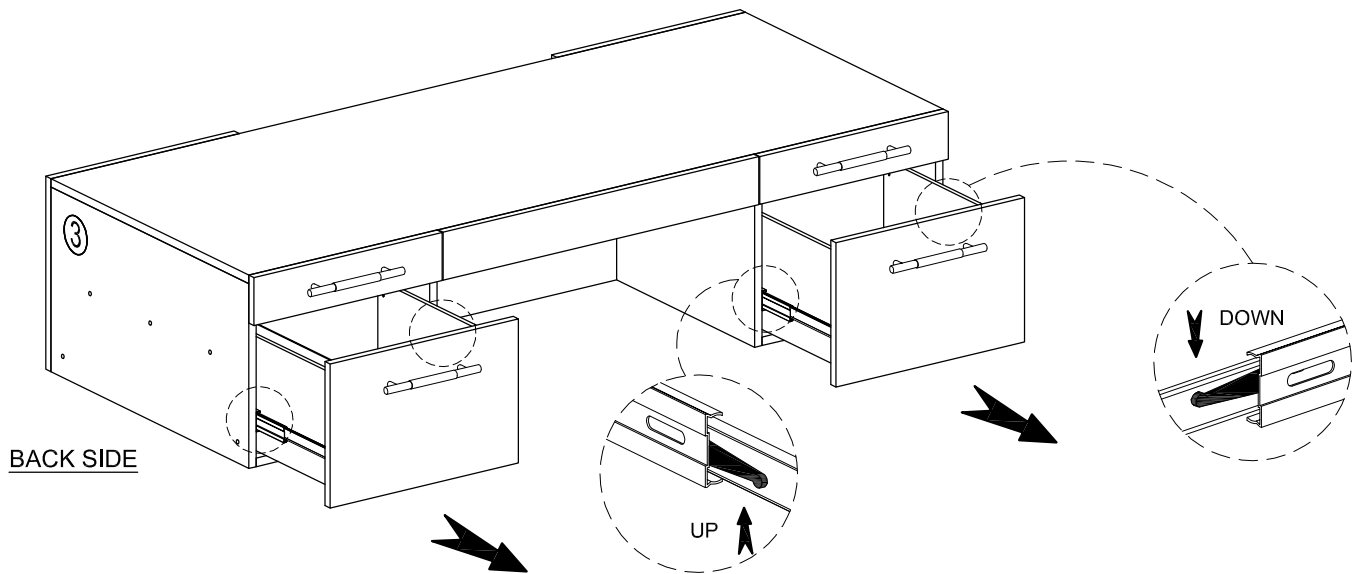


ASSEMBLY INSTRUCTION FOR MODEL: ROSEDALE EXECUTIVE DESK

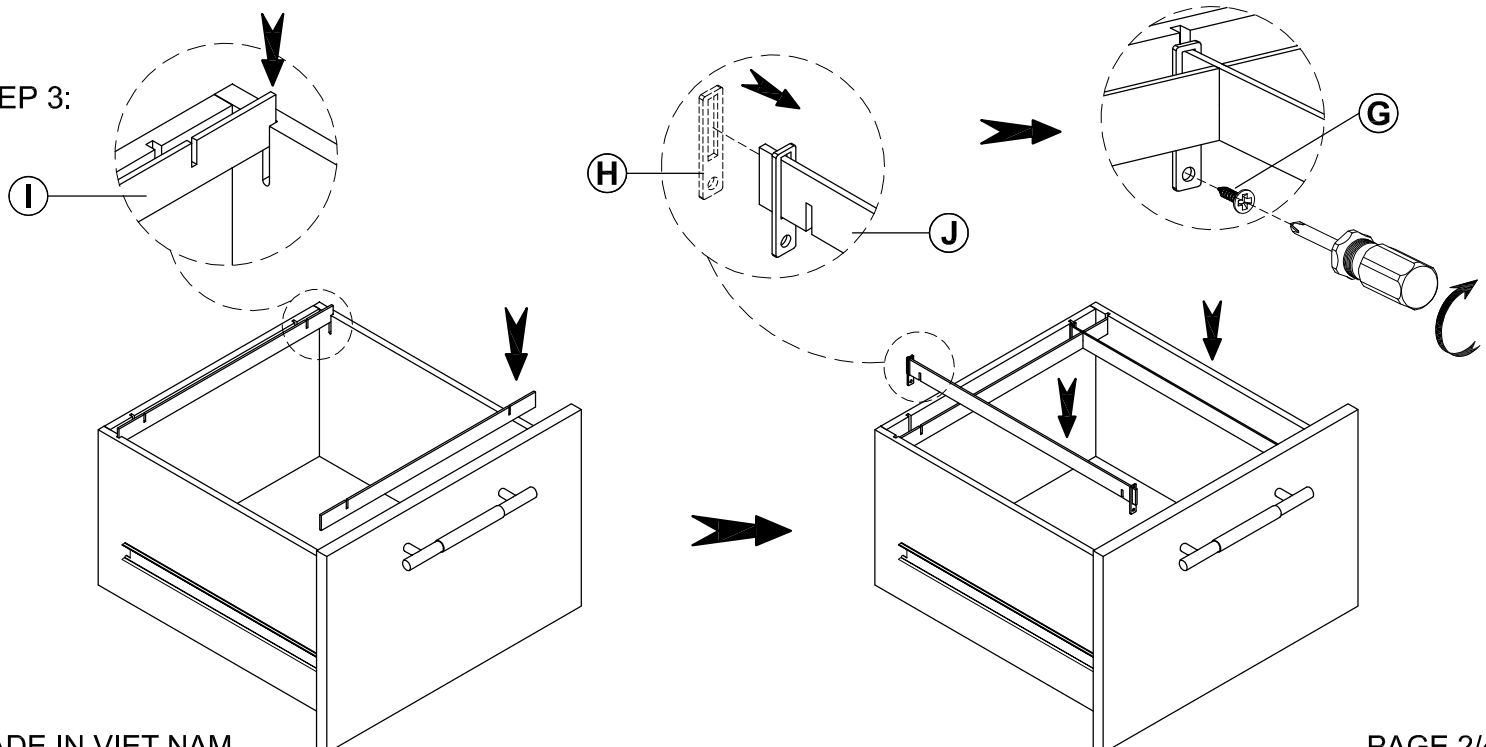
STEP 1:



STEP 2:

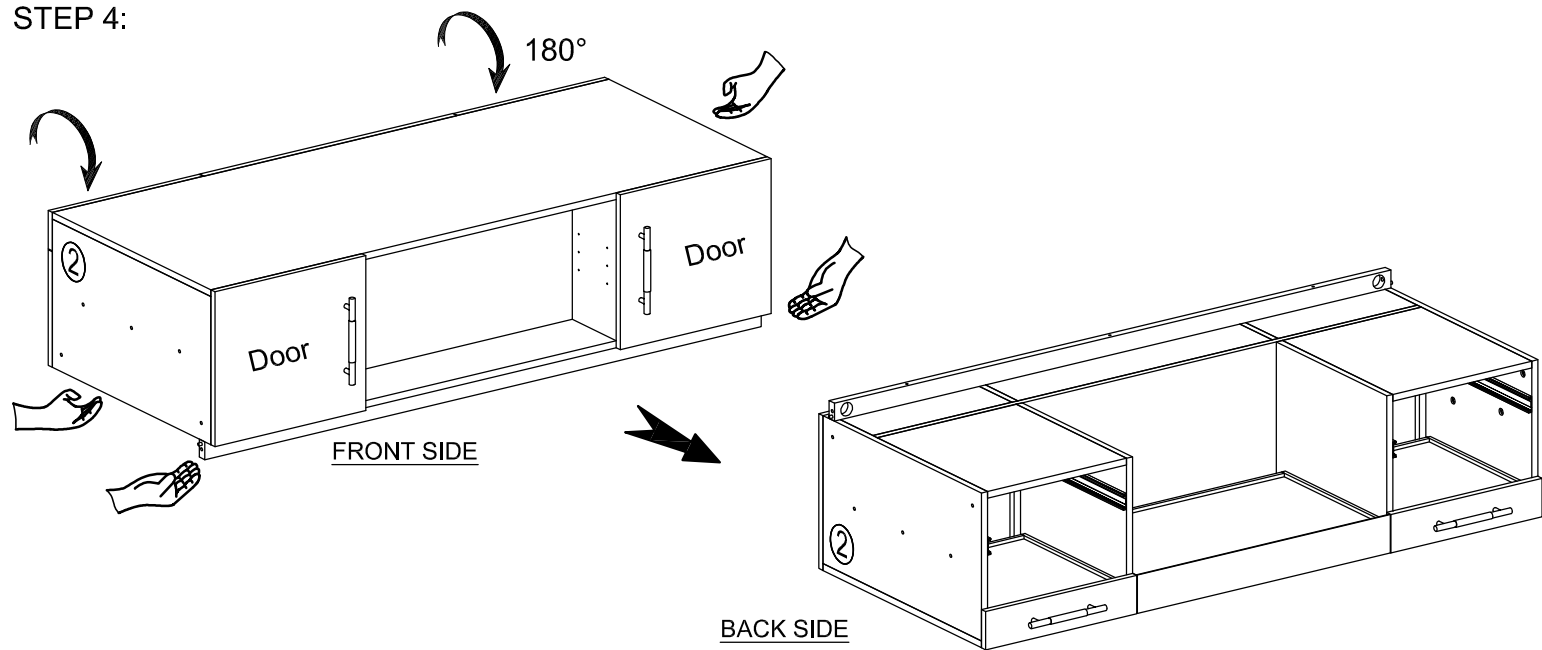


STEP 3:

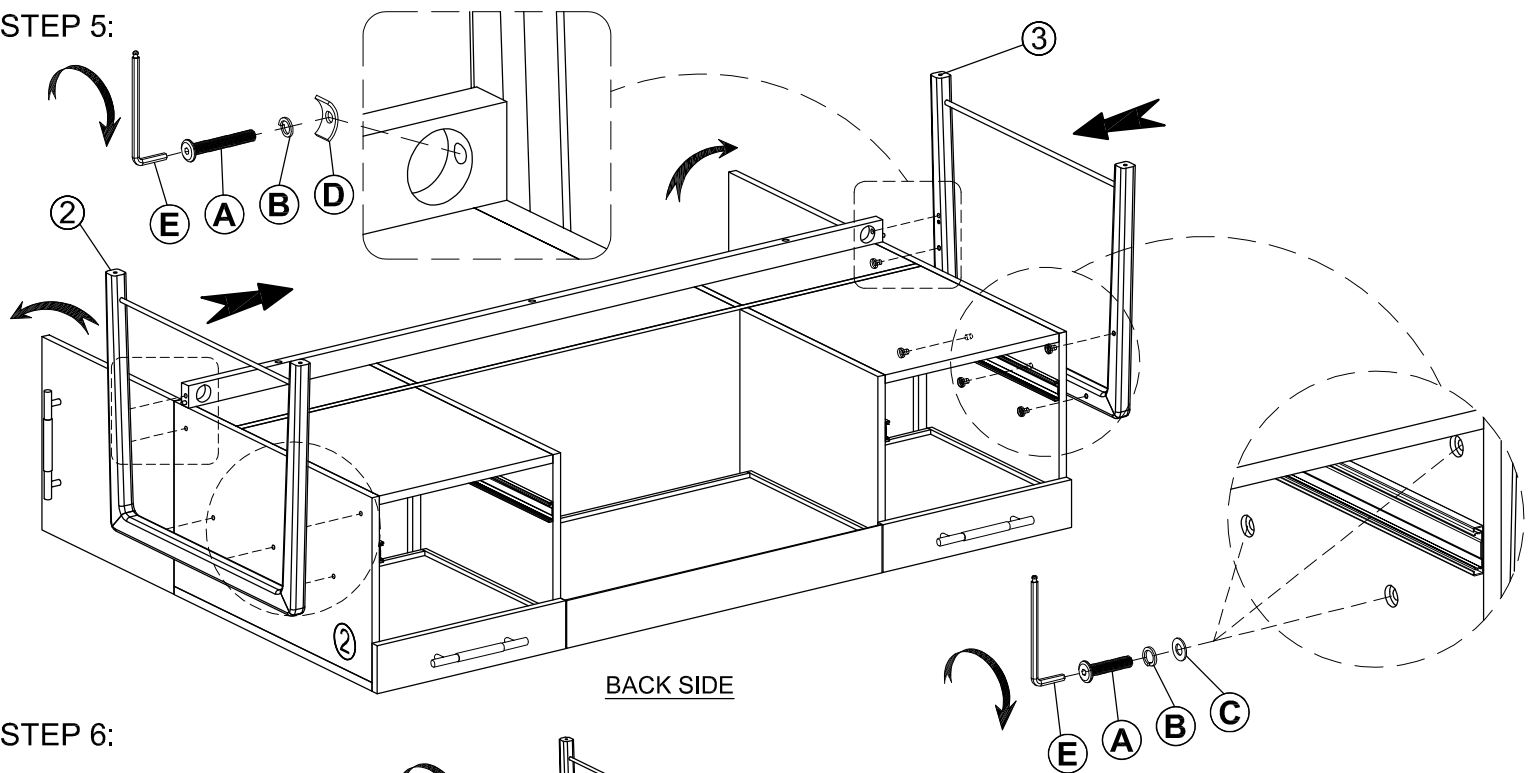


ASSEMBLY INSTRUCTION FOR MODEL: ROSEDALE EXECUTIVE DESK

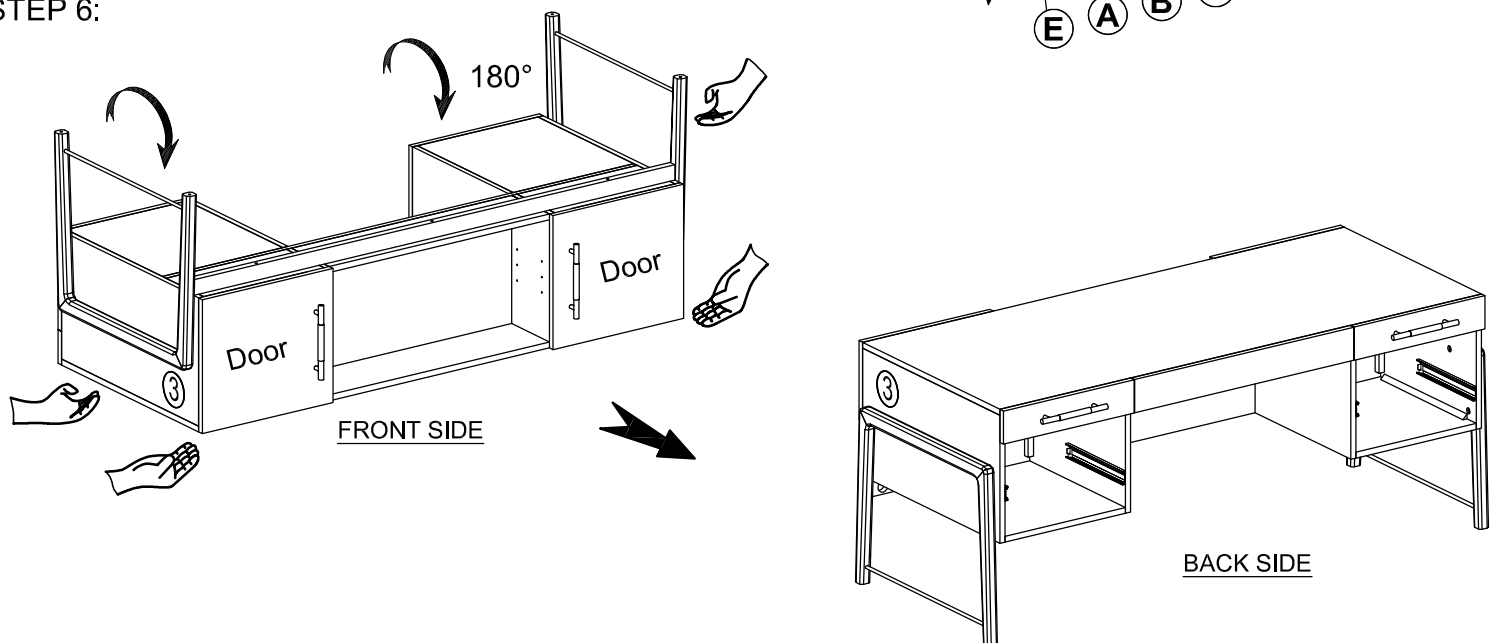
STEP 4:



STEP 5:

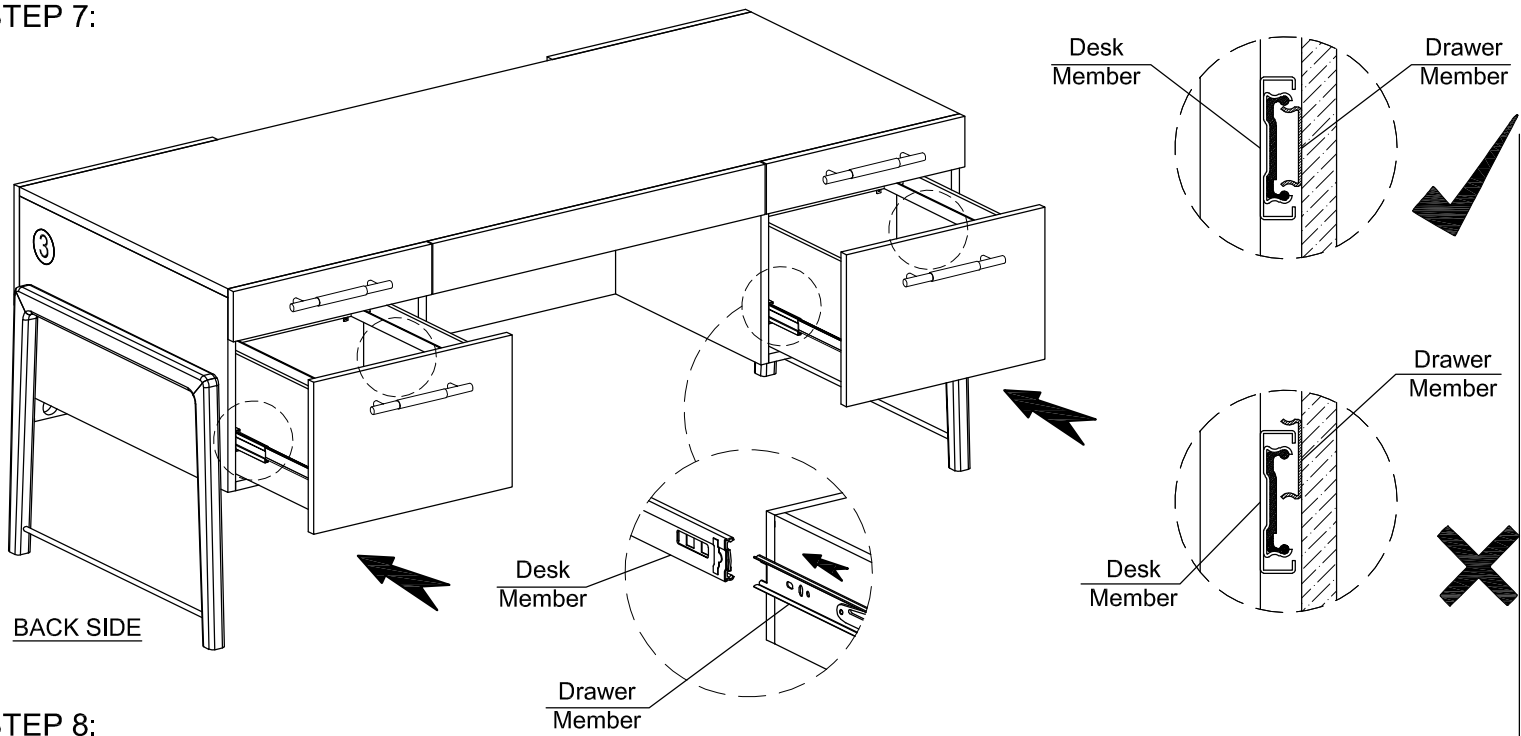


STEP 6:

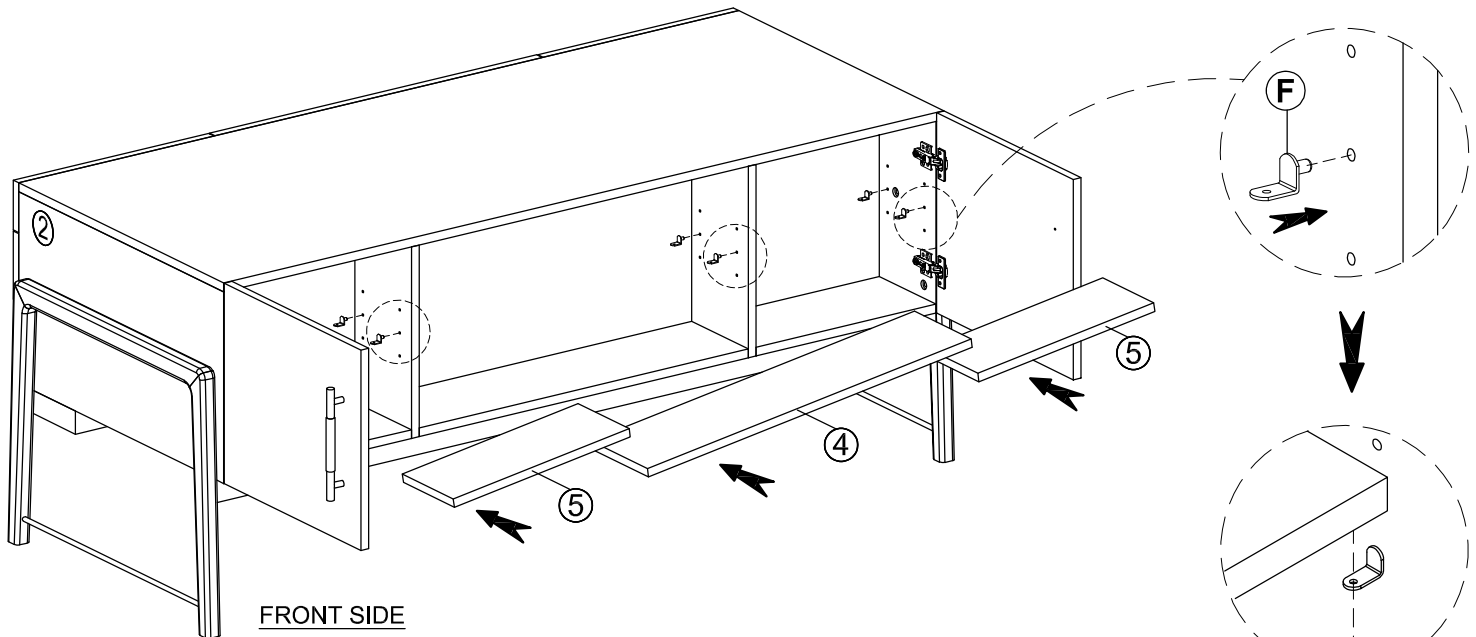


ASSEMBLY INSTRUCTION FOR MODEL: ROSEDALE EXECUTIVE DESK

STEP 7:



STEP 8:



STEP 9:

