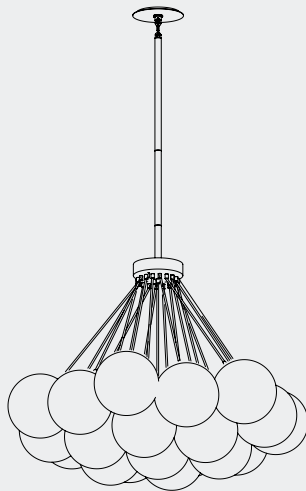


# Installing your **SCHWUNG** Refill kit Cloud

Refill kit

Cloud



2024



Our goal is to bring energy, warmth and pleasure into your personal space. It's great to be here.



Safety instructions	6
------------------------	---

---

Components and features	7
----------------------------	---

---

Assembly instructions	8
--------------------------	---

---

Cleaning and maintenance	14
-----------------------------	----

---

Troubleshooting	15
-----------------	----

# Safety instructions



**We recommend installation  
by a licensed electrician.**

## **Safety instructions**

These instructions are provided for your safety. It is very important that they are read completely before beginning the installation of your fixture.

1. Turn off electricity at the main circuit breaker panel before beginning installation.
2. We highly recommend that the direct wire fixture shall be installed by a certified and licensed electrician. The customer should not attempt to install.
3. This fixture has been rated for up to 19 5W max 12V G4 base bulbs.  
To avoid the risk of fire, do not exceed the recommended wattage.
4. If any special control devices are used with this fixture, follow the instructions to assure full compliance with the N.E.C. requirements.
5. This fixture should only be used with a trailing edge dimmer.
6. Mounting hooks and wall anchors are not included. To select the proper type of mounting hook /wall anchor for your wall/ceiling please contact your local hardware store for assistance. If you have any questions, contact a licensed electrical contractor.

## **Warnings**

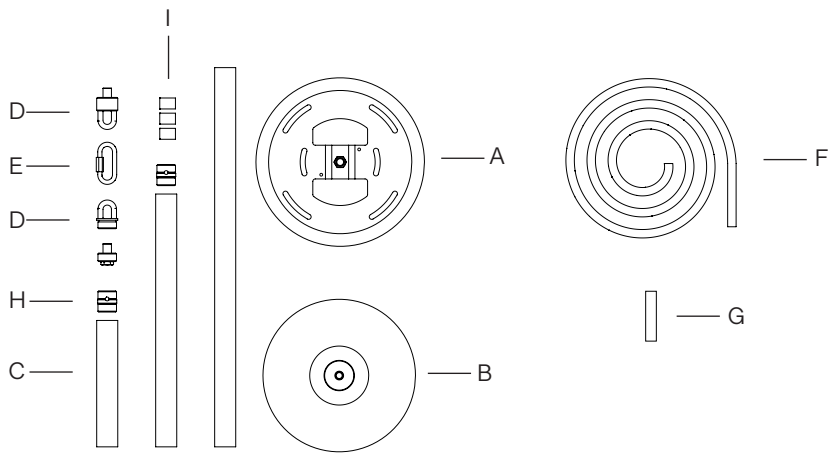
- Do not mount or unmount the glass globes if the fixture or light bulbs are hot.
- All wires are connected. Do not remove the ceiling light from its packaging by pulling on the power cord, as a bad connection may result.
- Do not use if the light cable/cord is damaged.
- To reduce the risk of fire, electrical shock or personal injury, always turn off the light fixture and allow it and the globes to cool prior to replacing light bulb.
- When mounting the fixture, always use the cotton gloves included.
- Do not touch bulb when fixture is turned on. Do not look directly at lit bulb.
- Keep flammable materials away from lit bulb.

# Components and features

## FEATURES

- Hand-crafted in brass
- Mouth-blown glass globes

## COMPONENTS



- A Top/bottom ceiling plate (1x)
- B Flushmount plate (1x)
- C Extension rods (3x)
- D Loop nuts (2x)
- E Quick-link (1x)
- F Wire (1x)
- G Scratch-proof foam covers (19x)
- H M22 nipple for extensions (2x)
- I Electrical connector (3x)

**Tools Enclosed:**  
Pair of cotton gloves

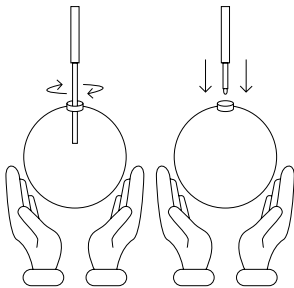
**Not Included**  
(recommended for installation):  
Anchors  
Screws  
Electric drill  
Pencil

# Assembly instructions



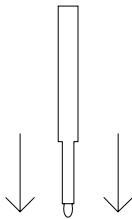
Make sure to cut off the power supply at the main fuse box/circuit breaker before commencing any work.

1



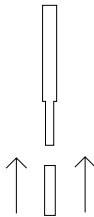
Carefully disassemble each globe by turning it counterclockwise.

2



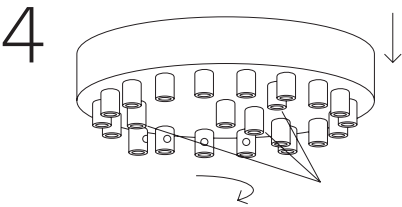
Carefully remove the LED bulbs from each socket.

3

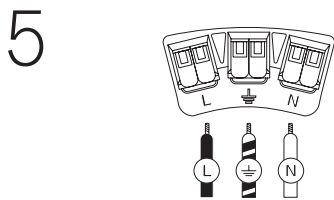


Place the included scratch-proof foam covers (G) on each bulb socket.

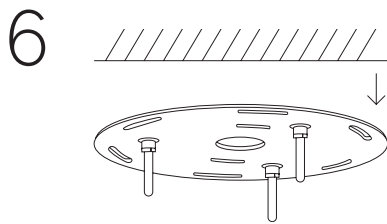




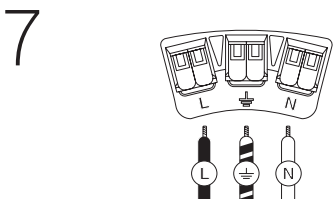
Unfasten the 3 plate nuts and take out the ceiling plate.



Junction boxes may vary depending on location. The diagram on the left shows the most common markings and manner of connecting the cords.  
**NOTE:** We recommend deinstallation by a licensed electrician.

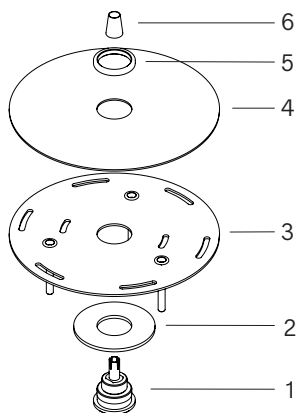


Unfasten the top ceiling plate.



Connect additional cable to the transformer using the electrical connectors into flushmount ceiling plate and pass it through the rod for the next step. The diagram on the left shows the most common markings and manner of connecting the cords.  
**NOTE:** We recommend installation by a licensed electrician.

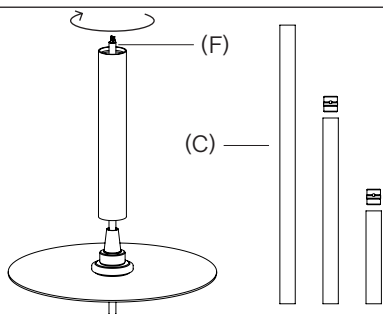
8



Follow the picture to assemble the rod hardware:

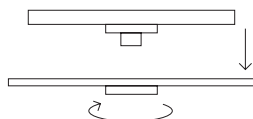
1. Slide the wire from the ceiling plate through the opening in the conical part (1)
2. Place the washer (2) on top of the cone
3. Place the ceiling plate (3) on the washer
4. Place a masking plate (4) on the ceiling plate
5. Turn the retainer ring (5) on the matching thread on the cone to secure all elements
6. Turn the cap (6) on top of the cone to tighten the wiring.

9



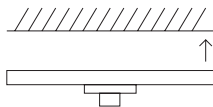
Fasten extension rods (C) and pull the cord (F) through the rods.

10



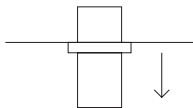
Take out the ceiling plate and unscrew the bottom part by turning the retainer ring [B].

11



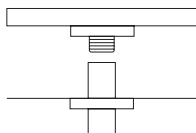
Place the top plate flush against the ceiling, pull electrical cords through the hole and mark anchor spots. Drill holes in the marked spots and place anchors in.  
**NOTE:** Consult your local hardware store for proper anchors.

12



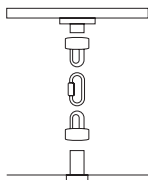
Slide the bottom ceiling plate together with the retainer ring onto the rod of the fixture.

13



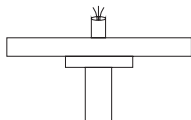
Mount the top ceiling plate onto the rod by screwing it in. Make sure you pull the cord through the middle of the top ceiling plate.

14



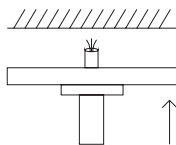
**FLUSH-MOUNT CEILING SET UP**  
If using the vaulted ceiling option, use the included loop nuts (D) and quicklink (E) to connect the rod and the top ceiling plate.

15



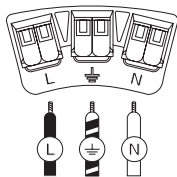
Cut the cord to the right length for installation. Prepare wire endings for electrical connections by stripping isolation. Make sure the endings are not frayed.

16



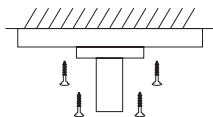
Lift the fixture up to the ceiling and make necessary electrical connections.  
**NOTE: TWO PEOPLE are needed for this and the following steps.**

17



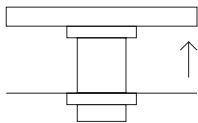
Junction boxes may vary depending on location. The diagram on the left shows the most common markings and manner of connecting the cords.  
**NOTE: We recommend installation by a licensed electrician.**

18



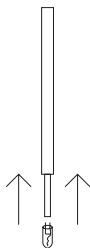
Use the right wall screws to mount the fixture on the ceiling.

19



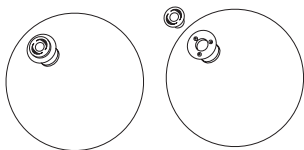
Lift the bottom ceiling plate [B] and use the retainers to secure it in its position.

20



Carefully insert 19 G4 LED bulbs into slots on the tip of each arm.

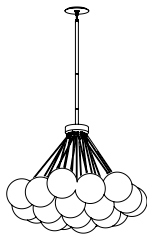
21



Start mounting glass globe.

**NOTE:** Included cotton gloves must be worn when handling glass globes.

22



Restore power and enjoy your Schwung Lamp.

# Cleaning and maintenance



Make sure you cut off power supply to the lamp before commencing cleaning operations.

Components	Maintenance	Tools
Brass Frame	Clean every month using a soft cloth, dampened slightly with water. Make sure the frame is dry before switching the lamp back on.	Soft cloth, water
Glass globes	Clean regularly with a soft dry cloth. Clean only the outside of the globe. If especially dirty, use a wet cloth first. Grease can be removed with a gentle glass cleaner.	Soft cloth, Cotton gloves (!)
Light bulbs	Make sure your power supply is off before changing the bulb. Unscrew the globe where bulb needs replacing. Gently remove the bulb by pulling it out and replace with a LED bulb of the same parameters.	LED bulbs, Cotton gloves (!)

**NOTE:** Please remember, solid brass may tarnish over time. This is a natural process. Make sure you follow our guidelines to preserve the great look of Schwung lighting for years.

# Troubleshooting

Problem	Possible Cause	Action
Tarnishing	Oxidation of brass is a natural process. Although it is lacquered, its color may change slightly over time.	No action is necessary apart from regular cleaning. See the Maintenance section.
Noise	If a humming noise occurs, this is normally caused by transformers.	Check electrical connections and make sure the right dimmer is used - ELV.
Globe deformations	Mouth-formed glass globes are beautiful but not perfect. The process leaves a slight deformation at the bottom of the globe.	No action is necessary. All globes undergo a quality check. Should you have any doubts, please send us a photo of the deformed globe and we will act accordingly.

**NOTE:** Dear client, please be assured our team strives to deliver highest quality products. The handmade nature of the products offers a unique aesthetic experience and allows for small imperfections, which is inherent in crafts. If solutions offered below are not sufficient, please do not hesitate and contact our customer service.

# Having trouble?

We're sorry to hear that.

Our enlightened objects are designed for longevity.

Each piece is made by hand to ensure the highest possible quality and a unique aesthetic experience.

This means you may encounter small surface imperfections. We like to think of them as whispered greetings from our craftspeople. But should you have any concerns about your product and the previous solutions fail to help, please don't hesitate to email us at [info@schwung.design](mailto:info@schwung.design)





