

Checked Earth Tones by Shaina Page

Natural 1.5 Maple • 238350-001

Overview

Warm, tonal hues collaged together. Artist Shaina Page crafts visual interest with fiber work that allows the eye to bounce around. Printed raw canvas with a stringed edge, loose mounted on a linen backer. If not currently in stock, this piece ships within three weeks. Handmade in Austin, Texas.

Details

Overall Dimensions

24.00"w x 1.50"d x 18.00"h

Colors

Natural 1.5 Maple, Fredrix 558 Raw Canvas, White Backer

Materials

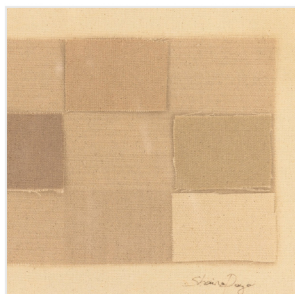
American Maple, Raw Canvas, Linen Backer

Weight

15.00 lb

Volume

1.34 cu ft



This item is made to order in Austin, Texas and will be ready to ship in 2-3 weeks.

As of 12/3/2024