

FOUR HANDS



Amber Lewis x Four Hands

The Fenceline by Lori Marie

1.0 Brimfield Black • 249836-001

Overview

A native of Southern California, landscape painter Lori Marie grew up immersed in nature, frequently camping, traveling to national parks and sketching the peaceful scenery. She draws inspiration from Mother Nature, working with watercolor, oil and acrylic. Handmade in Austin, Texas. A design collaboration by Amber Lewis and Four Hands. This item has limited online distribution and may not be sold on websites without prior approval. Visit the FAQ page in our Help Center for more details.

Details

Overall Dimensions

24.00"w x 1.00"d x 18.00"h

Colors

1.0 Brimfield Black, Fredrix 558 Raw Canvas

Materials

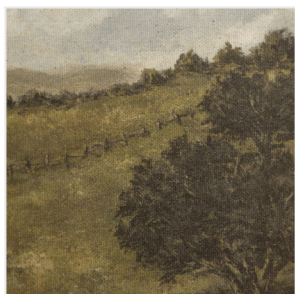
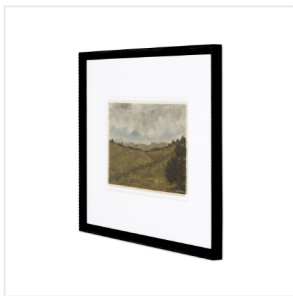
Decorative Weathered Black Pine, Raw Canvas

Weight

15.00 lb

Volume

1.17 cu ft



This item is made to order in Austin, Texas and will be ready to ship in 2-3 weeks.

As of 1/23/2025