



Amber Lewis x Four Hands

# Reflection by Chelsea Fly

Rustic 1.5 Walnut • 250076-003

## Overview

Having grown up in the rural south, painter Chelsea Fly’s works are inspired by the region’s landscapes and skies. Experimental in her methods and mediums, the Tennessean uses art to examine the connection to “place.” Handmade in Austin, Texas. A design collaboration by Amber Lewis and Four Hands. This item has limited online distribution and may not be sold on websites without prior approval. Visit the FAQ page in our Help Center for more details.

## Details

### Overall Dimensions

26.50"w x 1.50"d x 32.00"h

### Colors

Rustic 1.5 Walnut, Fredrix 558 Raw Canvas, BW8-97 Polar White

### Materials

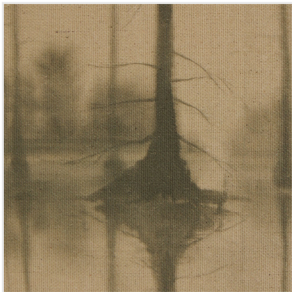
Rustic Walnut, Raw Canvas, BW8-97 Polar White

### Weight

20.00 lb

### Volume

2.33 cu ft



This item is made to order in Austin, Texas and will be ready to ship in 2-3 weeks.

As of 1/23/2025