



Amber Lewis x Four Hands

Canopy by Chelsea Fly

Vertical Grain 2.5 White Oak • 250078-002

\$845

Overview

Having grown up in the rural south, painter Chelsea Fly's works are inspired by the region's landscapes and skies. Experimental in her methods and mediums, the Tennessean uses art to examine the connection to "place." Handmade in Austin, Texas. A design collaboration by Amber Lewis and Four Hands. This item has limited online distribution and may not be sold on websites without prior approval. Visit the FAQ page in our Help Center for more details.

Details

Overall Dimensions

44.00"w x 2.50"d x 48.00"h

Colors

Vertical Grain 2.5 White Oak, Textured Fine Art Paper, BW8-97 Polar White

Materials

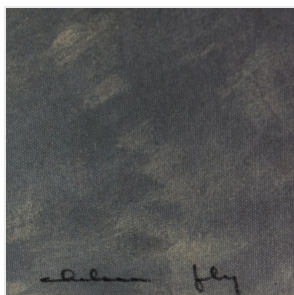
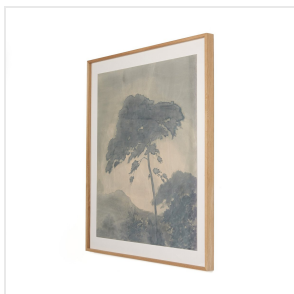
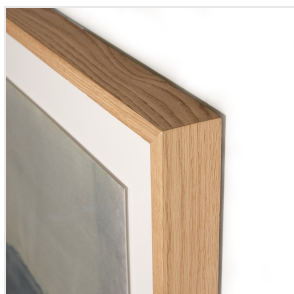
Vertical Grain White Oak, Textured Fine Art Paper, BW8-97 Polar White

Weight

25.00 lb

Volume

6.78 cu ft



Ready for Immediate Shipment: 0

More Arriving Soon: Yes, Early March 2025

As of 1/23/2025