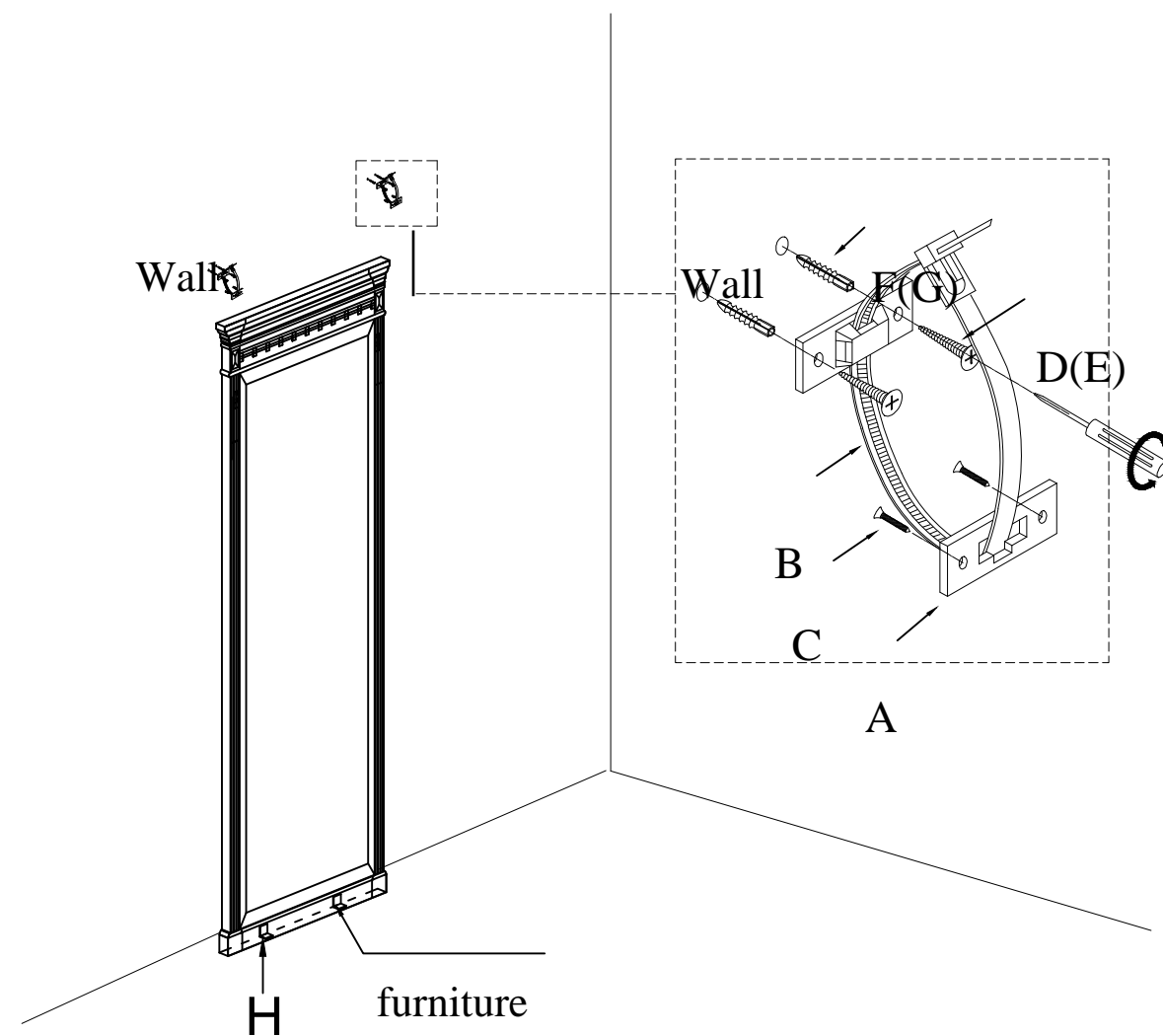


SAFETY BRACKETS INSTRUCTION

Hemlock Floor Mirror

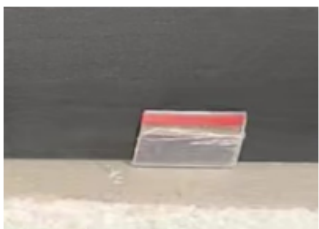
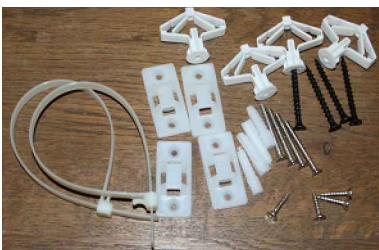


PARTS INCLUDED

A [4] Plastic Bracket
B [2] Restraint Strap
C [4] Short Screw
D [4] Long Screw
E [4] Longer Screw



F [4] Anchor (for concrete wall)
G [4] Anchor (for dry wall)
H [2] L-shaped Foot Pad



ASSEMBLY INSTRUCTIONS

1. Place two of the Plastic Brackets (A) near the top back edge of the furniture, insert the Short Screws (C) and tighten with Screwdriver (not included).
2. According to the wall material, choose the corresponding wall mounting hardware, then drill two holes in the wall and insert the Anchors (F/G), attach the second set of Plastic Brackets (A) by inserting the Screws (D/E):

Concrete wall	Wall anchor F		4pcs.	Long Screw D		4pcs.
Dry wall	Wall anchor G		4pcs.	Longer screw E		4pcs.
Wood wall				Long Screw D		4pcs.

3. Lace one end of the Restraint Straps (B) down through each Plastic Bracket (A), bring both ends together and slide the beaded end until its snap locks into the keyhole slot as shown in the sketch.

When properly installed, this restraint will provide protection against tipping of furniture. This tipping restraint **MUST** be secured to a wall-stud or wall structure of similar strength.