







ASSEMBLY INSTRUCTIONS

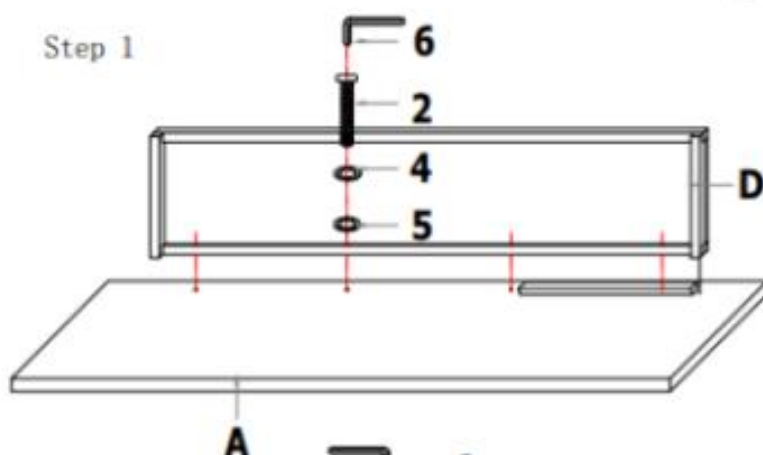
Carlton Desk

PART LIST		
NO	DESCRIPTION	QTY
A	Top	1pc
B	Left Leg	1pcs
C	Right Leg	1pcs
D	Back Panel	1pcs
E	Drawer Box	1pcs

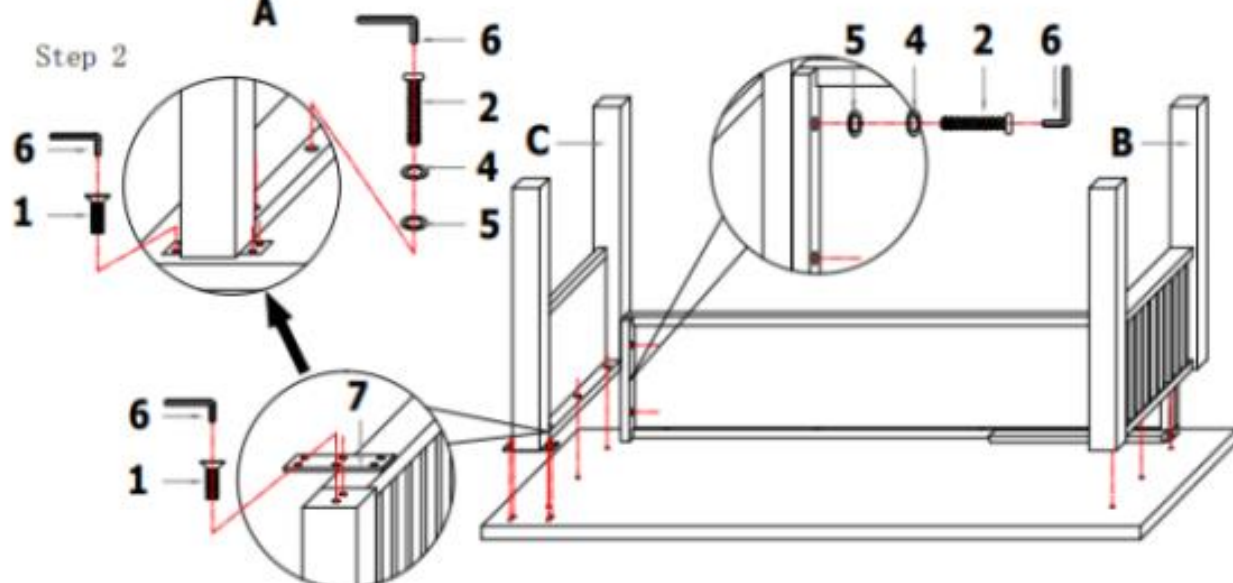
HARDWARE LIST		
NO	DESCRIPTION	QTY
1	 Bolt M8x20	6pcs
2	 Bolt M8x40	18pcs
3	 Bolt M8x60	2pcs
4	 Spring Washer 8x12	20pcs
5	 Flat Washer 8x16	20pcs
6	 Allen Key 5#	1pc
7	 Metal Plate	1pc

Assembly Steps

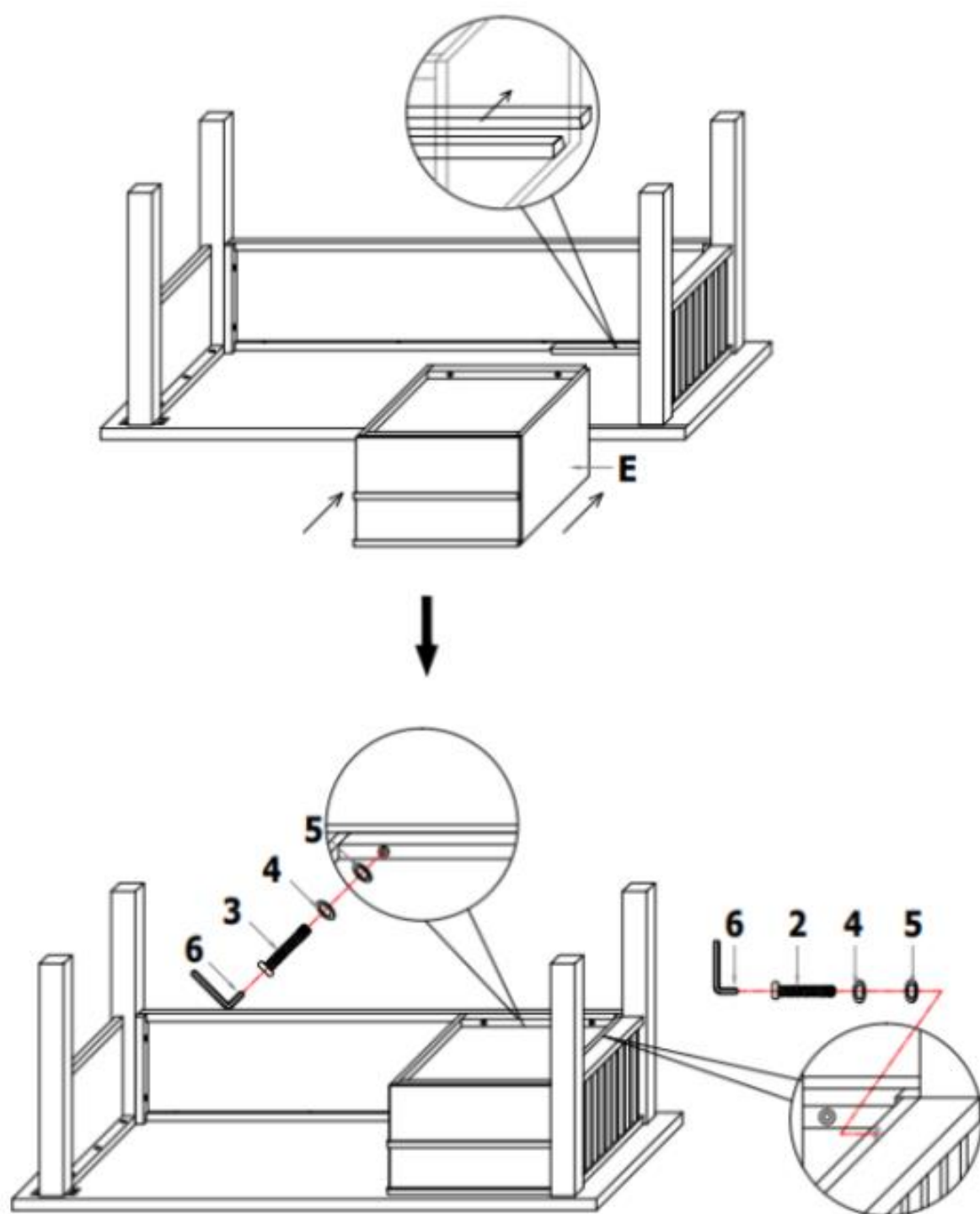
Step 1



Step 2



Step 3



Adjusting Floor Levelers

Your furniture has been expertly crafted and pre-adjusted by professionals. However, slight shifts can occur during transportation. If you notice that the doors are not perfectly aligned or the furniture wobbles, a quick adjustment can help ensure stability and a seamless look.

Adjust the Floor Levelers

Check for Stability – Place the furniture in its final position on a level surface. If it wobbles or doesn't sit evenly, the floor levelers need adjusting.

Locate the Levelers – These are small adjustable feet found at the bottom corners of your furniture.

Adjust as Needed – Using your hand or a wrench, turn the levelers clockwise to raise or counterclockwise to lower the furniture. Make small adjustments and check stability after each turn.



If you need further adjustments, repeat the process in small increments.