



Amber Lewis x Four Hands

Breton Out door Chaise

Alessi Linen • 25 1181-001

Overview

A mix of traditional shaping and textural elements bring character to this outdoor chaise. Cast aluminum frames a basket-woven seatback and upholstered seat, finished by turned detailing. A design collaboration by Amber Lewis and Four Hands. This item has limited online distribution and may not be sold on websites without prior approval. Visit the FAQ page in our Help Center for more details.

Details

Overall Dimensions

29.50"w x 78.75"d x 16.00"h

Colors

Alessi Linen, Bronze, Textured Natural

Materials

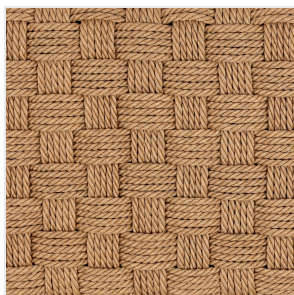
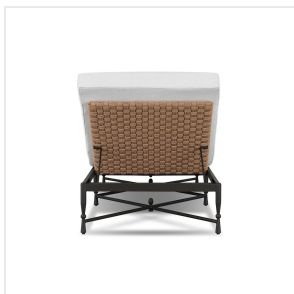
100% Polypropylene, Aluminum, 100% Polyethylene

Weight

56.00 lb

Volume

33.02 cu ft



Ready for Immediate Shipment: 0

More Arriving Soon: Yes, 25 arriving in Early March.

As of 10/25/2025