



Amber Lewis x Four Hands

Rowan Out door Ottoman-48"

Alessi Linen • 251182-001

Overview

A fresh take on traditional woven styles, faux banana leaf weaves a bold, chunky pattern into this outdoor ottoman, accented by a distinctive braided detail for an extra layer of visual intrigue. Finished with a thick upholstered top. A design collaboration by Amber Lewis and Four Hands.

Details

Overall Dimensions

48.75"w x 48.75"d x 16.00"h

Colors

Alessi Linen, Coastal Weave

Materials

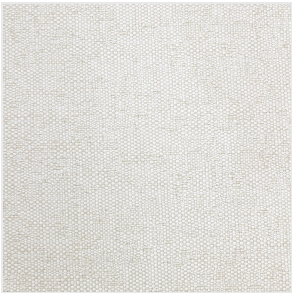
100% Polypropylene, 100% Polyethylene

Weight

37.04 lb

Volume

28.71 cu ft



Ready for Immediate Shipment: 0
More Arriving Soon: Yes, 23 arriving in Late December.
As of 10/25/2025