



Amber Lewis x Four Hands

# Rowan Out door Ott oman-18 "

Alessi Linen • 25 1183-00 1

## Overview

A fresh take on traditional woven styles, faux banana leaf weaves a bold, chunky pattern into this outdoor ottoman, accented by a distinctive braided detail for an extra layer of visual intrigue. Finished with a thick upholstered top. A design collaboration by Amber Lewis and Four Hands. This item has limited online distribution and may not be sold on websites without prior approval. Visit the FAQ page in our Help Center for more details.

## Details

### Overall Dimensions

18.75"w x 18.75"d x 16.00"h

### Colors

Alessi Linen, Coastal Weave

### Materials

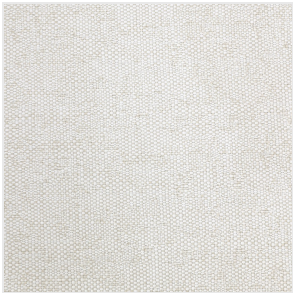
100 % Polypropylene, 100 % Polyethylene

### Weight

10.40 lb

### Volume

4.94 cu ft



Ready for Immediate Shipment: 0  
More Arriving Soon: Yes, 23 arriving in Late December.  
As of 10/25/2025