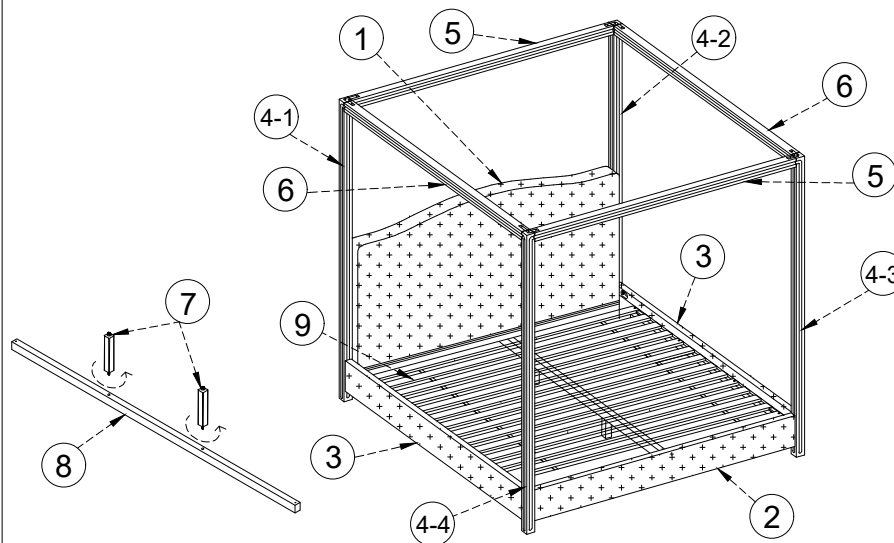
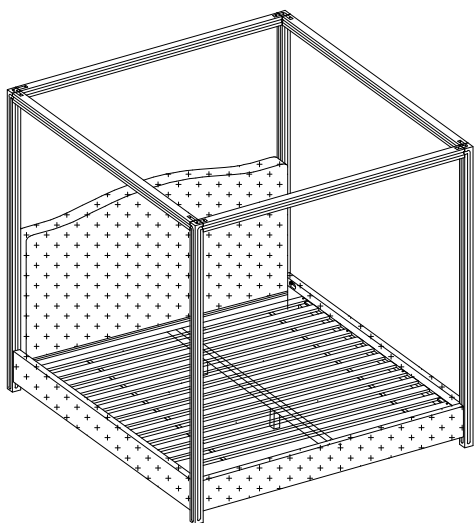


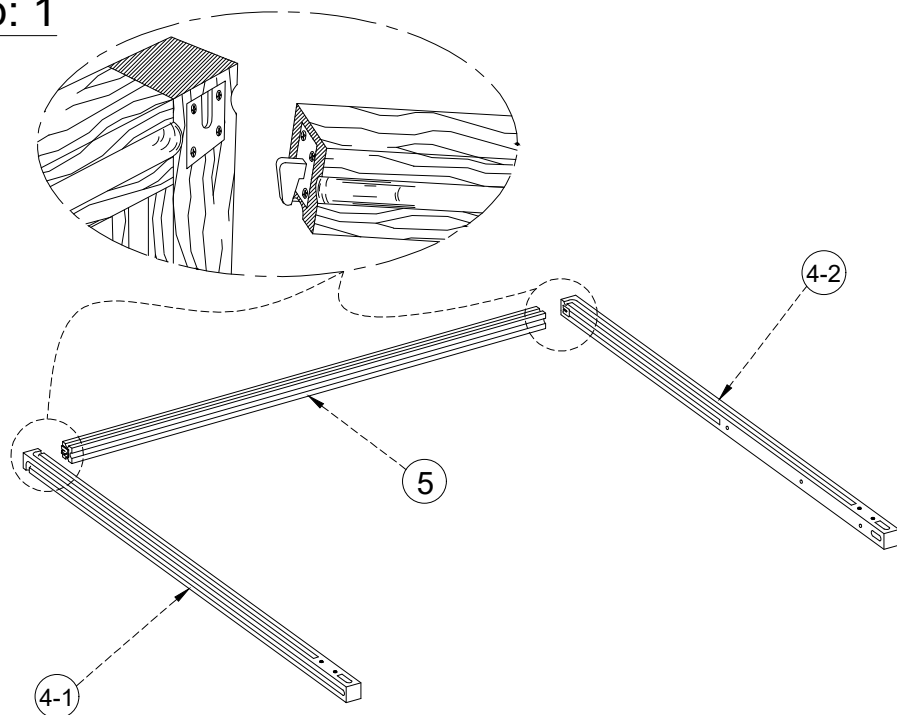
ASSEMBLY INSTRUCTION

JODIE CANOPY BED QUEEN

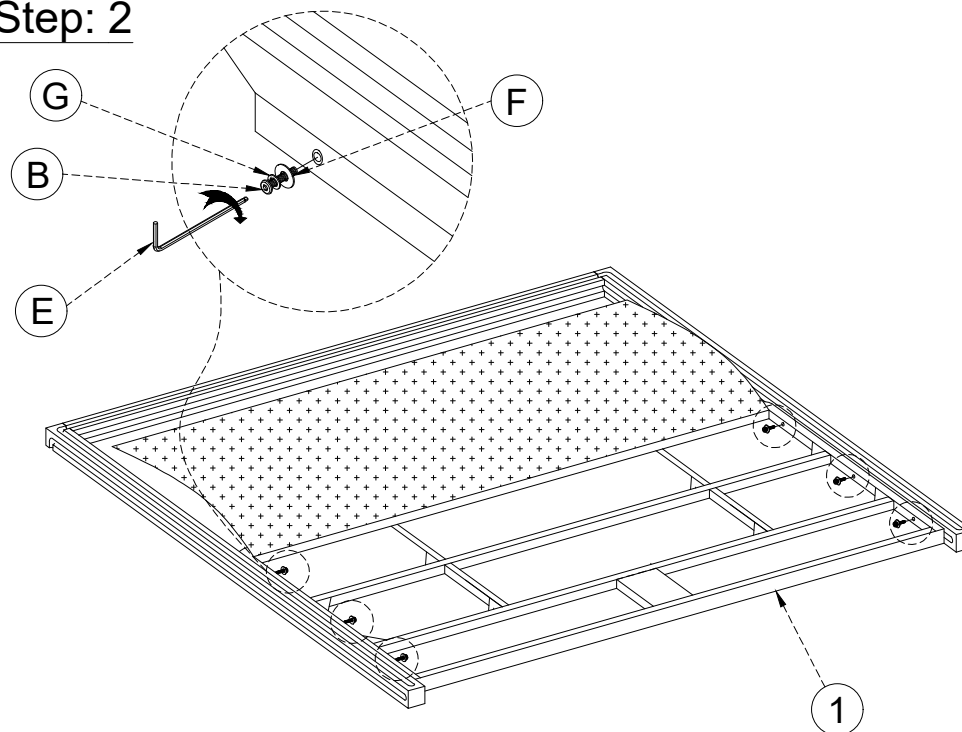


Name of Hardware			Qty
A		Bolts M8x80	12
B		Bolts M8x70	6
C		Bolts M6x15	12
D		Bracket	4
E		Allen Key M4	1
F		Flat Washer M8	4
G		Lock Washer M8	16
H		Curved Washers	12
I		Screw M4x60	2
J		Screw M4x30	8
K		Nuts M8	12
L		Short Screw K13	1

Step: 1

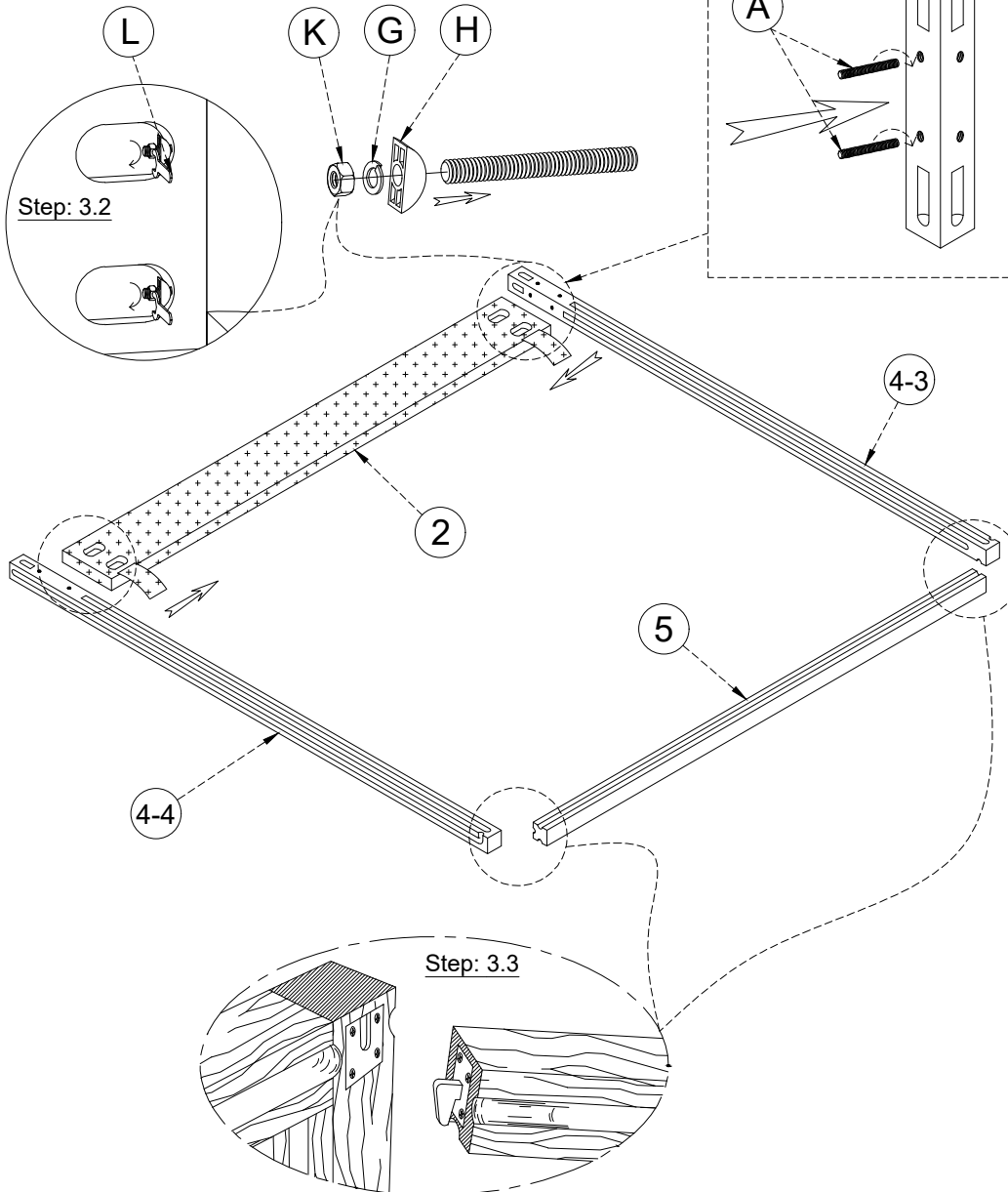


Step: 2

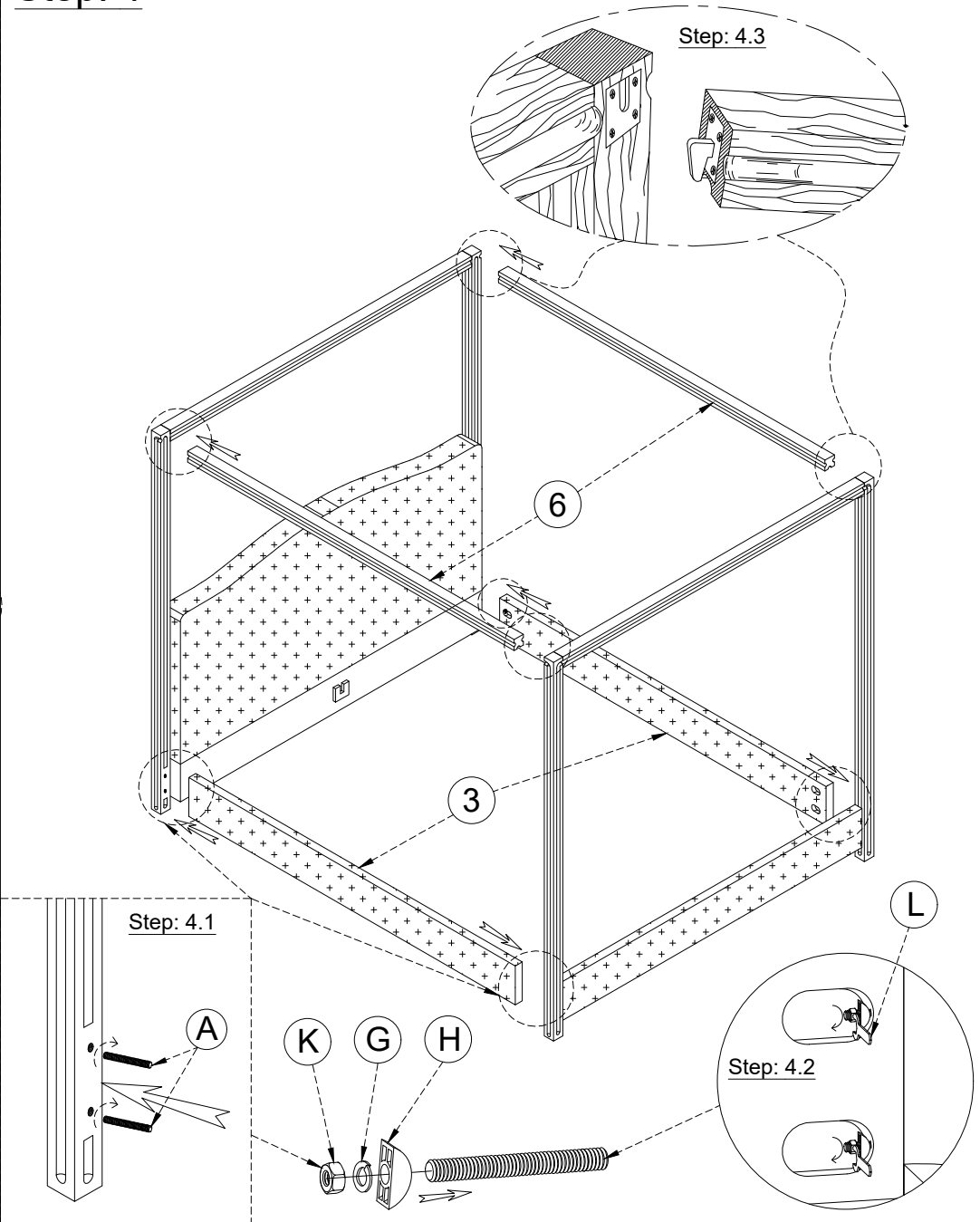


ASSEMBLY INSTRUCTION JODIE CANOPY BED QUEEN

Step: 3



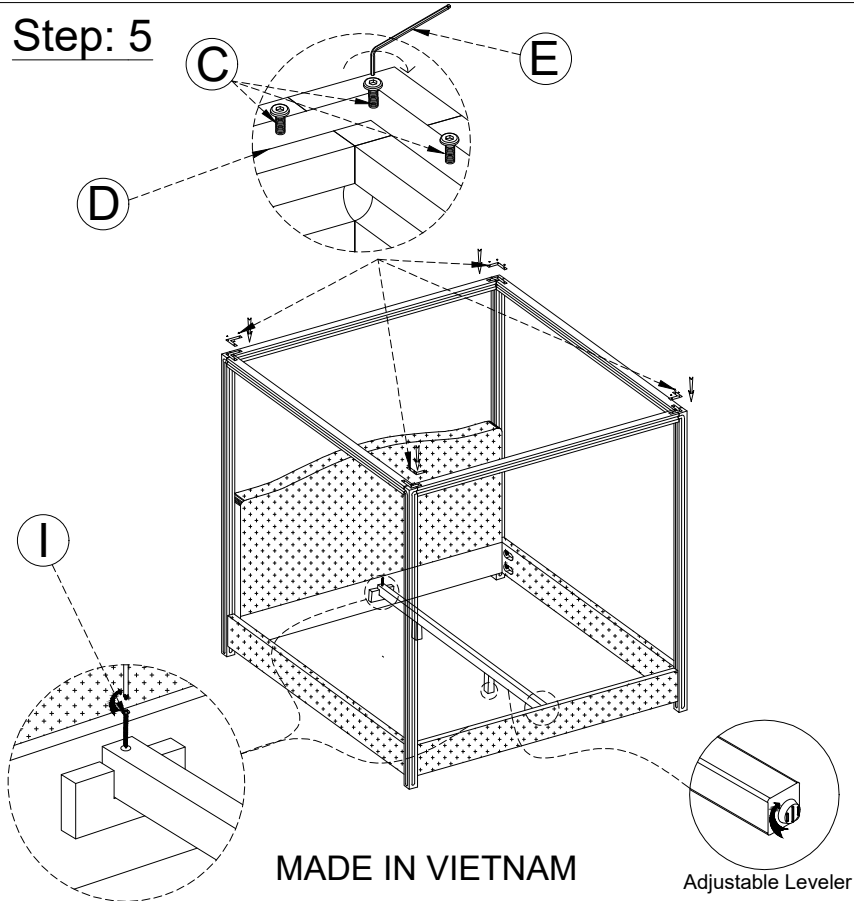
Step: 4



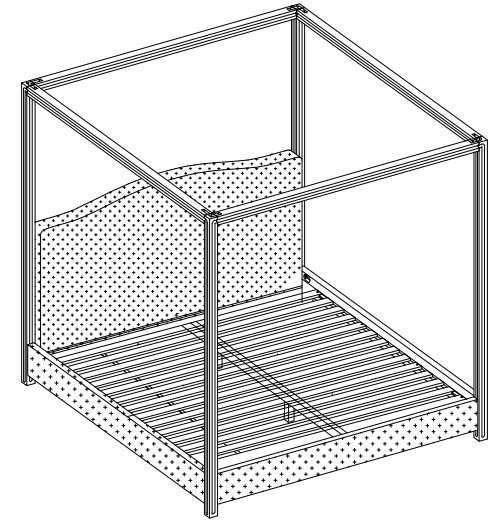
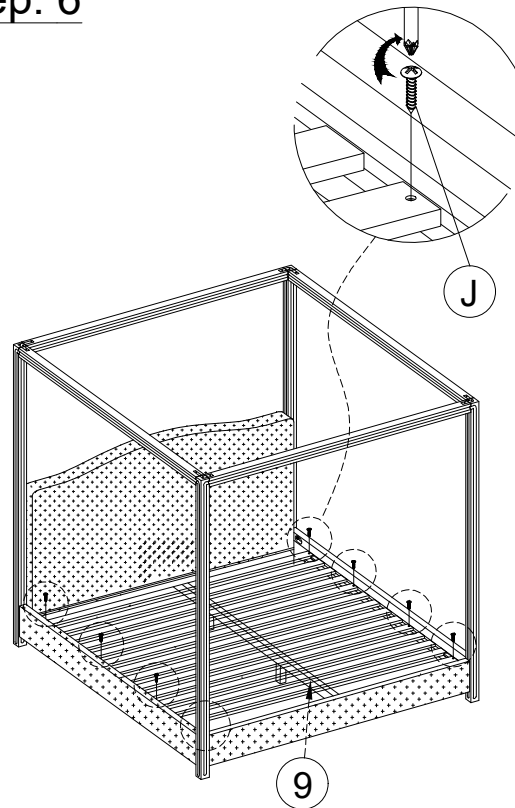
ASSEMBLY INSTRUCTION

JODIE CANOPY BED QUEEN

Step: 5



Step: 6



FINISH

Adjusting Floor Levelers

Your furniture has been expertly crafted and pre-adjusted by professionals. However, slight shifts can occur during transportation. If you notice that the doors are not perfectly aligned or the furniture wobbles, a quick adjustment can help ensure stability and a seamless look.

Adjust the Floor Levelers

Check for Stability - Place the furniture in its final position on a level surface. If it wobbles or doesn't sit evenly, the floor levelers need adjusting.

Locate the Levelers - These are small adjustable feet found at the bottom corners of your furniture.

Adjust as Needed - Using your hand or a wrench, turn the levelers clockwise to raise or counterclockwise to lower the furniture. Make small adjustments and check stability after each turn.