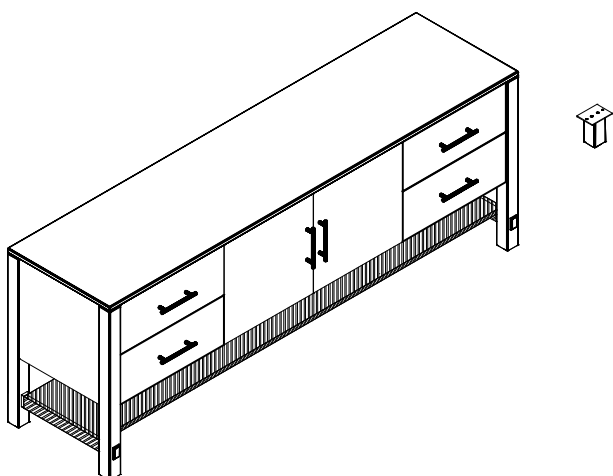
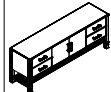





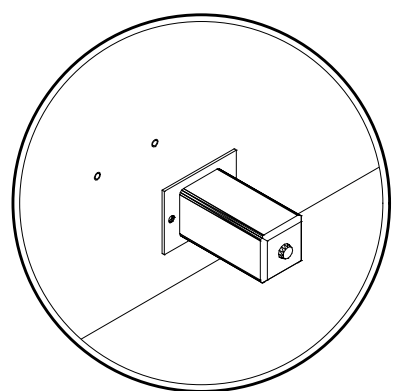
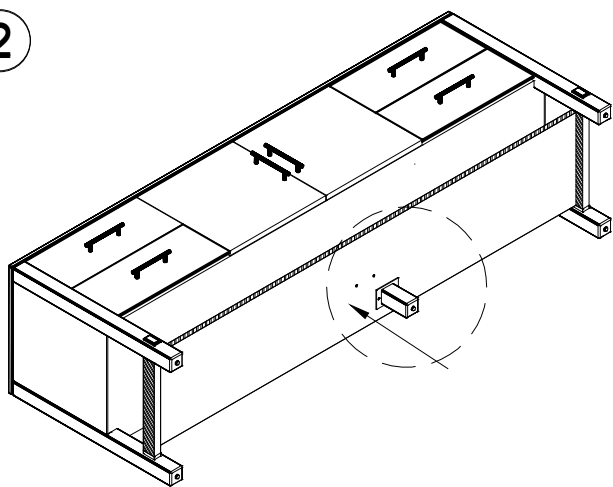
Assembly Instruction For Blake Media Console

1

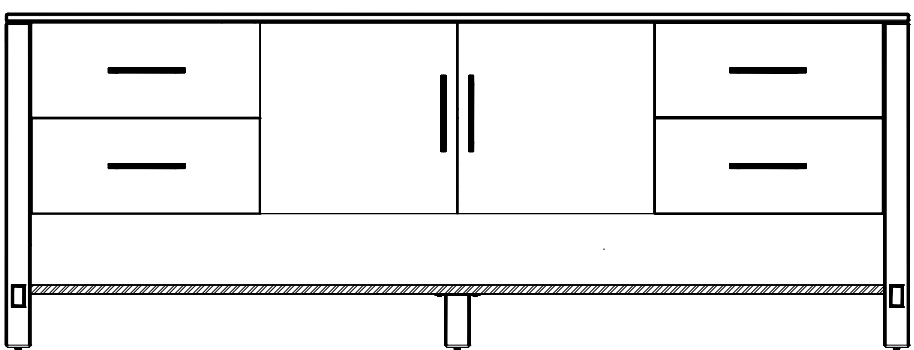
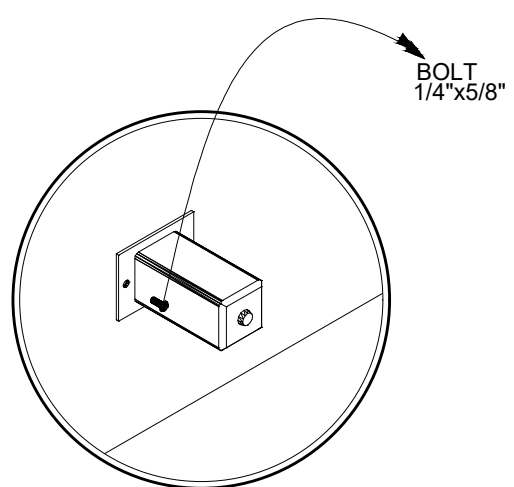
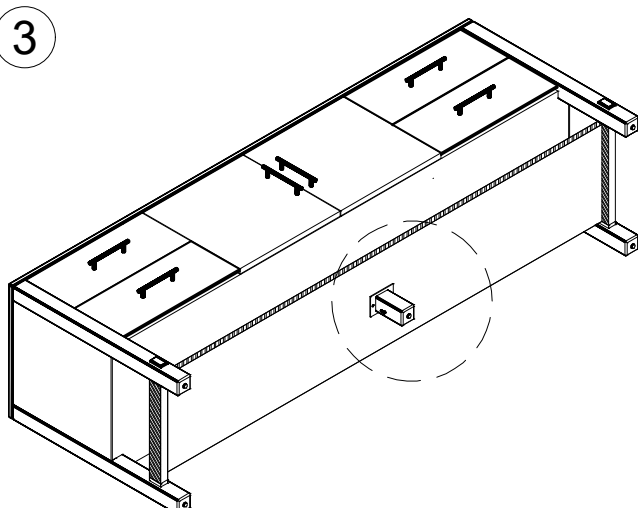


Hardware List				
A		Case		1
B		Leg		1
C		Bolt	1/4"x5/8"	2
D		Allen Wrench	5/32"	1

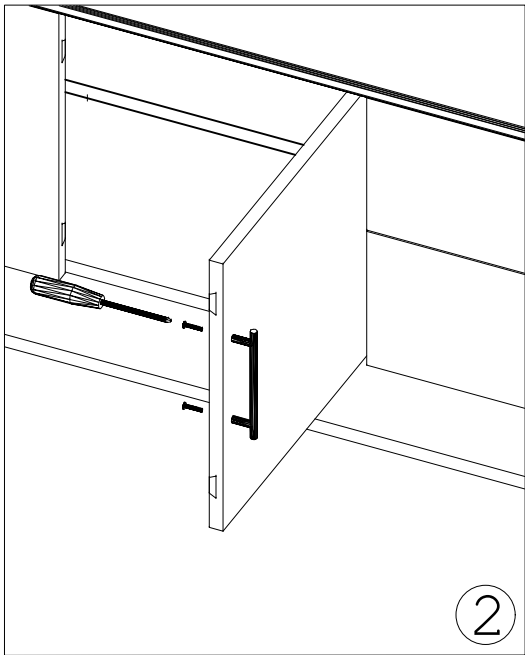
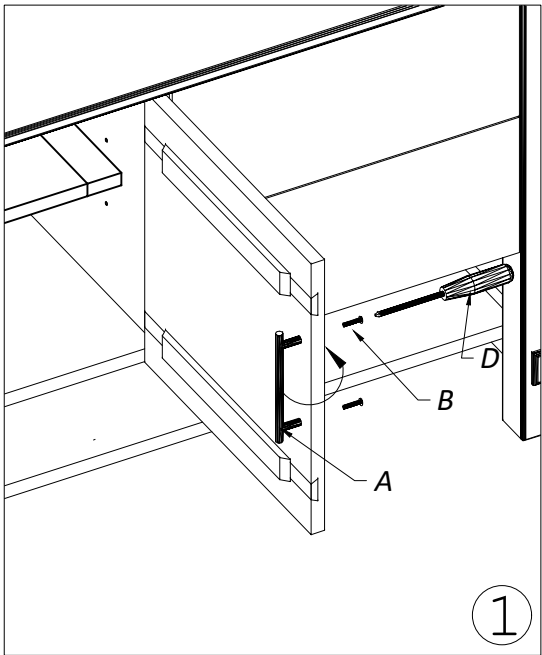
2



3

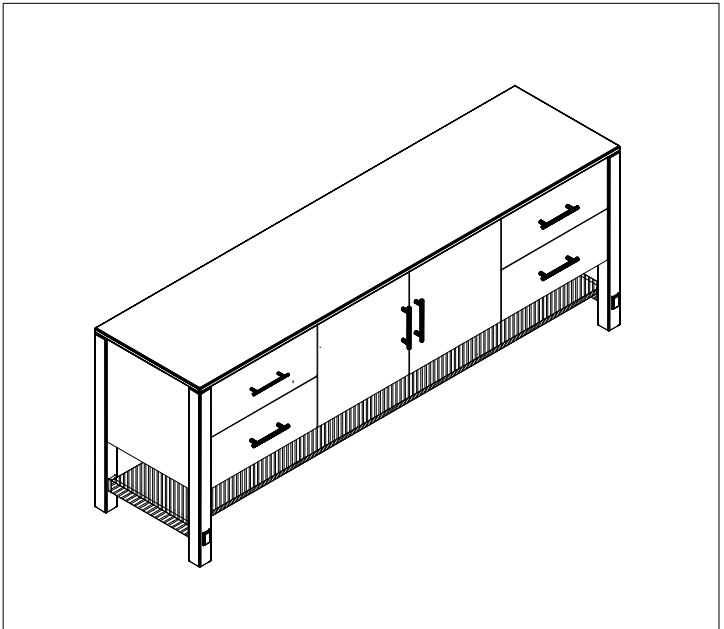
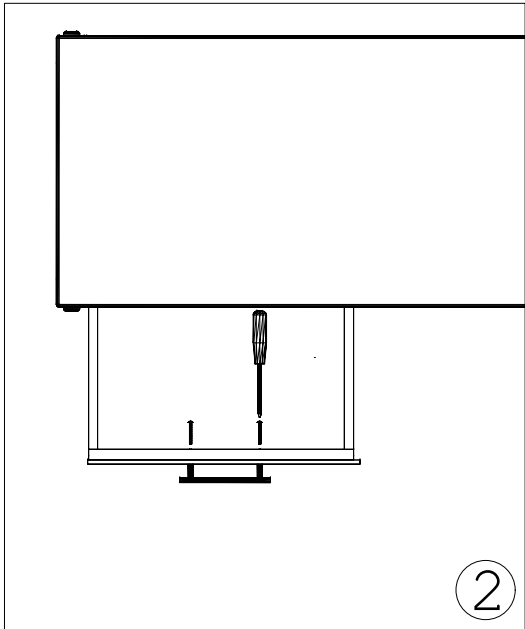
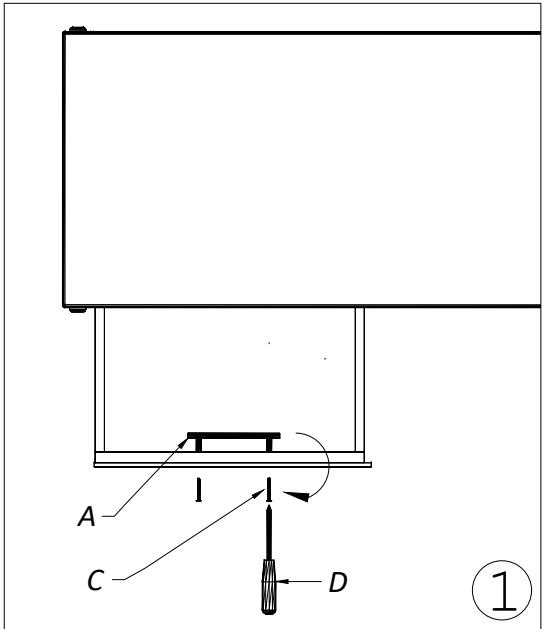


BLAKE DOOR PULL ASSEMBLY INSTRUCTIONS



PARTS LIST	
A	IRON PULL
B	SCREW 3/16"x1"
C	SCREW 3/16"x1.5"
TOOL REQUIRED	
D	PHILLIPS SCREW DRIVER NOT INCLUDED
NOTE: IRON PULL IS PRE ASSEMBLED	

BLAKE DRAWER PULL ASSEMBLY INSTRUCTIONS

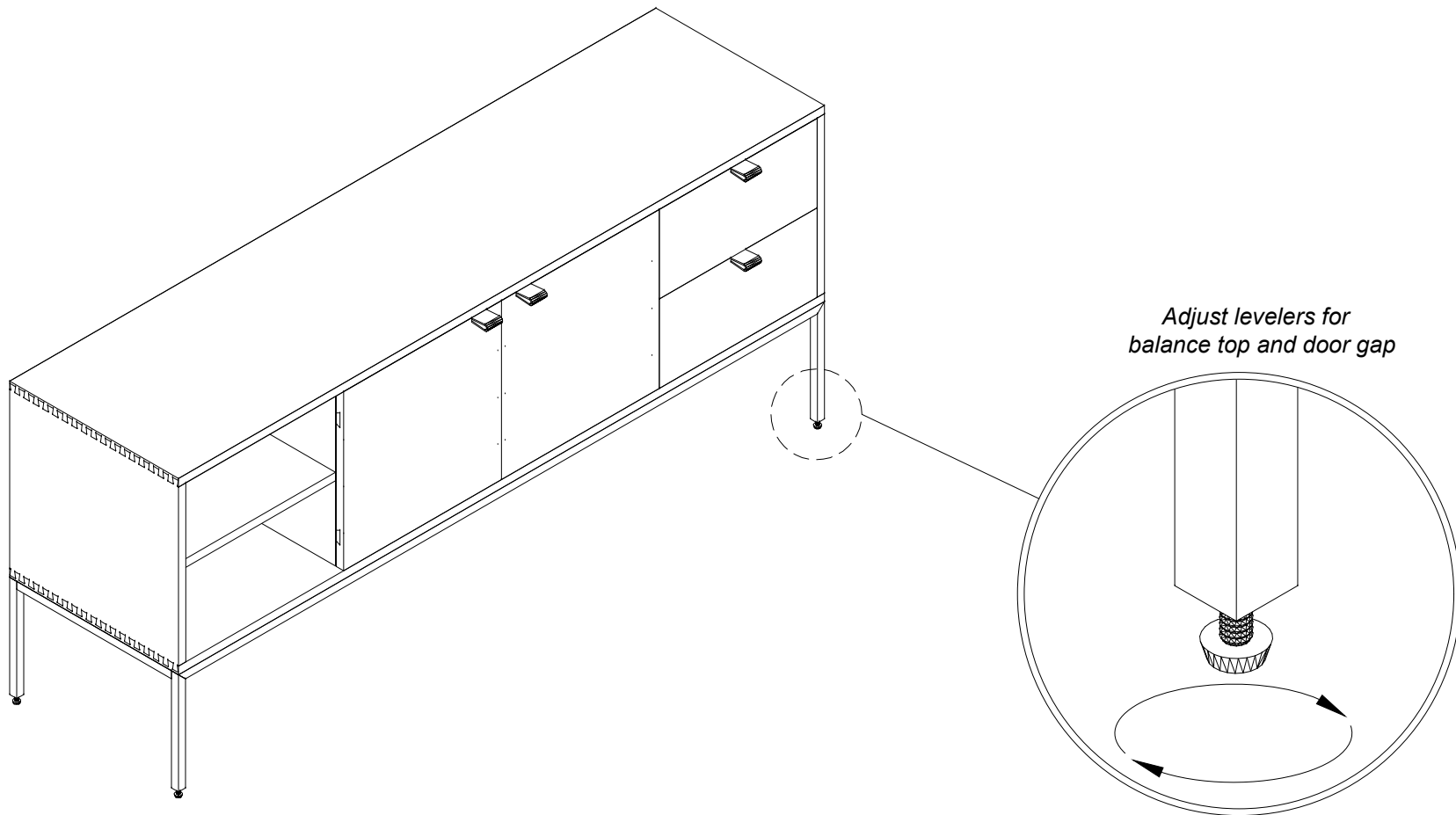


Adjusting Floor Levelers

Your furniture has been expertly crafted and pre-adjusted by professionals. However, slight shifts can occur during transportation. If you notice that the doors are not perfectly aligned or the furniture wobbles, a quick adjustment can help ensure stability and a seamless look.

Step 1: Adjust the Floor Levelers

- **Check for Stability-** *Place the furniture in its final position on a level surface. If it wobbles or doesn't sit evenly, the floor levelers need adjusting.*
- **Locate the Levelers-** *These are small adjustable feet found at the bottom corners of your furniture.*
- **Adjust as Needed-** *Using your hand or a wrench, turn the levelers clockwise to raise or counterclockwise to lower the furniture. Make small adjustments and check stability after each turn.*



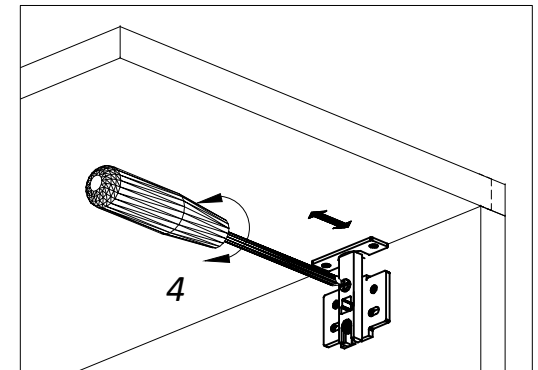
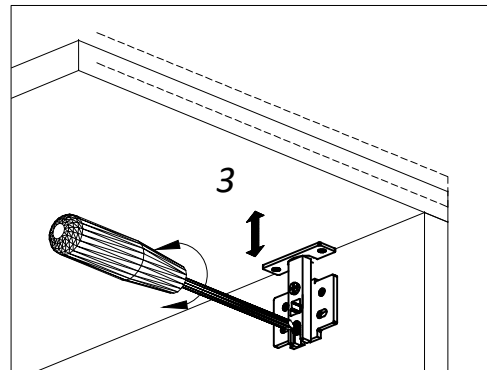
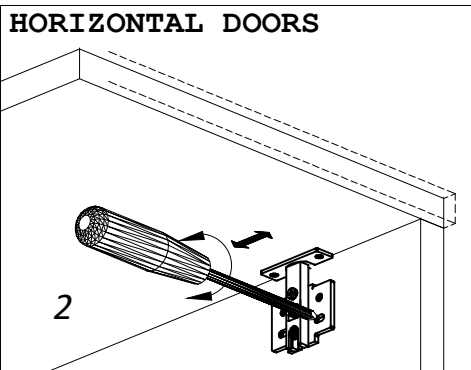
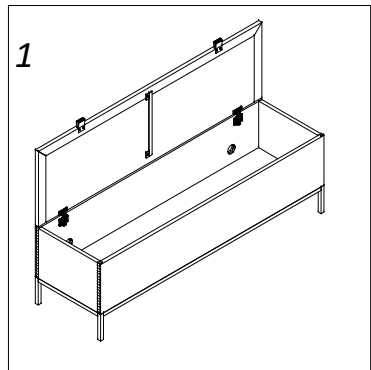
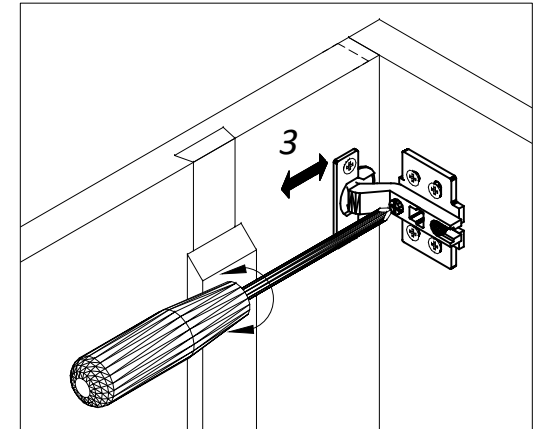
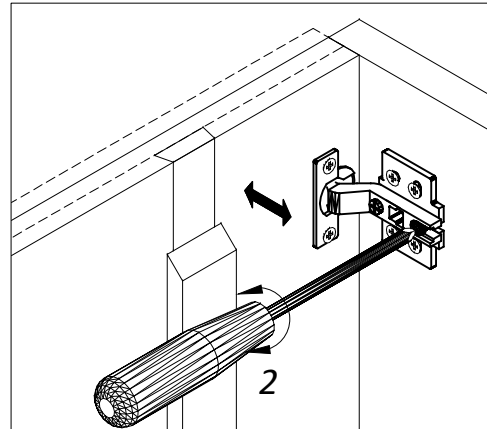
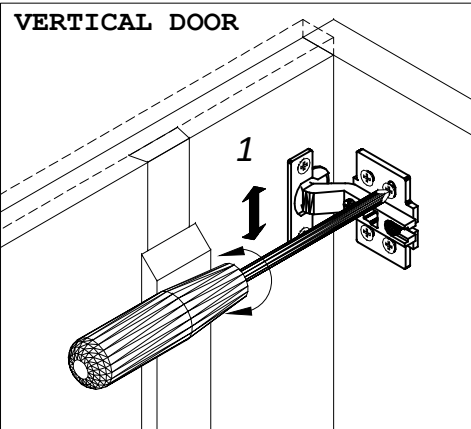
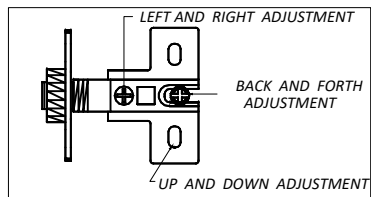
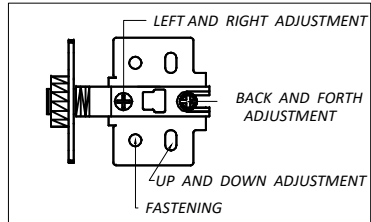
Adjusting Hinges

Your furniture has been expertly crafted and pre-adjusted by professionals. However, slight shifts can occur during transportation. If you notice that the doors are not perfectly aligned or the furniture wobbles, a quick adjustment can help ensure stability and a seamless look.

ADJUST THE HINGES (IF NECESSARY)

NOTE: OBSERVE WHICH TYPE OF HINGE MATCHES THE DIAGRAM FOR ADJUSTMENT.

- 1. Up and Down Adjustment:** To move the cabinet door higher or lower.
- 2. Left and Right Adjustment:** To shift the cabinet door sideways for alignment.
- 3. Back and Forth Adjustment:** To move the cabinet door closer to or farther from the cabinet frame.



TIPS FOR ADJUSTMENT:

These "adjustments" are not preset and will need to be checked to meet the desired look.

- * We recommend the use of a #2 Phillips Screwdriver.
- * Adjust in small steps and check your progress frequently.
- * Use a measuring tape to ensure the gaps between the top and bottom of the door are even.
- * Avoid forcing the door closed if it does not align properly, as this may damage the door.
- * If the alignment is still off, make further adjustment as needed.

By following these steps, you can achieve a balanced door alignment.