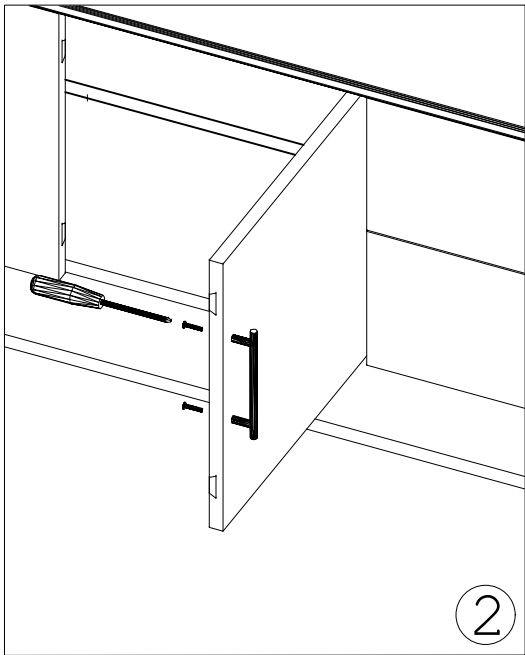
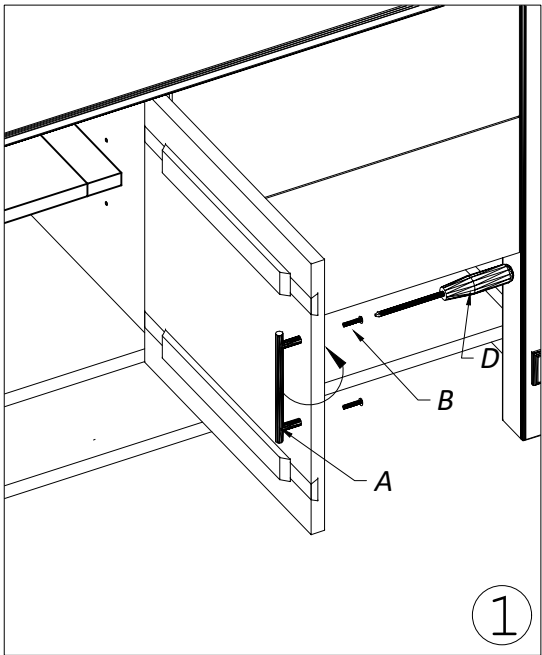
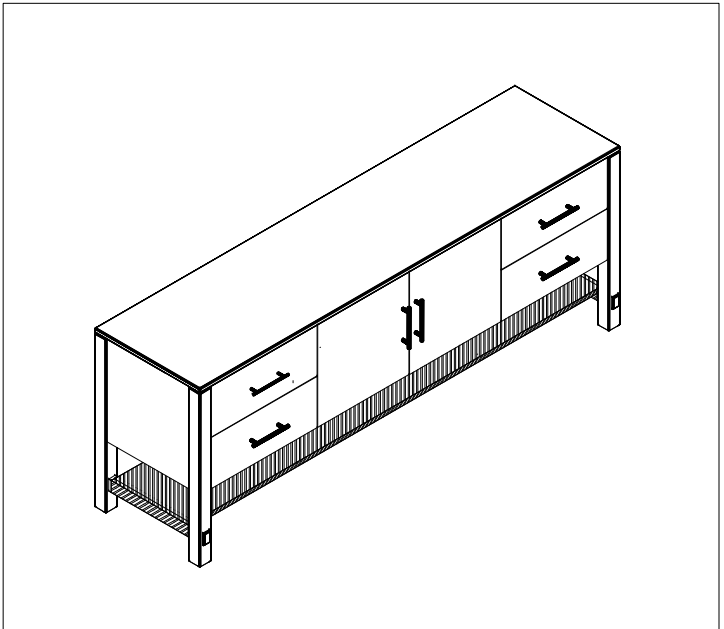
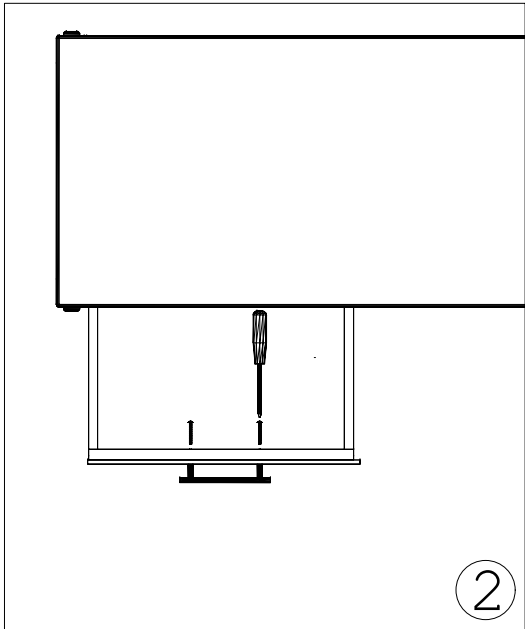
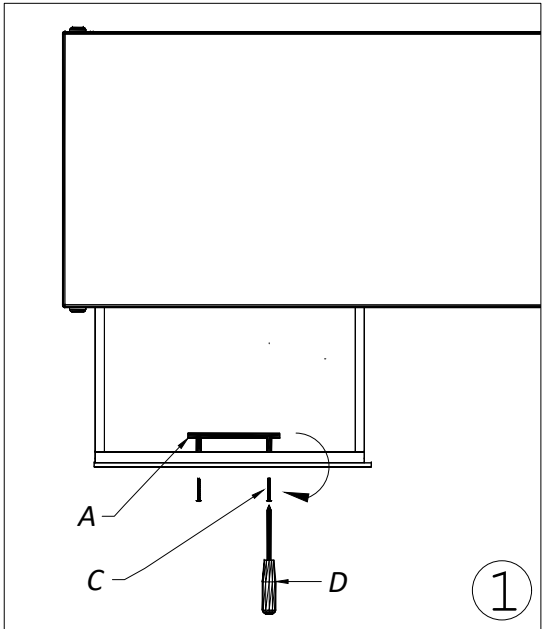


BLAKE DOOR PULL ASSEMBLY INSTRUCTIONS



PARTS LIST	
A	IRON PULL
B	SCREW 3/16"x1"
C	SCREW 3/16"x1.5"
TOOL REQUIRED	
D	PHILLIPS SCREW DRIVER NOT INCLUDED
NOTE: IRON PULL IS PRE ASSEMBLED	

BLAKE DRAWER PULL ASSEMBLY INSTRUCTIONS



Adjusting Floor Levelers

Your furniture has been expertly crafted and pre-adjusted by professionals. However, slight shifts can occur during transportation. If you notice that the doors are not perfectly aligned or the furniture wobbles, a quick adjustment can help ensure stability and a seamless look.

Step 1: Adjust the Floor Levelers

- **Check for Stability-** *Place the furniture in its final position on a level surface. If it wobbles or doesn't sit evenly, the floor levelers need adjusting.*
- **Locate the Levelers-** *These are small adjustable feet found at the bottom corners of your furniture.*
- **Adjust as Needed-** *Using your hand or a wrench, turn the levelers clockwise to raise or counterclockwise to lower the furniture. Make small adjustments and check stability after each turn.*

