



Study 20 by Jess Engle

1.0 Brimfield Black • 253669-003

Overview

Raised between Ethiopia, Malawi, Togo and South Africa, the now-Austinite's worldly upbringing can be sensed in her culture-rich works. From ink and watercolor to acrylic paintings and digital renderings, Engle seeks to rewrite life's visceral imperfections into something beautiful. Handmade in Austin, Texas.

Details

Overall Dimensions

18.00"w x 1.00"d x 18.00"h

Colors

1.0 Brimfield Black, Fredrix 558 Raw Canvas, Black Backer

Materials

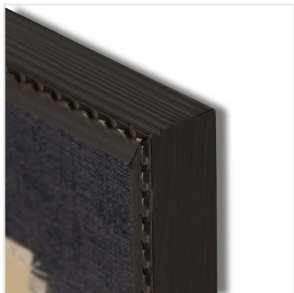
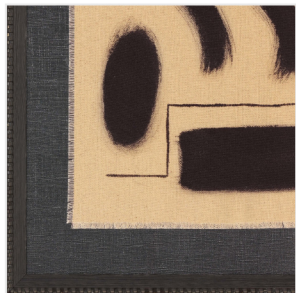
Decorative Weathered Black Pine, Raw Canvas, Linen Backer

Weight

10.00 lb

Volume

1.52 cu ft



This item is made to order in Austin, Texas and will be ready in 2-3 weeks.

As of 11/3/2025