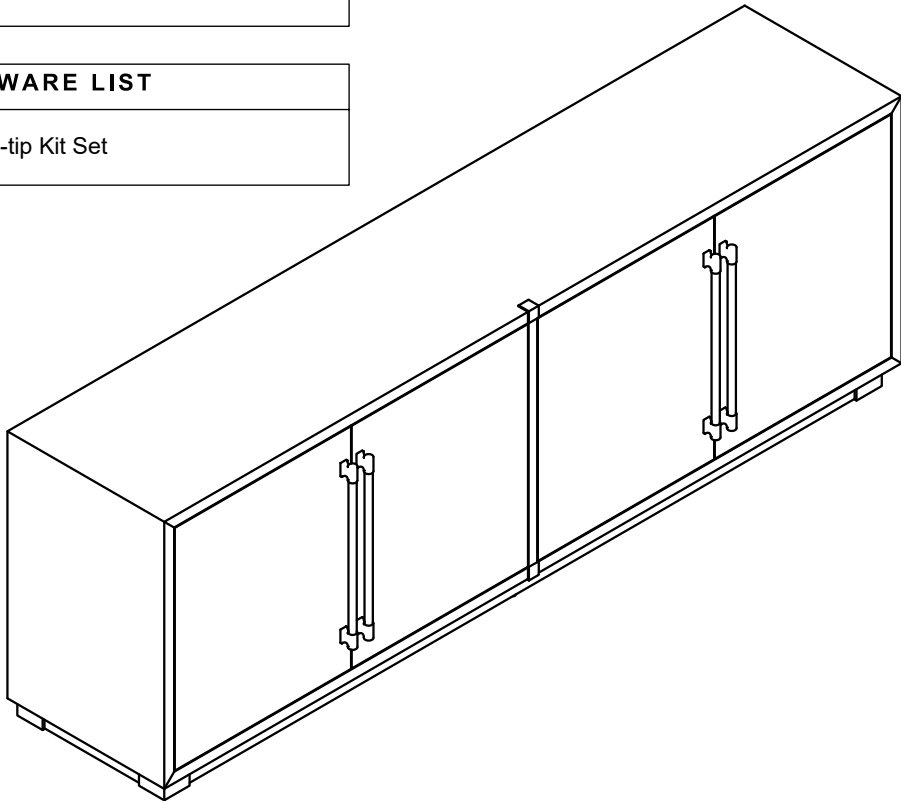


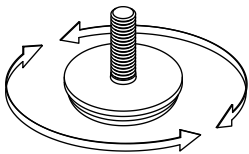
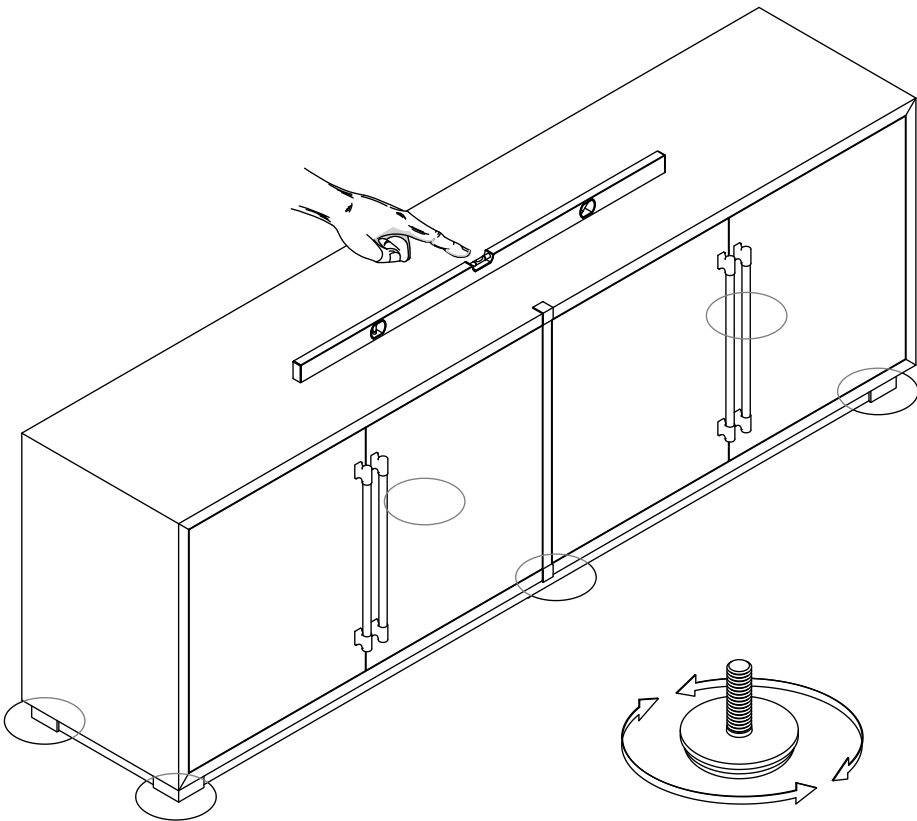
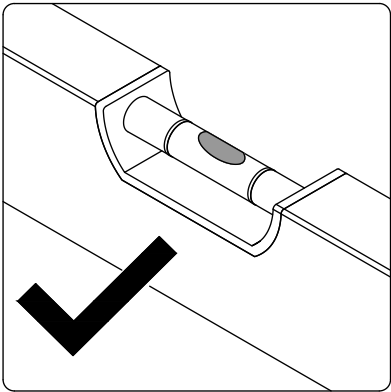
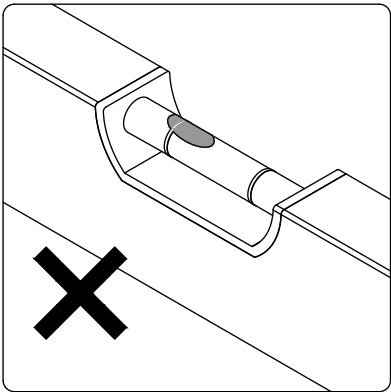
ADOLFO 94" CLOSED SIDEBORD  
ASSEMBLY INSTRUCTIONS

\* **REMARK:** There is a tip restraint kit provided on the back of this product please read the direction thoroughly and install immediately

HARDWARE LIST	
1	 [2] Anti-tip Kit Set



STEP: 1

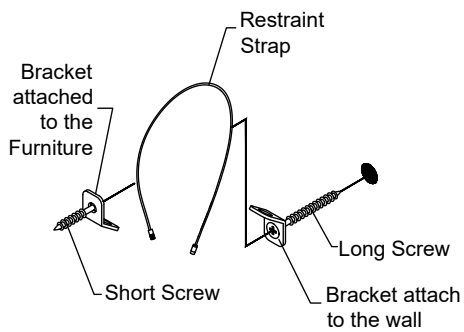
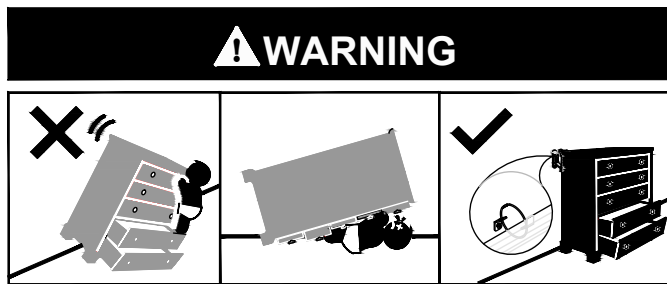


ADJUST THE LEVELERS  
IF NEEDED

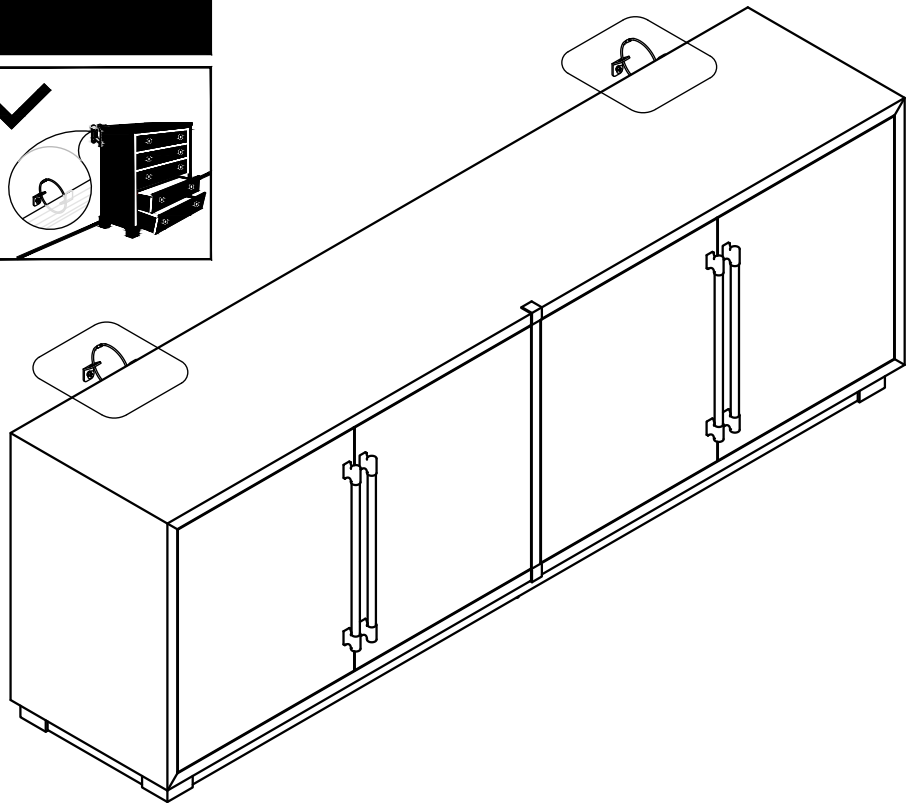
# ADOLFO 94" CLOSED SIDEBORD

## ASSEMBLY INSTRUCTIONS

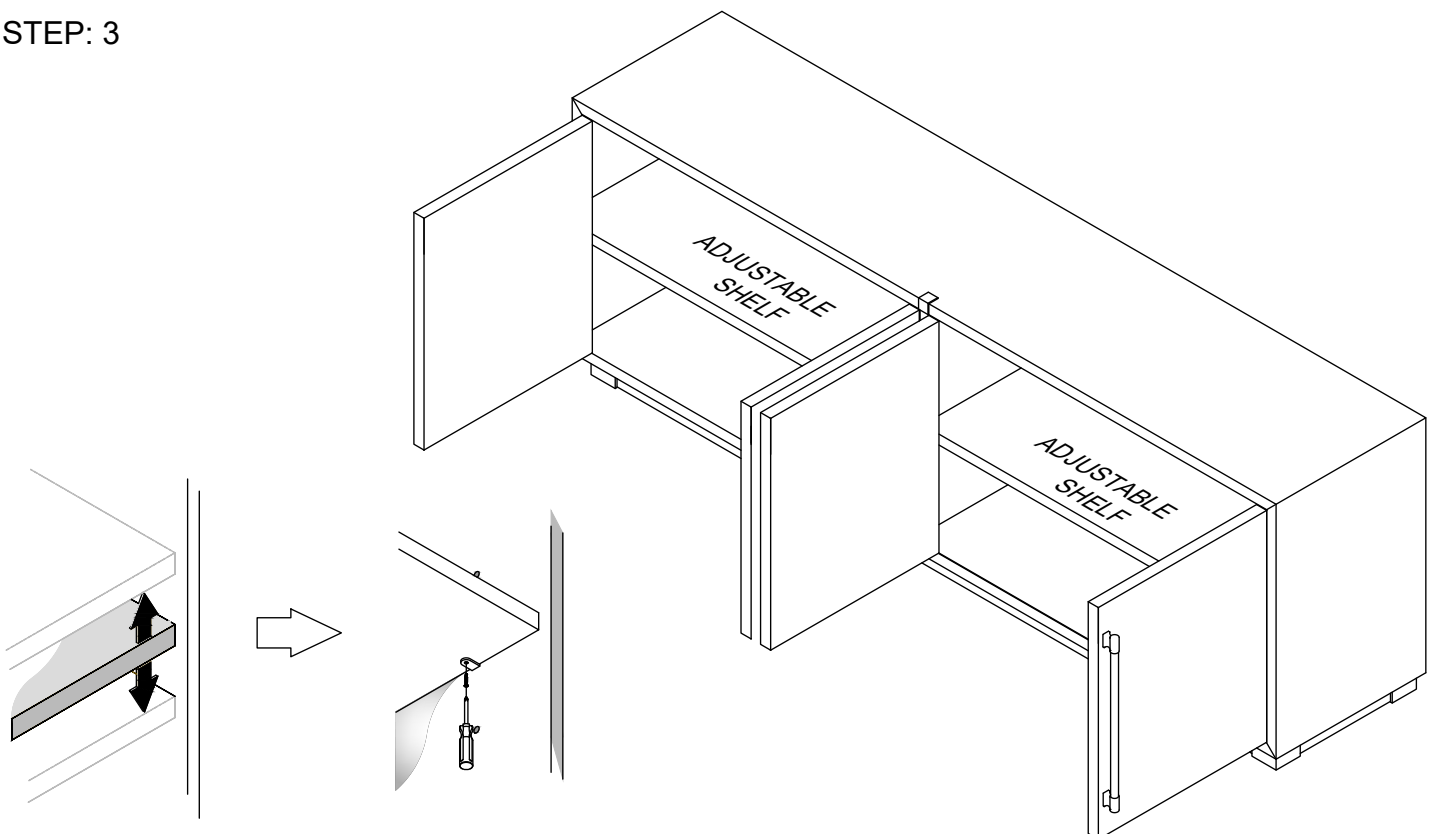
### STEP: 2



**NOTE:**  
Refer the instructions on the anti-tip kit bag.



### STEP: 3



SHELF ADJUSTMENT

# ADOLFO 94" CLOSED SIDEBORD

## ASSEMBLY INSTRUCTIONS

### **⚠ WARNING**

Death or serious injury may occur when children climb on audio and/or video equipment furniture. A remote control or toys placed on the furnishing may encourage a child to climb on the furnishing and as a result the furnishing may tip over on to the child.

Relocating audio and/or video equipment to furniture not specifically designed to support audio and/or video equipment may result in death or serious injury due to the furnishing collapsing or over turning onto a child.

Risk of death or serious injury. This surface must be placed against a fixed in place wall at least as tall as the television.

### **⚠ WARNING**

For use with televisions weighing 175 lbs/ 80 kgs or less. Use with heavier televisions may result in instability causing tip over resulting in death or serious injury.

All other support shelves should not be loaded more than 25 lbs.

**DO NOT EXCEED RECOMMENDED LOAD.** Use with products heavier than the maximum size and weights indicated may result in instability causing possible injury.

Do not allow children under 10 years to move cart.

