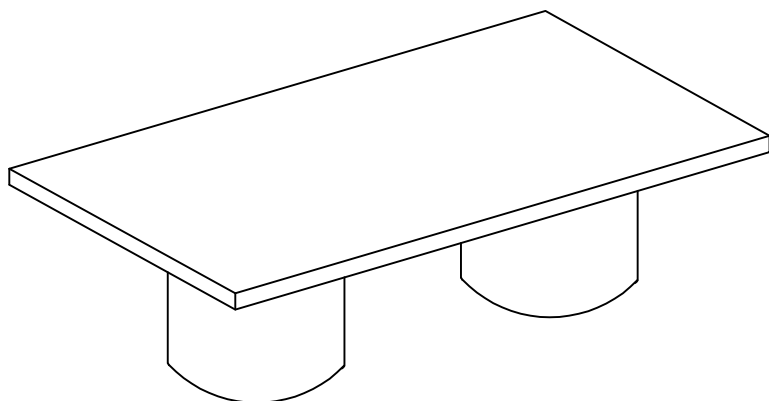

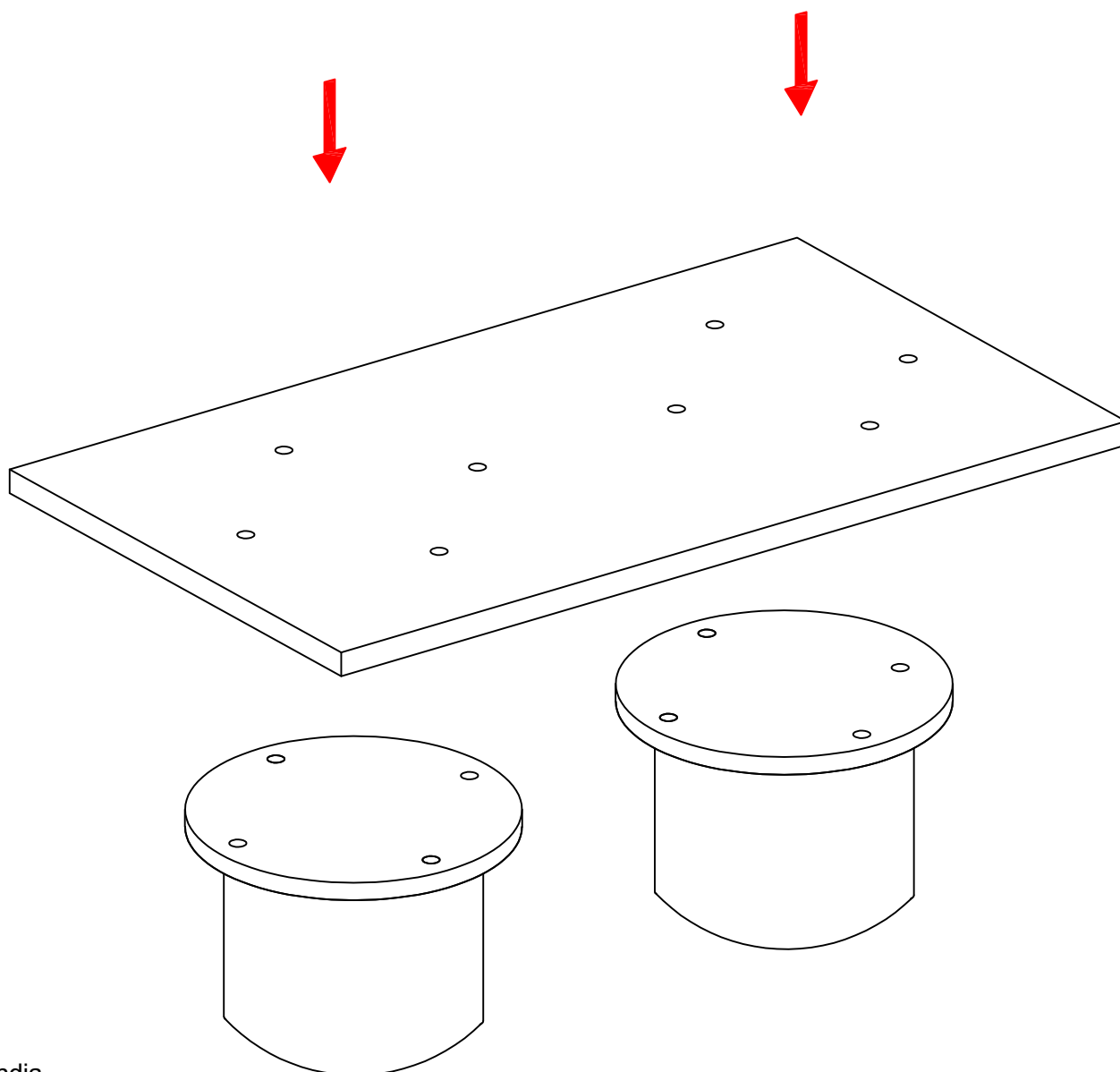


# ASSEMBLY INSTRUCTIONS FOR ANGELO COFFEE TABLE

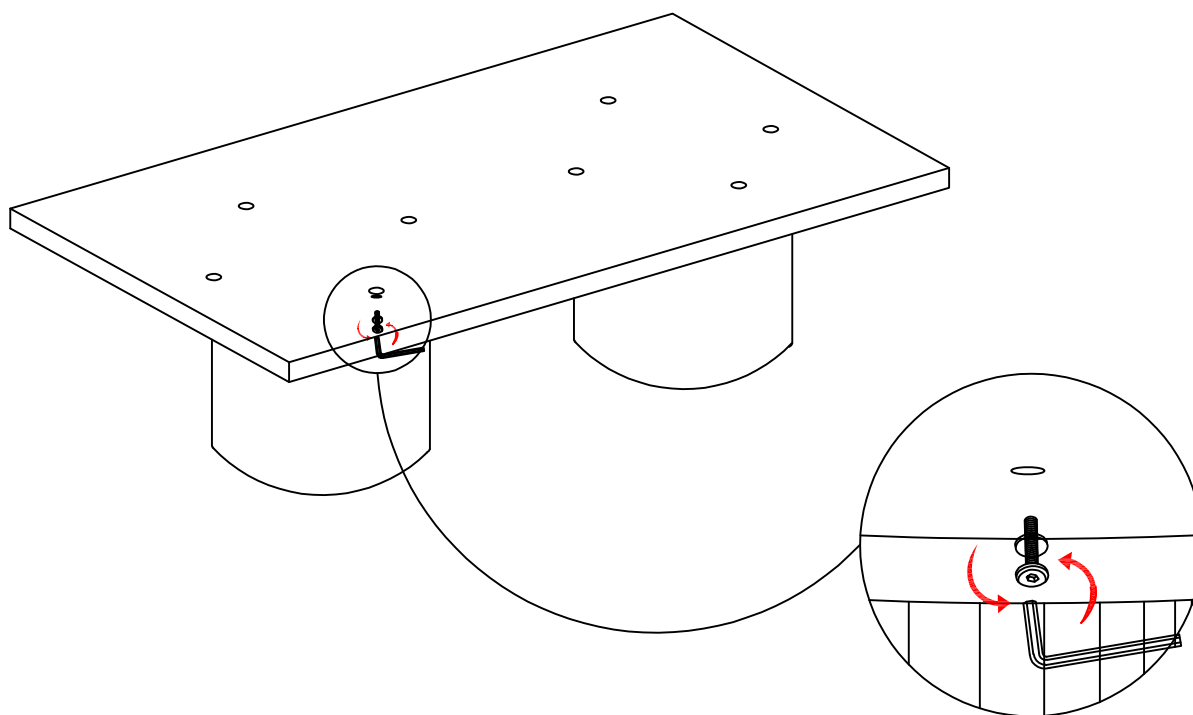


Hardware List				
A		Allen bolt	8x35mm	8
B		Flat washer	M10	8
C		Allen key	5mm	1

## Step-1



## Step-2



## Step-3

**Check for Stability** - Place the furniture in its final position on a level surface. If it wobbles or doesn't sit evenly, the floor levelers need adjusting.

**Locate the Levelers** - These are small adjustable feet found at the bottom corners of your furniture.

**Adjust as Needed** - Using your hand or a wrench, turn the levelers clockwise to raise or counterclockwise to lower the furniture. Make small adjustments and check stability after each turn.

