



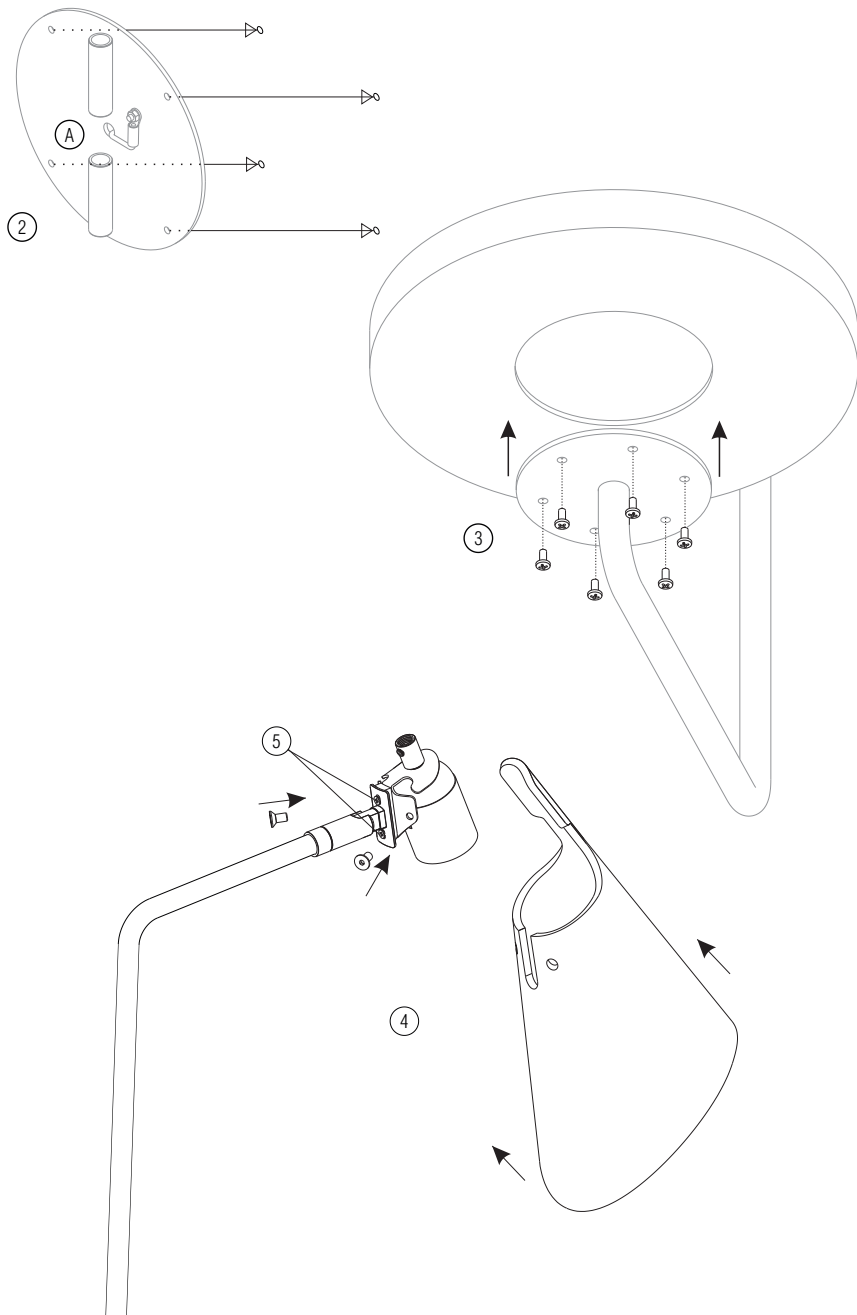
WARNING!

Be sure electrical power is OFF before and during installation or maintenance.
The luminaire must be installed by a qualified electrician, in accordance with all applicable local codes.
Ensure that the rated luminaire voltage requirements are compatible with the available mains supply in which it will be installed.

All LEDs are included in your lamp. Never touch the LED surface with your bare hands as this may reduce the life of your LED.

Do not alter, relocate or remove any electrical component.

This luminaire is provided with a table, and because this feature allows the addition of weight, it is mandatory that the luminaire shall have means to support it independently of the outlet box. When choosing the local of its installation, please take that into consideration and use a wall capable of supporting it.



Line: Balance
Family: Wall Lamp
Description: Accord Balance Wall Lamp 4151

Material: Natural Wood Veneer, MDF and Carbon Steel.
Weight: 7,90Kg / 17,41lbs

NOTE: THIS LUMINAIRE MUST BE MOUNTED OR SUPPORTED INDEPENDENTLY OF AN OUTLET BOX

ASSEMBLING THE FIXTURE

Read carefully all the Assembly Instructions below, before starting the installation process.

- ① Notice that the fixture is packed separately and dismantled in separate parts. Remove the protecting package from the pieces taking care to not harm any parts with cutting surfaces or objects. Lay the parts of the fixture on some horizontal surface in order to connect them, if needed use the protecting package to soften the surface and protect the parts from getting scratched or harmed.
- ② Once the protecting packages are removed, use the structural base (A) to mark the drilling points on the wall. Take care to center the base with the junction box in order to make the holes in the appropriate place. Also use a level to make sure that the fixture is completely aligned. **Do not mount the base on the wall yet**, this will be done in the last steps of the installation process.
- ③ Assemble the table on the fixture's lower metallic base and fasten the provided screws under the table, in order to lock them together. Use a manual crosstip screwdriver to fasten the screws (S10) and do not use excessive strength in order to not harm the threads or the table. Do not use an electric screwdriver for this process.
- ④ Take the superior metallic arm and join the dome to the metallic support through its upper opening, aligning the holes and fastening the provided screws (S01) to lock the dome in place.
- ⑤ Finish the fastening of the crosstip screws located on the swivel joints base, in order to keep it tight.



ATTENTION!

FAILURE TO COMPLY WITH THESE INSTRUCTIONS MAY CAUSE ACCIDENTS AND LOSS OF PRODUCT WARRANTY.
It is recommended to read these instructions completely and carefully before proceeding.

SAVE THESE INSTRUCTIONS FOR FUTURE REFERENCE.

ACCORD Lighting guarantees coverage against manufacturing defects including electrical components and finishes, for a period of three years, under normal use, from the date of purchase. For warranty service, please contact your local dealer for further instructions. Proof of date of purchase will be required for validation of warranty service.

The responsibility of the manufacturer regarding the product warranty is related to the correct observation of the instructions contained in this manual. The manufacturer is not responsible for any damage to the product caused by accidents, alterations of any kind, improper usage or improper installation. See the website for additional warranty details.

ACCORD Lighting reserves the right to change the dimensions and specifications contained in this manual without prior notice, in accordance with its policy of continuous product improvement. Please, contact the manufacturer if additional information is necessary. The illustrations in this manual are for guidance only and may vary in scale, dimensions and model details.



WARNING!

Be sure electrical power is OFF before and during installation or maintenance.
The luminaire must be installed by a qualified electrician, in accordance with all applicable local codes.
Ensure that the rated luminaire voltage requirements are compatible with the available mains supply in which it will be installed.

All LEDs are included in your lamp. Never touch the LED surface with your bare hands as this may reduce the life of your LED.

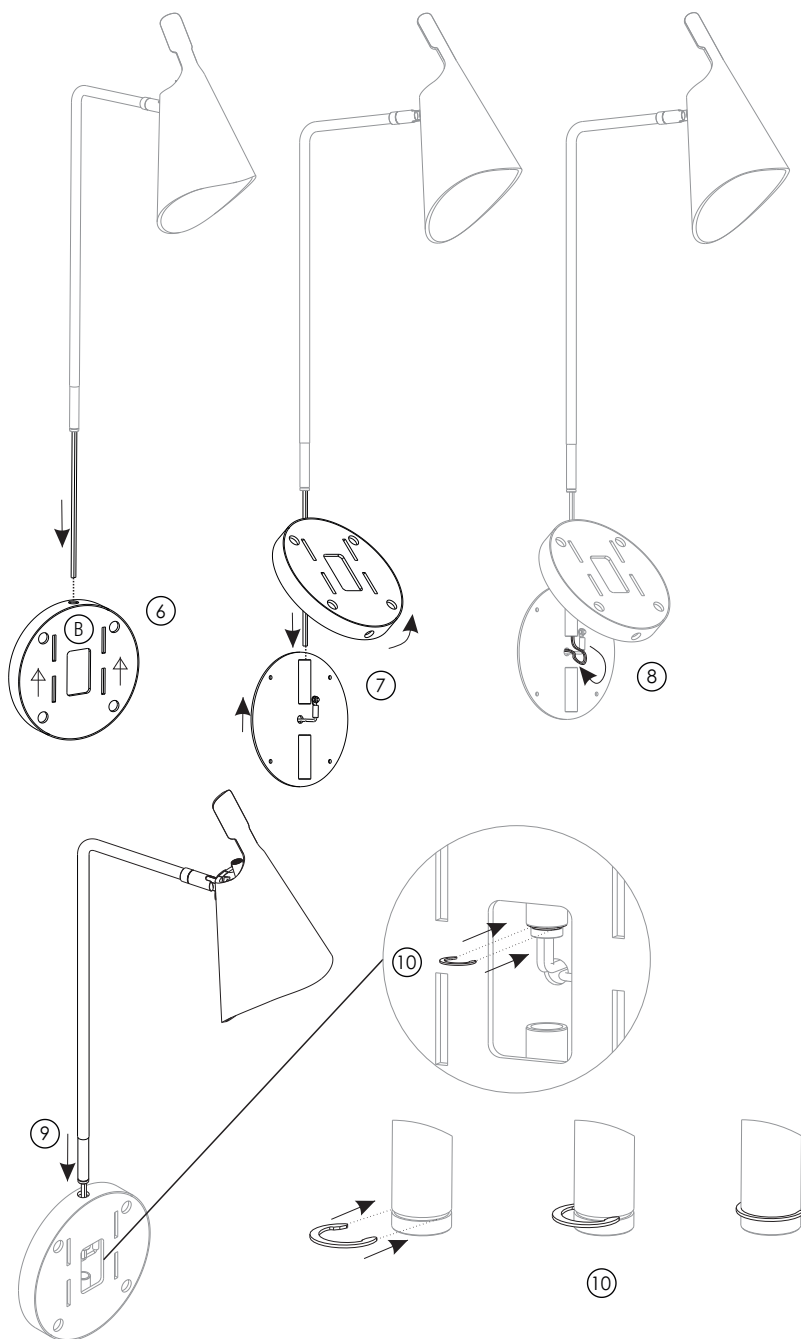
Do not alter, relocate or remove any electrical component.

This luminaire is provided with a table, and because this feature allows the addition of weight, it is mandatory that the luminaire shall have means to support it independently of the outlet box. When choosing the local of its installation, please take that into consideration and use a wall capable of supporting it.

Line: Balance
Family: Wall Lamp
Description: Accord Balance Wall Lamp 4151

Material: Natural Wood Veneer, MDF and Carbon Steel.
Weight:

NOTE: THIS LUMINAIRE MUST BE MOUNTED OR SUPPORTED INDEPENDENTLY OF AN OUTLET BOX



- ⑥ Once the superior part of the fixture is assembled, join it to the outer base (B) passing the energy cable through the upper hole. Pay attention to assemble the outer base turned up.
- ⑦ Rise the outer base in such a way that the structural base (C) can be connected, also passing the energy cable through the metallic dowell (D).
- ⑧ Pass the energy cable through the center hole of the structural base so it is available in the back of the fixture to connect it to the junction box in the last steps of the process.
- ⑨ With the energy cable going out of the structural base, carefully insert the superior metallic arm in the dowell through the upper hole of the outer base. As you lower the metallic arm, insert the excess energy cable in the center hole of the structural base.
- ⑩ Once the metallic arm is assembled in place, lock it with the metallic clamp, as shown in the images. Push it until you hear a "click".



ATTENTION!

FAILURE TO COMPLY WITH THESE INSTRUCTIONS MAY CAUSE ACCIDENTS AND LOSS OF PRODUCT WARRANTY.
It is recommended to read these instructions completely and carefully before proceeding.

SAVE THESE INSTRUCTIONS FOR FUTURE REFERENCE.

ACCORD Lighting guarantees coverage against manufacturing defects including electrical components and finishes, for a period of three years, under normal use, from the date of purchase. For warranty service, please contact your local dealer for further instructions. Proof of date of purchase will be required for validation of warranty service.

The responsibility of the manufacturer regarding the product warranty is related to the correct observation of the instructions contained in this manual. The manufacturer is not responsible for any damage to the product caused by accidents, alterations of any kind, improper usage or improper installation. See the website for additional warranty details.

ACCORD Lighting reserves the right to change the dimensions and specifications contained in this manual without prior notice, in accordance with its policy of continuous product improvement. Please, contact the manufacturer if additional information is necessary. The illustrations in this manual are for guidance only and may vary in scale, dimensions and model details.



WARNING!

Be sure electrical power is OFF before and during installation or maintenance. The luminaire must be installed by a qualified electrician, in accordance with all applicable local codes. Ensure that the rated luminaire voltage requirements are compatible with the available mains supply in which it will be installed.

All LEDs are included in your lamp. Never touch the LED surface with your bare hands as this may reduce the life of your LED.

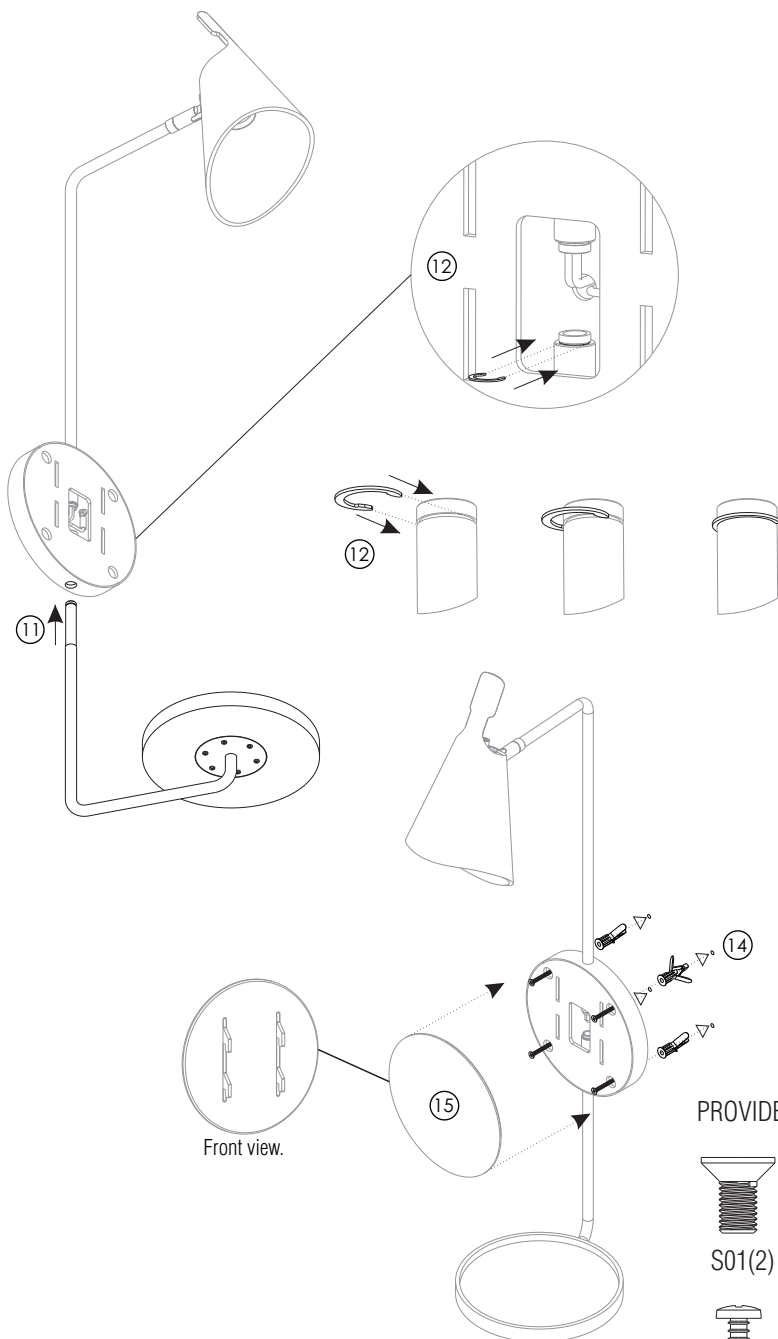
Do not alter, relocate or remove any electrical component.

This luminaire is provided with a table, and because this feature allows the addition of weight, it is mandatory that the luminaire shall have means to support it independently of the outlet box. When choosing the local of its installation, please take that into consideration and use a wall capable of supporting it.

Line: Balance
Family: Wall Lamp
Description: Accord Balance Wall Lamp 4151

Material: Natural Wood Veneer, MDF and Carbon Steel.
Weight:

NOTE: THIS LUMINAIRE MUST BE MOUNTED OR SUPPORTED INDEPENDENTLY OF AN OUTLET BOX



- ⑪ With the upper metallic arm joined, now do the same with the lower one: carefully insert it in the dowel through the bottom hole of the outer base.
- ⑫ Once the lower metallic arm is assembled in place, lock it with the metallic clamp, as shown in the images. Push it until you hear a click.
- ⑬ After the overall structure of the fixture is assembled, make the electrical connections in accordance to all applicable local codes.
- ⑭ Align the holes of the bases with the drilled holes in the wall, fastening the provided screws (S07) in order to mount the fixture on its final place.
- ⑮ Once the fixture is mounted on the wall, fit the front cover with the base, pushing it down to finish the assembling of the fixture.

USER GUIDE

The wooden dome which houses the light source is articulated. Hold the dome and rotate it in order to direct the light to the desired spot. Be careful to not exceed the swivel joint's articulation limit so it doesn't break.

The integrated table must not hold more than 1 Kg (1,2 lbs) in order to guarantee its stability. Take care to not harm or scratch the tabletop surface with cutting or wet objects, as its finish is a natural wood veneer or a lacquer paint.

It is recommended to use a mini LED bulb (E26 - A15) in this fixture. Due to the dome size a regular bulb size would come out of the dome causing excessive light glare.



ATTENTION!

FAILURE TO COMPLY WITH THESE INSTRUCTIONS MAY CAUSE ACCIDENTS AND LOSS OF PRODUCT WARRANTY. It's recommended to read these instructions completely and carefully before proceeding.

SAVE THESE INSTRUCTIONS FOR FUTURE REFERENCE.

ACCORD Lighting guarantees coverage against manufacturing defects including electrical components and finishes, for a period of three years, under normal use, from the date of purchase. For warranty service, please contact your local dealer for further instructions. Proof of date of purchase will be required for validation of warranty service.

The responsibility of the manufacturer regarding the product warranty is related to the correct observation of the instructions contained in this manual. The manufacturer is not responsible for any damage to the product caused by accidents, alterations of any kind, improper usage or improper installation. See the website for additional warranty details.

ACCORD Lighting reserves the right to change the dimensions and specifications contained in this manual without prior notice, in accordance with its policy of continuous product improvement. Please, contact the manufacturer if additional information is necessary. The illustrations in this manual are for guidance only and may vary in scale, dimensions and model details.