



WARNING!

Be sure electrical power is OFF before and during installation or maintenance.
The luminaire must be installed by a qualified electrician, in accordance with all applicable local codes.

Ensure that the rated luminaire voltage requirements are compatible with the available mains supply in which it will be installed.
All LEDs are included in your lamp. Never touch the LED surface with your bare hands as this may reduce the life of your LED.
Do not alter, relocate or remove any electrical component.

Line: LEAF
Family: WALL
Description: ACCORD LEAF SCONCE 4204

Input voltage: 120 - 240V
Input frequency: 60Hz

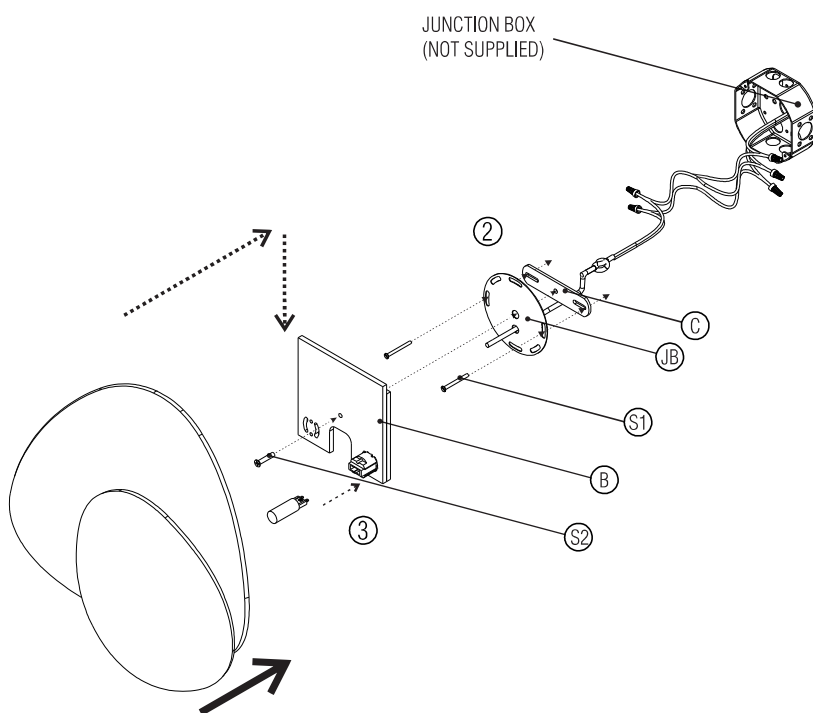
Material: Natural Wood Vener and MDF.

Turn off the electrical power before starting the installation, and keep it turned off until the installation is completed.

- ① Make the electrical connections in compliance with all the safety standards and local electrical codes. This product must be installed in accordance with the applicable installation code by a person familiar with the construction and operation of the product, and the hazards involved.
- ② Using the (S1) screws, fixate the crossbar (C) and junction box cover (JB) into the junction box. Bring the support base (B) close to the wall, and using the (S2) screw, fixate the support base into the crossbar.
- ③ Install a G-9 bulb with a maximum power of 7W in the sockets provided.
- ④ Next, carefully align the luminaire in relation to the base and insert the bulb through the opening located at the back of the piece.
After inserting the bulb, attach the luminaire to the base as demonstrated in the illustrations.

Turn on the electrical power.

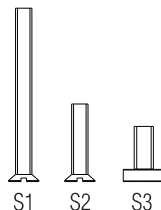
The luminaire is ready for use.



ATTENTION!

FAILURE TO COMPLY WITH THESE INSTRUCTIONS MAY CAUSE ACCIDENTS AND LOSS OF PRODUCT WARRANTY.
It's recommended to read these instructions completely and carefully before proceeding.

PROVIDED SCREWS



SAVE THESE INSTRUCTIONS FOR FUTURE REFERENCE.

ACCORD Lighting guarantees coverage against manufacturing defects including electrical components and finishes, for a period of three years, under normal use, from the date of purchase. For warranty service, please contact your local dealer for further instructions. Proof of date of purchase will be required for validation of warranty service.

The responsibility of the manufacturer regarding the product warranty is related to the correct observation of the instructions contained in this manual.
The manufacturer is not responsible for any damage to the product caused by accidents, alterations of any kind, improper usage or improper installation.
See the website for additional warranty details.

ACCORD Lighting reserves the right to change the dimensions and specifications contained in this manual without prior notice, in accordance with its policy of continuous product improvement. Please, contact the manufacturer if additional information is necessary. The illustrations in this manual are for guidance only and may vary in scale, dimensions and model details.



WARNING!

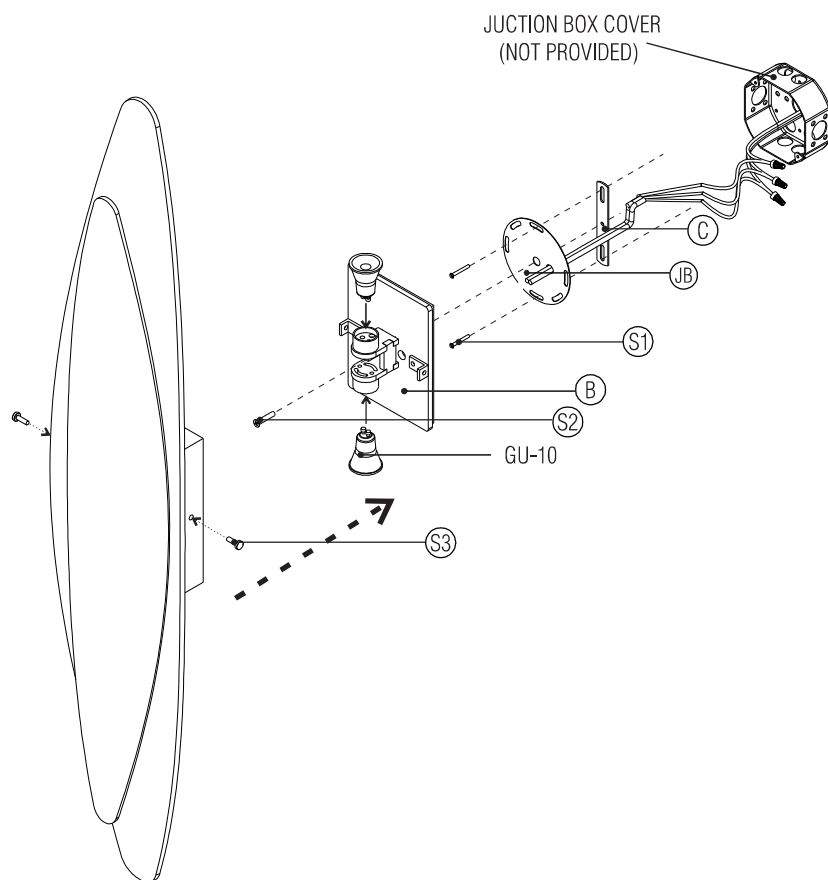
Be sure electrical power is OFF before and during installation or maintenance.
The luminaire must be installed by a qualified electrician, in accordance with all applicable local codes.

Ensure that the rated luminaire voltage requirements are compatible with the available mains supply in which it will be installed.
All LEDs are included in your lamp. Never touch the LED surface with your bare hands as this may reduce the life of your LED.
Do not alter, relocate or remove any electrical component.

Line: LEAF
Family: WALL
Description: ACCORD LEAF SCENCE 4205

Input voltage: 120 - 240V
Input frequency: 60Hz

Material: Natural Wood Vener and MDF.



Turn off the electrical power before starting the installation, and keep it turned off until the installation is completed.

- ① Make the electrical connections in compliance with all the safety standards and local electrical codes. This product must be installed in accordance with the applicable installation code by a person familiar with the construction and operation of the product, and the hazards involved.
- ② Using the (S1) screws, fixate the crossbar (C) and junction box cover (JB) into the junction box. Bring the support base (B) close to the wall, and using the (S2) screw, fixate the support base into the crossbar.
- ③ Install a GU-10 bulb with a maximum power of 8W in the sockets provided.
- ④ Next, bring the luminaire closer to the base and carefully pass the bulbs through the opening at the back of the piece. With the bulbs in place, secure the luminaire using the provided finishing screws (P3), as illustrated.

Turn on the electrical power.

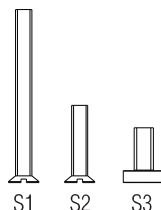
The luminaire is ready for use.



ATTENTION!

FAILURE TO COMPLY WITH THESE INSTRUCTIONS MAY CAUSE ACCIDENTS AND LOSS OF PRODUCT WARRANTY.
It's recommended to read these instructions completely and carefully before proceeding.

PROVIDED SCREWS



SAVE THESE INSTRUCTIONS FOR FUTURE REFERENCE.

ACCORD Lighting guarantees coverage against manufacturing defects including electrical components and finishes, for a period of three years, under normal use, from the date of purchase. For warranty service, please contact your local dealer for further instructions. Proof of date of purchase will be required for validation of warranty service.

The responsibility of the manufacturer regarding the product warranty is related to the correct observation of the instructions contained in this manual.
The manufacturer is not responsible for any damage to the product caused by accidents, alterations of any kind, improper usage or improper installation.
See the website for additional warranty details.

ACCORD Lighting reserves the right to change the dimensions and specifications contained in this manual without prior notice, in accordance with its policy of continuous product improvement. Please, contact the manufacturer if additional information is necessary. The illustrations in this manual are for guidance only and may vary in scale, dimensions and model details.