

ASSEMBLY INSTRUCTIONS

ITEM DESCRIPTION:

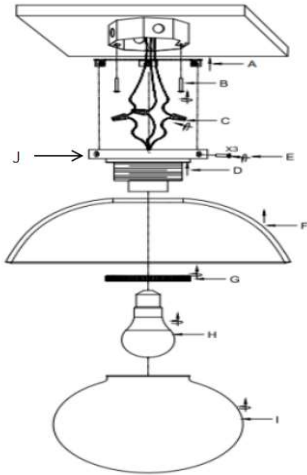
ITEM NO.: GADFC01 NAME: GLAZE SMALL FLUSH MOUNT

MATERIAL TYPE: METAL FINISH:ANTIQUE BRASS

SOCKET TYPE: E26 SOCKET QTY: 1PC

BULB WATTAGE: 40W TYPE A

VOLTAGE: 120V ITEM NET WEIGHT: 7.7LBS



PARTS INCLUDED:

Mounting Plate(A)	Qty: 1	Glass shade(I)	Qty: 1
Mounting Screws(B)	Qty: 2		
Wire cap(C)	Qty: 3pcs		
Fixture (D)	Qty: 3pcs		
Canopy screw (E)	Qty: 1		
Ceramic shade(F)	Qty: 1		
Metal ring(G)	Qty: 1		
Bulb(H)	Qty: 1(Not included)		

HARDWARE INCLUDED:

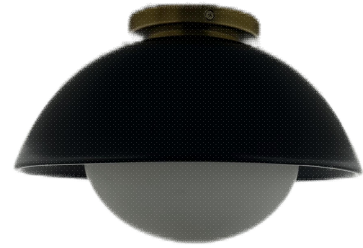
Mounting Screws	Qty: 2
Plastic Wire cap	Qty: 3

TOOLS NEEDED (Not Included):

1 Screwdriver

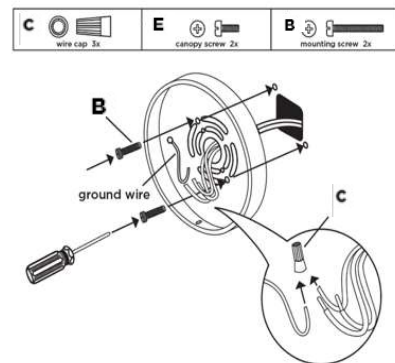
These instructions are provided for safety. It is very important that they are read carefully and completely before beginning installation.

We strongly suggest that all hard-wired fixtures must be installed by a professional electrician.



TO ASSEMBLE:

1. Shut off the main electrical supply from the main fuse box/circuit breaker.
2. Attach the mounting plate (A) to the ceiling junction box using the enclosed mounting screws (B) and tighten screws with screwdriver.
3. Connect ground wire from ceiling to ground wire from lamp using wire caps(C).
4. Attach house wire to lamp wires as shown. Fasten the pairs together with a wire caps(C).
- DO NOT REVERSE THE HOT AND NEUTRAL CONNECTIONS OR SAFETY WILL BE COMPROMISED.
5. Attach fixture (D) to the mounting plate (A) and secure it with canopy screw (E). Tighten using a screwdriver.
6. Attach the ceramic shade (F) to the fixture (D) and secure it with the metal ring (G).
7. Install a light bulb (H) into the socket (40W A or 10W CFL or 9W LED - bulbs are not included).
8. Attach the glass shade (I) to the fixture (D) in a clockwise direction until it's tight.
9. Restore power to the junction box and test the fixture.



CARE INSTRUCTIONS:

Wipe with a soft, dry cloth. To protect finish, avoid the use of chemicals and household cleaners.

For customer service questions call 1-800-338-2150

ARTERIO RS