

ASSEMBLY INSTRUCTIONS

ITEM DESCRIPTION:

ITEM NO.: DWC98

NAME: Lane Sconce

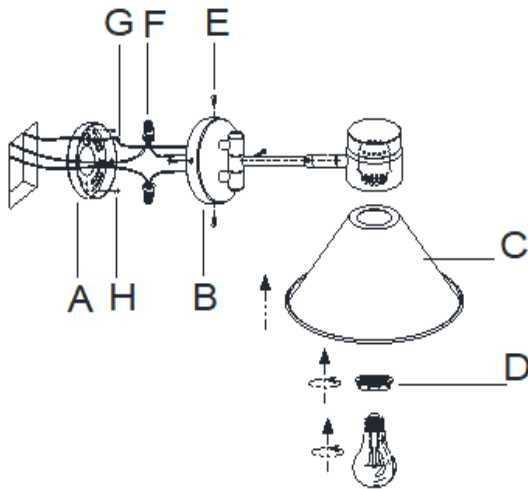
MATERIAL TYPE: Iron FINISH: Antique Brass/Oil Rubber Bronze

SOCKET TYPE:E26 ceramic SOCKET QTY: 1 PC

BULB WATTAGE: TYPE A 60W /13W LED

VOLTAGE: 110-120V

ITEM NET WEIGHT:3.0 LBS



PARTS INCLUDED:

Mounting Plate(A) Qty: 1PC

Back Plate(B) Qty: 1PC

Metal Shade(C) Qty: 1PC

Socket Ring(D) Qty: 1PC

Canopy Screw(E) Qty: 4PCS

HARDWARE INCLUDED:

Plastics Wire Cap(F) Qty: 3PCS

Mounting Screws(H) Qty: 2PCS

Ground Screw(G) Qty: 1 PC

TOOLS NEEDED (Not Included):

1 Screwdriver

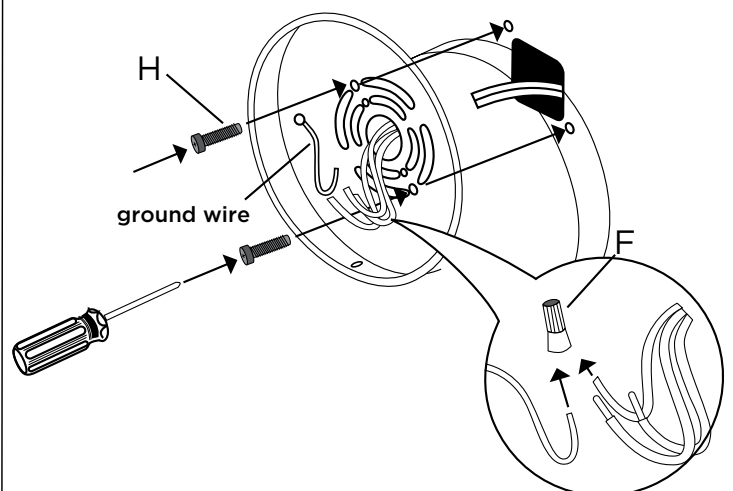
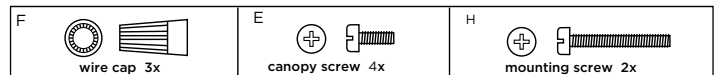
These instructions are provided for safety. It is very important that they are read carefully and completely before beginning installation.

We strongly suggest that all hard-wired fixtures must be installed by a professional electrician.



TO ASSEMBLE:

1. Shut off the main electrical supply from the main fuse box/circuit breaker.
 2. Carefully unpack all fixture parts and hardware and lay them on a soft surface for assembly.
 3. Unscrew Socket Ring(D) off the socket, and attach the Metal Shade(C) to the socket, then use socket ring to secure the shade till tight.
 4. Pull the electrical cord of "J BOX" through the exit hole of the Mounting Plate(A).
 5. Attach Mounting plate(A) to the junction box using mounting screws (H).
 6. Connect ground wire from wall to ground wire from lamp using wire caps (F).
 7. Attach house wire to lamp wires as shown. Fasten the pairs together with a wire caps
- DO NOT REVERSE THE HOT AND NEUTRAL CONNECTIONS OR SAFETY WILL BE COMPROMISED.**
8. Attach front face of light to back plate by inserting canopy screws (E) through predrilled holes in front face and into back plate as shown. Tighten using screwdriver.
 9. Insert one TYPE A 60W bulb(or suitable LED 13W bulb,NOT INCLUDED) in the socket.
- DO NOT EXCEED SPECIFIED WATTAGE**
- 10.Restore power to junction box and test fixture.



CARE INSTRUCTIONS:

Wipe with a soft, dry cloth. To protect finish, avoid the use of chemicals and household cleaners.

For customer service questions call 1-800-338-2150

ARTERIO RS