

ASSEMBLY INSTRUCTIONS

ITEM DESCRIPTION:

ITEM NO: GADLC01 NAME: MELT CHANDELIER

MATERIAL TYPE: METAL FINISH: ANTIQUE BRASS

SOCKET TYPE: LED SOCKET QTY: 5

BULB WATTAGE: 15W

VOLTAGE: 100V-120V ITEM NET WEIGHT: 25.5LBS

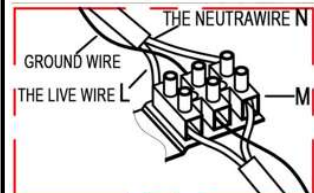


Fig.2

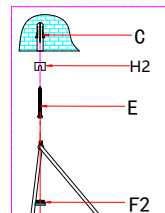
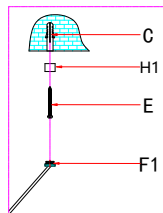
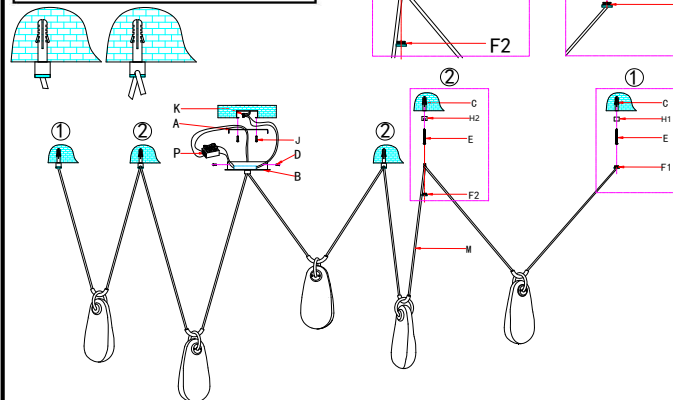


Fig.1



PLEASE IGNORE THIS DEVICE IN THE CANOPY



PARTS INCLUDED:

Mounting Plate (A)	Qty:1PC	Fabric Wire (M)	Qty:1PC
Canopy(B)	Qty:1PC	Fast Connector (P)	Qty:1PC
Anchor (C)	Qty:5PCS		
Canopy Screw(D)	Qty:2PCS		
Strengthened Screw(E)	Qty:5PCS		
Wire W/ Metal Cover (F1)	Qty:2PCS		
Metal Cover (F2)	Qty:3PCS		
Metal Cap (H1)	Qty:2PCS		
Notching Metal Cap (H2)	Qty:3PCS		
Mounting Screw (J)	Qty:2PCS		
Plastic Wire Connector(K)	Qty:3PCS		

HARDWARE INCLUDED:

Mounting Screws	2
Plastic Wire Connector	3
Green Ground Screw	1

TO INSTALL YOU WILL NEED:

- 2 people recommended
- Phillips Screwdriver
- Allen Wrench

These instructions are provided for safety. It is very important that they are read carefully and completely before beginning installation.

We strongly suggest that all hard-wired fixtures must be installed by a professional electrician.

For customer service questions call 1-800-338-2150



TO ASSEMBLE:

1. Shut off the main electrical supply from the main fuse box/ circuit breaker.
2. Carefully unpack all fixture parts and hardware and lay them on a soft surface for assembly.
3. Gently pull wiring down from ceiling junction box and allow to hang.
4. Remove mounting plate(A) from the canopy(B) by unscrewing the canopy screw(D).
5. PLEASE PAY SPECIAL ATTENTION TO THE FACT THAT YOU DO NOT NEED TO CONNECT THE WIRE TO THE DEVICE (M). IT IS USED FOR WIRE CONNECTIONS IN THE EUROPEAN MARKET.
6. Carefully inspect the chandelier's fixture wires.
Neutral fixture wire: White
Hot fixture wire: Black
Ground wire: Bare wire
7. Wrap ground wire of lamp assembly and ground wire of junction box together and fasten together with a wire nut and wrap the connection with electrical tape.
8. Attach the neutral fixture wire from the chandelier to the neutral junction box wire (usually white). Fasten each together with a wire nut and wrap the connection with electrical tape.
9. Attach the hot fixture wire from the chandelier to the hot junction box wire (usually black). Fasten each together with a wire nut and wrap the connection with electrical tape.

DO NOT REVERSE THE HOT AND NEUTRAL CONNECTIONS OR SAFETY WILL BE COMPROMISED.

10. Finally, please note that this product is suitable for 0-10V dimmer switches. Connect the purple wire (+) and the gray wire (-) to the dimmer switch as shown in Fig. 3. BE SURE NO STRANDS ARE EXPOSED.

11. Connect the power wires of the lamp together using the fast connector (P). Connect the black wire to the positive electrode and the white wire to the negative electrode of the fast connector (P).

12. Gently tuck the wire connections(K) neatly into the ceiling junction box.

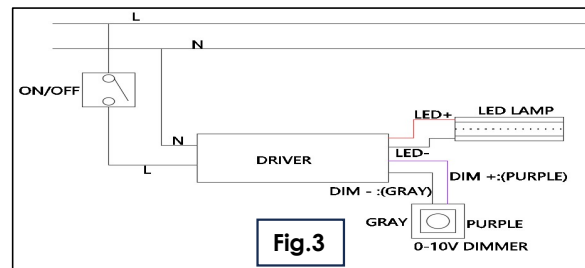
13. Place the mounting plate(A) over the center of the ceiling junction box.

14. Align holes in mounting plate(A) with holes in junction box and attach with two mounting screws(J). Secure screws with a Phillips head screwdriver.

15. Push canopy(B) up over the mounting plate(A) until it is flush with the ceiling. Secure canopy(B) by 2 canopy screw(D) and secure screws with a Phillips head screwdriver.

16. Position the Metal Cap (H1) and Notching Metal Cap (H2) at the desired location on the ceiling, and mark 5 spots with a pencil to drill holes. Drill 5 holes at the marked spots and insert the anchors (Q) into the drilled holes. Fix Metal Cap (H1) and Notching Metal Cap (H2) with a strengthened screw (E) by screwing it into the anchor (Q). Screw the wire w/ metal cover(F1) to the metal cap (H1) until it is tight, as shown in Fig. 1. Fix the fabric wire(M) to the ceiling by attaching the Metal Cover (F2) to the Notching Metal Cap (H2) and then secure it by turning it clockwise until tight, as shown in Fig. 2.

17. Restore power to junction box and test fixture.



CARE INSTRUCTIONS:

Wipe with a soft, dry cloth. To protect finish, avoid the use of chemicals and household cleaners.

ARTERIO RS