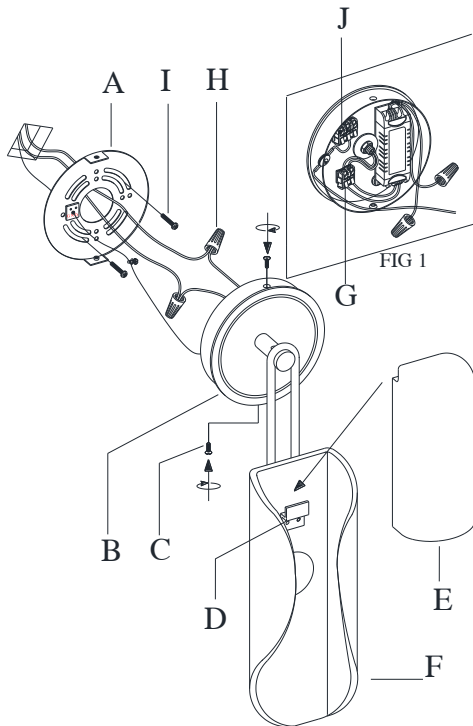


ASSEMBLY INSTRUCTIONS

ITEM DESCRIPTION:

ITEM NO.: GADWC11	NAME: ROLL SCONCE
MATERIAL TYPE: STEEL	FINISH:ANTIQUE BRASS
SOCKET TYPE: LED COB	SOCKET QTY: 1
BULB WATTAGE: 6W DIMMABLE	
VOLTAGE: 110V-120V	ITEM NET WEIGHT:5.8 LBS



PARTS INCLUDED:

Mounting Plate(A)	Qty:1PC
Back Plate (B)	Qty:1PC
Canopy Screw (C)	Qty:2PCS
Hook (D)	Qty:1PC
Glass Shade (E)	Qty:1PC
Poly Diffuser (F)	Qty:1PC
2-Wire Terminal (G)	Qty: 1PC

HARDWARE INCLUDED:

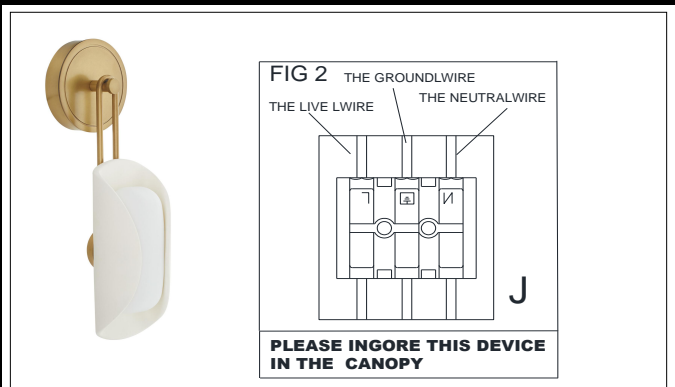
Plastics Wire Cap (H)	Qty: 3PCS
Mounting Screws(I)	Qty: 2PCS

TOOLS NEEDED(Not Included):

1 Screwdriver

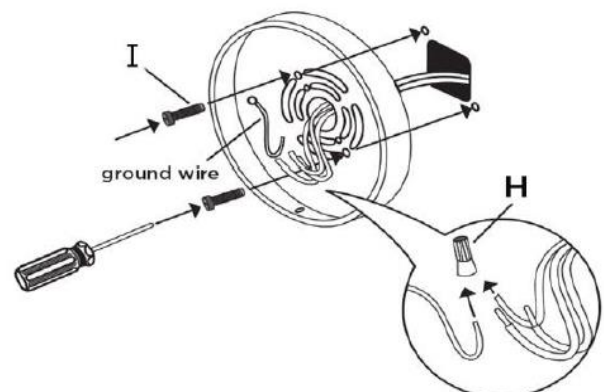
These instructions are provided for safety. It is very important that they are read carefully and completely before beginning installation.

We strongly suggest that all hard-wired fixtures must be installed by a professional electrician.



TO ASSEMBLE:

1. Shut off the main electrical supply from the main fuse box/ circuit breaker.
2. Carefully unpack all fixture parts and hardware and lay them on a soft surface for assembly.
3. Remove Mounting Plate(A) from Back Plate(B) by unscrewing the Canopy screws(C).
4. Hang the Glass shade(E) on the Hook(D) in Poly diffuser(F) carefully as arrow shown.
5. Pull the electrical cord of "J BOX" through the exit hole of the Mounting Plate(A).
6. Attach Mounting plate(A) to the junction box using mounting screws (I).
7. Connect ground wire from wall to ground wire from lamp using wire caps (H).
8. Attach house wire to lamp wires as shown. Fasten the pairs together with a wire caps.
DO NOT REVERSE THE HOT AND NEUTRAL CONNECTIONS OR SAFETY WILL BE COMPROMISED.
9. Please note the driver output wires already assembled by using 2-Wire Terminal(G).
10. Please ignore the 3-Wire Terminal(J) in the canopy as Fig2.
11. Attach front face of light to back plate by inserting canopy screws through predrilled holes in front face and into back plate as shown. Tighten using screwdriver.
12. Restore power to junction box and test fixture.



CARE INSTRUCTIONS:

Wipe with a soft, dry cloth. To protect finish, avoid the use of chemicals and household cleaners.

For customer service questions call 1-800-338-2150

ARTERIO RS