

ASSEMBLY INSTRUCTIONS

ITEM DESCRIPTION:

ITEM NO.: FAI24

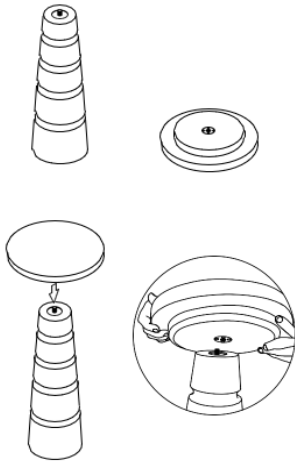
NAME: IMANI DRINK TABLE

MATERIAL TYPE: Marble

FINISH: Toronto

ITEM NET WEIGHT: 30.86 Lbs

STEP 1



PARTS INCLUDED:

Top	Qty: 1 Pc
-----	-----------

Base	Qty: 1 Pc
------	-----------

Note - Ensure everything is aligned properly before tightening to avoid any damage.



Do not throw away packing materials until assembly is complete.

TO ASSEMBLE:

1) Place the Marble Top (B) and Wooden Base (A) on the floor as shown in Fig. 1.

2) Carefully place the Marble Top (B) onto the Wooden Base (A) as indicated in Fig. 2

3) Align the threaded screw on Base(A) with the hole on Top (B). Rotate the Top (B) in a clockwise direction until it is securely fastened to the Base (A).

4) Tighten the screws completely to finish the assembly.

CARE INSTRUCTIONS:

Wipe with a soft, dry cloth. To protect finish, avoid the use of chemicals and household cleaners.

For customer service questions call 1-800-338-2150

A R T E R I O R S

