

ASSEMBLY INSTRUCTIONS

ITEM DESCRIPTION:

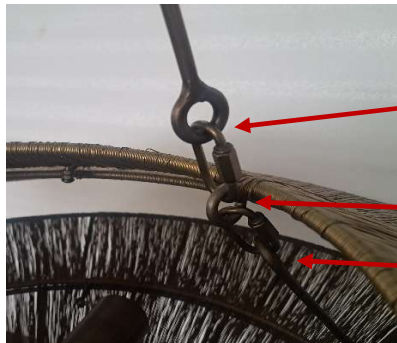
ITEM NO.: DLI10 NAME: Lexa Pendant

MATERIAL TYPE: Iron FINISH: Antique Brass

SOCKET TYPE: E26 Type / SOCKET QTY: 03

BULB WATTAGE: 60W BULB/16W SBCFL/13W SBLED

VOLTAGE: 250 V ITEM NET WEIGHT: 45.0LBS



Main Body -
Spoke with
Swift Link

Ring On

Small Tier -
Spoke with

PARTS INCLUDED:

Mounting Plate Qty: 1

Canopy Qty: 1

Main Body Qty: 1

Large Tier Qty: 1

Small Tier Qty: 1

Pipes (1)3", (1)6", (2)12 Qty: 4

HARDWARE INCLUDED:

Mounting Screws 2 Allen Wrench 1

Plastic Wire Connect 2

Green Ground Screw 1

TO INSTALL YOU WILL NEED:

- 2 people recommended
- Phillips Screwdriver

These instructions are provided for safety. It is very important that they are read carefully and completely before beginning installation.

We strongly suggest that all hard-wired fixtures must be installed by a professional electrician.



TO ASSEMBLE:

1. SHUT OFF THE MAIN ELECTRICAL SUPPLY FROM THE MAIN FUSE BOX/CIRCUIT BREAKER.
2. Carefully unpack all fixture parts and hardware and lay them out on a clear workspace.
3. Included are (1) 3", (1) 6" pipe and (2) 12" pipes. Determine which of these you will need to reach your desired length. At least (1) 3" pipe must be used. Pass the attached electric cable through the desired amount of pipes, keeping the threaded part of the pipes toward the ceiling.
4. Screw each pipe to each other starting with the one closest to the Main Body and moving upwards to the canopy.
5. There is an Allen screw with each pipe and which should be tightened with the help of Allen wrench included with the hardware once pipes are assembled with each other as per desired height.
6. Gently pull wiring down from ceiling junction box and allow it to hang.
7. Remove mounting plate from the canopy by unscrewing the collar.
8. Carefully inspect the pendant's fixture wire. It is a round supply cord with insulating cover. Inside the insulation cover there are three conductor wire as follows:

Neutral fixture wire: White

Hot fixture wire: Black

Ground wire: Green

9. Carefully strip the outer insulation cover taking care that the insulation of the inner conductors is not damaged. Strip approximately 3" of the outer insulation cover to expose the three conductor wires. Strip $\frac{3}{4}$ " of the insulation off the three conductor wire.
10. Attach the Ground wire from the pendant to the Ground junction box wire (usually green or bare wire). Fasten each together with a wire nut and wrap the connection with electrical tape.
11. Attach the neutral fixture wire from the pendant to the neutral junction box wire (usually white). Fasten each together with a wire nut and wrap the connection with electrical tape.
12. Attach the hot fixture wire from the pendant to the hot junction box wire (usually black). Fasten each together with a wire nut and wrap the connection with electrical tape. **DO NOT REVERSE THE HOT AND NEUTRAL CONNECTIONS OR SAFETY WILL BE COMPROMISED.**
13. Gently tuck the wire connections neatly into the ceiling junction box.
14. Align holes in mounting plate with holes in junction box and attach with two mounting bolts. Secure bolts with a Phillips head screwdriver.
15. Push canopy up over the mounting plate until it is flush with the ceiling.
16. Push collar through hole in canopy and thread onto nipple on the mounting plate. Secure by turning collar clockwise until canopy is flush with the ceiling.
17. Carefully lift the large tier upwards. Make sure that the rings are positioned directly in front of the swift links. Insert each ring of the large tier into the swift link one by one. Tighten swift link to secure the ring in place. Similarly, the small tier has swift links attached to its spokes (rods). Carefully align these swift links with the rings on the large tier. Insert each swift link into the corresponding ring on the large tier and tighten it securely to hold the small tier in place.
18. Insert **(3) TYPE A 60W BULB / 16W SBCFL / 13 W SBLED** (not included) into the socket. **DO NOT EXCEED SPECIFIED WATTAGE.**
19. Restore power to junction box and test fixture.

CARE INSTRUCTIONS:

Wipe with a soft, dry cloth. To protect finish, avoid the use of chemicals and household cleaners.

For customer service questions call 1-800-338-2150

ARTERIO RS