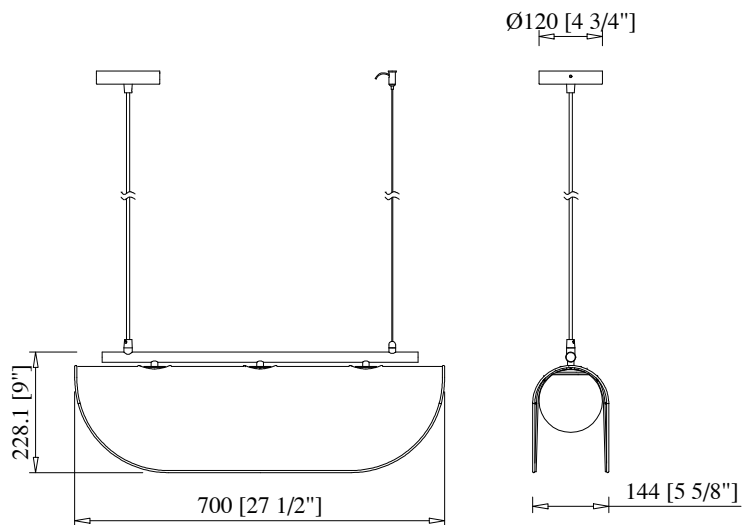
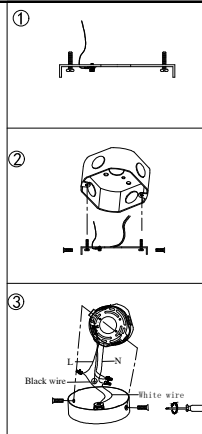
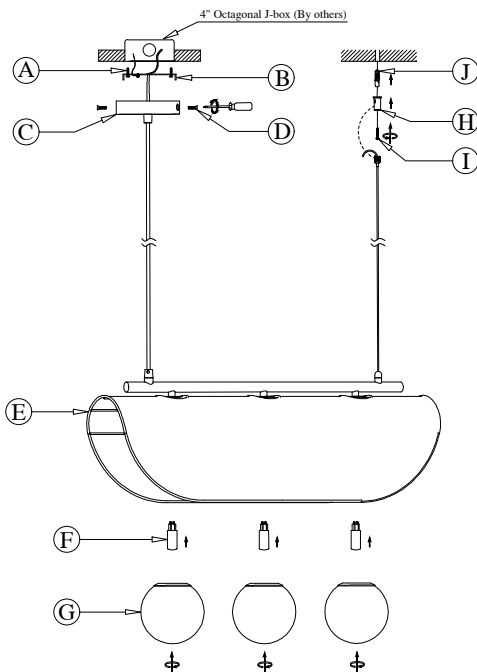


# DIAGRAM OF INSTALLATION STRUCTURE

SKU No. :CE1009209

Product Size: L27.6"\*W5.7"\*H81" (Max)

Light Source: 3 × G9 LED Bulb



- |                                     |                      |             |                     |                       |
|-------------------------------------|----------------------|-------------|---------------------|-----------------------|
| (A) Mounting Screw (2×)             | (B) Mounting Plate   | (C) Canopy  | (D) Flat screw (2×) | (E) Lamp Fixture Body |
| (F) G9 LED Bulb (3×)<br>(By others) | (G) Glass Shade (3×) | (H) Grasper | (I) Anchor Screw    | (J) Anchor            |

## Installation instruction

1. Turn off the power.
2. Unpack and take out the fixture/accessories.
3. Dismantle the mounting plate subassembly as picture (1) from the lamp fixture body(E), then install the mounting plate(B) to J-Box with the mounting screws(A).
4. Drill a suitable size hole at a suitable installation distance, then insert the anchor(J) into that hole.
5. Adjust the fixture's cable to the desired length.
6. Take out the main power supply's wires and ground wire from the J-box.
7. Connect the fixture to a suitable ground in accordance with local electrical codes.
8. Connect the White wire to the neutral power line wire with a wire nut.
9. Connect the Black wire to the hot power line wire with a wire nut.
10. Neatly place all wires and wire nut connections inside the J-box.
11. Install the canopy(C) to ceiling with the flat screws(D).
12. Secure the upper part of grasper(H) with the anchor screw(I), then screw together the two parts of the grasper(H).
13. Insert 3pcs G9 LED bulbs(F) to the lamp-holder of lamp fixture body(E).
14. Screw 3pcs glass shades(G) into the lamp fixture body(E).
15. After finish the installation, turn on the power.