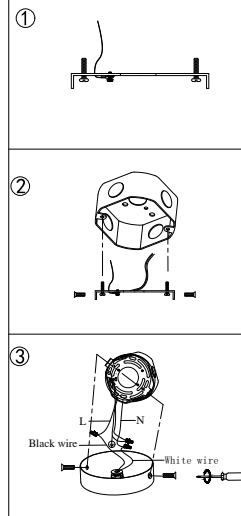
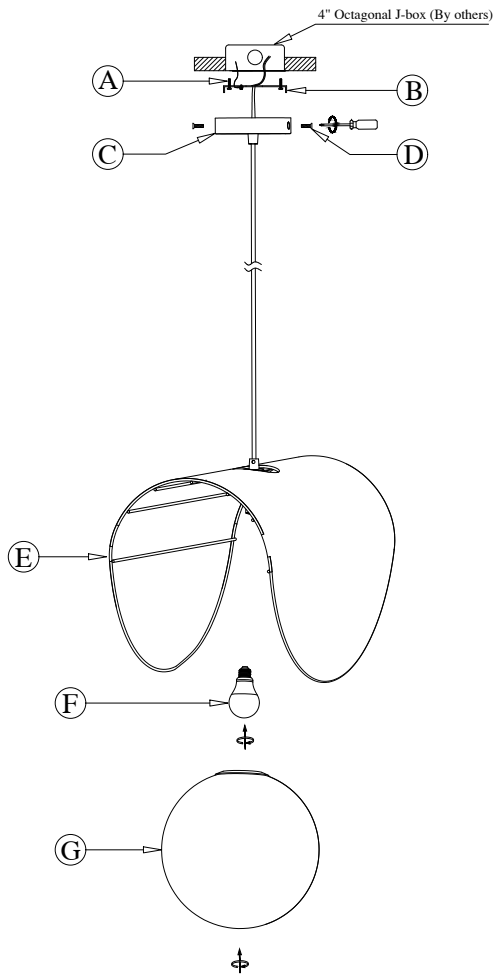


DIAGRAM OF INSTALLATION STRUCTURE

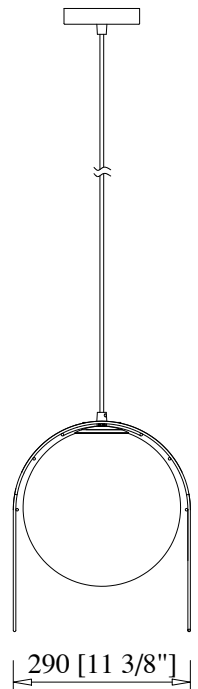
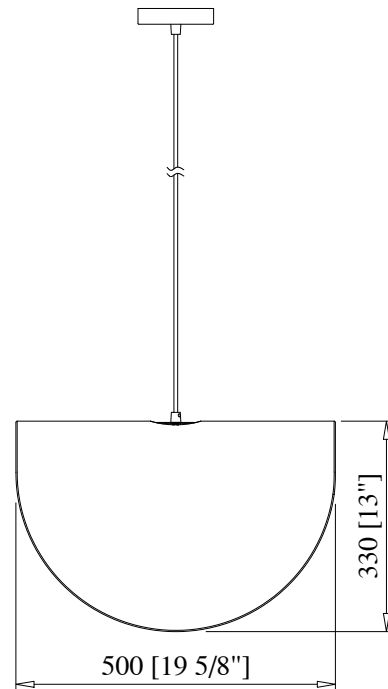
SKU No. :CE1009208

Product Size: L19.7"*W11.4"*H85" (Max)

Light Source: B10/B11 E26 LED Bulb



Ø120 [4 3/4"]



(A) Mounting Screw (2×)

(B) Mounting Plate

(C) Canopy

(D) Flat screw (2×)

(E) Lamp Fixture Body

(F) B10/B11 E26 LED Bulb
(By others)

(G) Glass Shade

Installation instruction

1. Turn off the power.
2. Unpack and take out the fixture/accessories.
3. Dismantle the mounting plate subassembly as picture (1) from the lamp fixture body(E), then install the mounting plate(B) to J-Box with the mounting screws(A).
4. Adjust the fixture's cable to the desired length.
5. Take out the main power supply's wires and ground wire from the J-box.
6. Connect the fixture to a suitable ground in accordance with local electrical codes.
7. Connect the White wire to the neutral power line wire with a wire nut.
8. Connect the Black wire to the hot power line wire with a wire nut.
9. Neatly place all wires and wire nut connections inside the J-box.
10. Install the canopy(C) to ceiling with the flat screws(D).
11. Screw a B10/B11 E26 LED bulb(F) into the lamp-holder of lamp fixture body(E).
12. Screw the glass shade(G) into the lamp fixture body(E).
13. After finish the installation, turn on the power.