



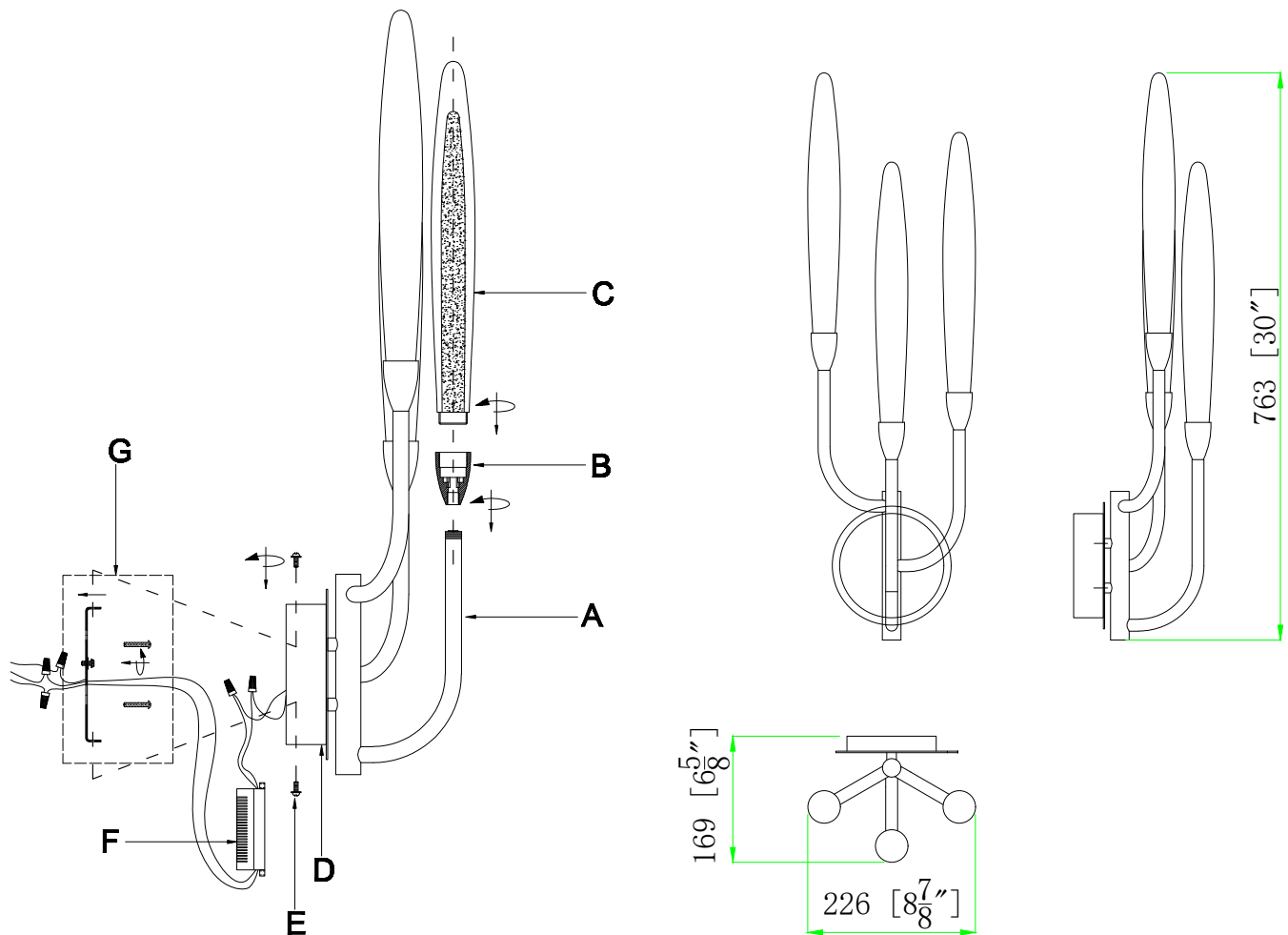
VIDALITE

DIAGRAM OF INSTALLATION STRUCTURE

SKU No.: CE1013056

Product Size:W8 7/8"*H30"*Ext6 5/8"

Light Source:LED 3W



- A: Fixture
B: Led lamp holder
C: Crystals
D: Backplate
E: Mounting Screws
F: Led driver
G: Mounting hardware

Installation Instruction

1. Turn off the power.
2. Fasten mounting hardware(G) to junction box with machine screws.
3. Raise the fixture(A) over to the wall and do the wire connection.
4. Tighten mounting screws (E) to secure fixture(A) to wall.
5. Screw the lamp holders (B) onto the arms, then screw crystal(C) into lamp holder(B).
6. After finish the installation, turn on the power.