

## **3G PLATE / WITHOUT LOGO**

---

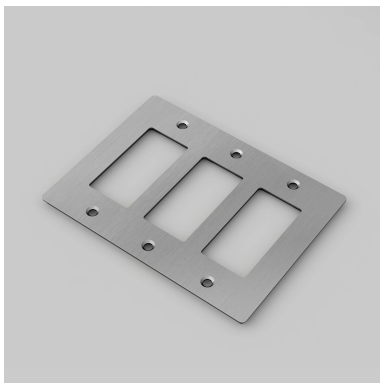
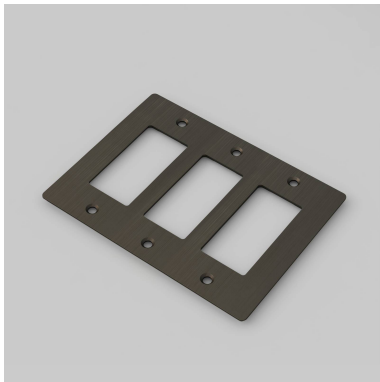
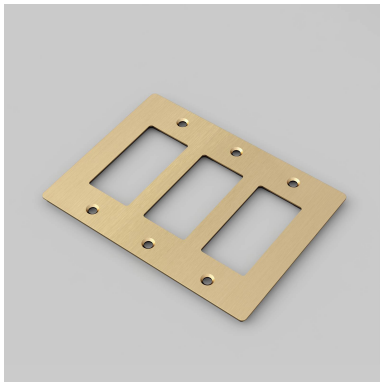
**ACTION: ELECTRICITY WALL PLATE**

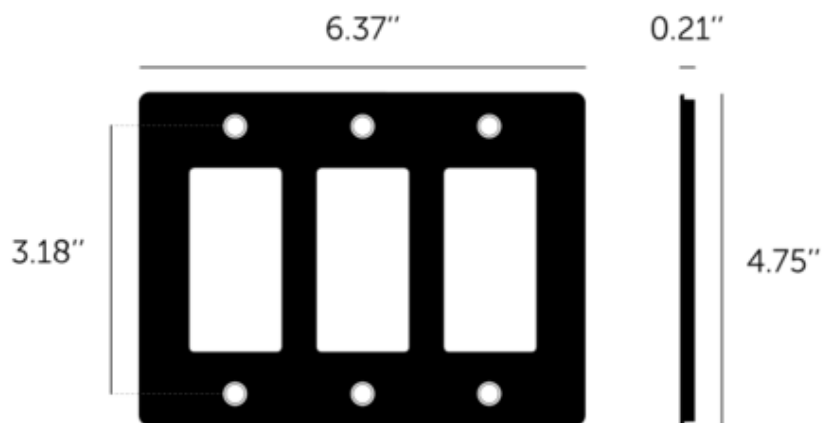
---

**RANGE: WALL PLATES**

---

Decorative cover plate sets in a variety of quality finishes, complete with flush fitting infills. Designed to be completed with range of module inserts to suit a broad spectrum of requirements for lighting control, power supply and device charging. Always finish with our signature details kit & coin screws.





#### SPECIFICATIONS

Our Metal Electricity range has solid stainless steel plates, in our signature white, steel, brass, smoked bronze and black finishes.  
Style: 3G metal plate + infills.  
For use with class 1 modules only / Must be grounded  
Recommended back box:  
Standard flush mounted 3G back box. See dimensions of chosen module(s) for required back box depth.

#### INCLUDED

1 x 3G Wall Plate

#### FINISH & SKU NUMBERS

sku:	finish:	size:
NPL-023587	● black	3g
NPL-053588	● brass	3g
NPL-093589	● smoked bronze	3g
NPL-073590	● steel	3g
NPL-143591	● white	3g

#### CARE INSTRUCTIONS

Wipe with a dry lint free cloth with no loose hairs, avoid using any chemicals. Please note that finishes may age naturally with time and regular use.

#### PLEASE NOTE

DISCLAIMER: Always consult a trade professional when installing this product. Buster + Punch is not responsible for the usage or feasibility of installation requirements. This product is not suitable for damp or wet environments.