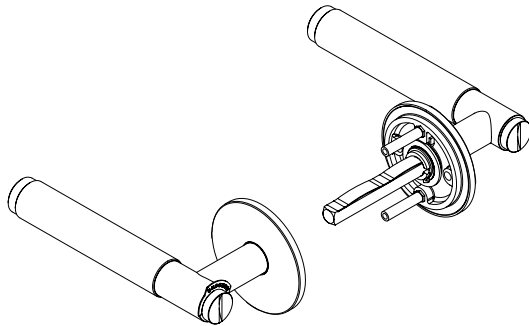




**US DOOR LEVER HANDLE**  
PRE-DRILLED OR 2-1/8" BORE / PASSAGE

**INSTRUCTION MANUAL US**  
MANUEL D'UTILISATION É.-U.  
MANUAL DE INSTRUCCIONES (EE. UU.)



**EN: USE: For residential use. For interior use only.**

**DISCLAIMER: This product is not suitable for commercial use. Always consult a trade professional when installing these products. Buster + Punch is not responsible for the usage or feasibility of installation requirements. This product is not suitable for damp or wet environments.**

FR: UTILISATION : usage résidentiel. Pour l'intérieur seulement.

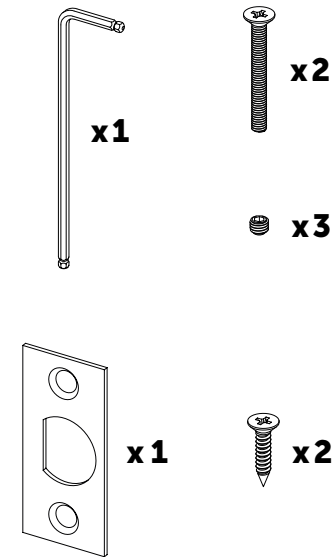
AVERTISSEMENT : ce produit ne convient pas à un usage commercial. Faites toujours appel à un professionnel pour installer ces produits. Buster + Punch n'est pas responsable de l'utilisation ou de la faisabilité des exigences d'installation. Ce produit ne convient pas aux environnements humides ou mouillés.

SP: USO: Para uso doméstico. Solo para uso interno.

AVISO LEGAL: Este producto no es apto para uso comercial. Consulte siempre a un profesional del sector cuando vaya a instalar estos productos. Buster + Punch no se hace responsable de su uso ni de la viabilidad de los requisitos de instalación. Este producto no es adecuado para entornos húmedos o mojados.

**BUSTERANDPUNCH.COM**  
L0080

**CONTENTS**



**EN: LEVER HANDLES, FOR INSTALLATION ONTO A MINIMUM 1-3/8" DOOR.**

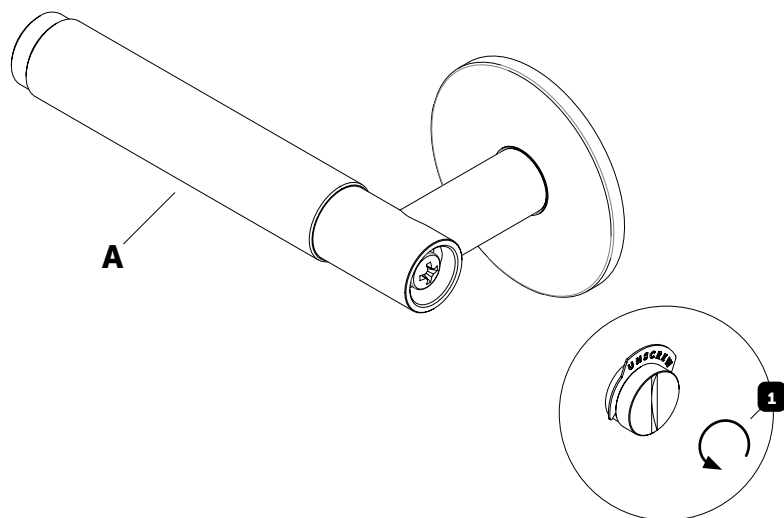
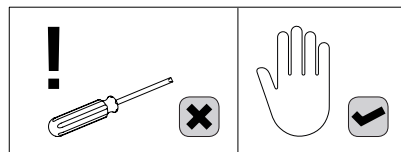
FR: POIGNÉES À LEVIER, POUR INSTALLATION SUR UNE PORTE D'AU MOINS 1-3/8" D'ÉPAISSEUR.

SP: MANDOS DE PALANCA, PARA INSTALAR EN UNA PUERTA DE 1-3/8" COMO MÍNIMO.

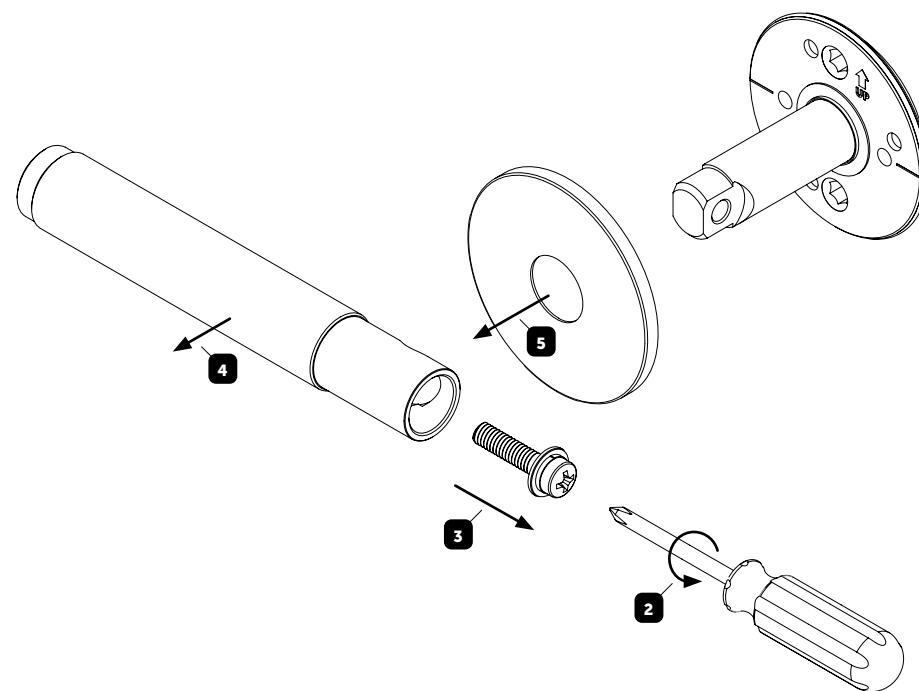
**EN: INCLUDED WITH THE TUBULAR LATCH.**

FR: INCLUS AVEC LE LOQUET TUBULAIRE.  
SP: INCLUIDO CON EL PESTILLO TUBULAR.

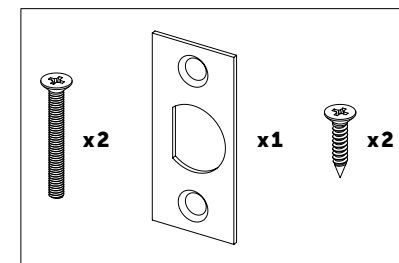
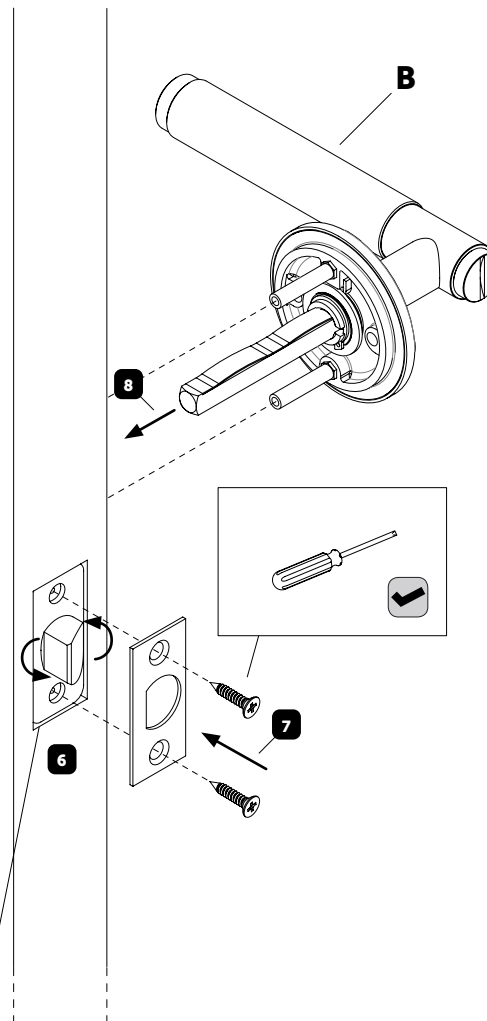
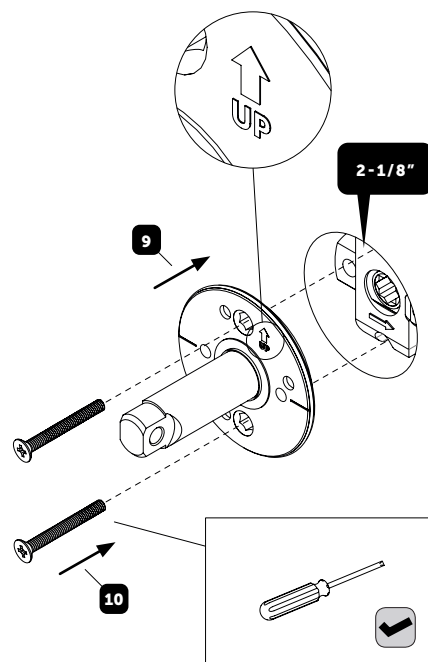
1



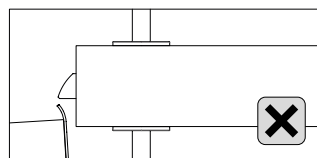
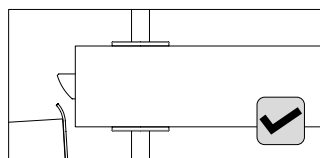
2



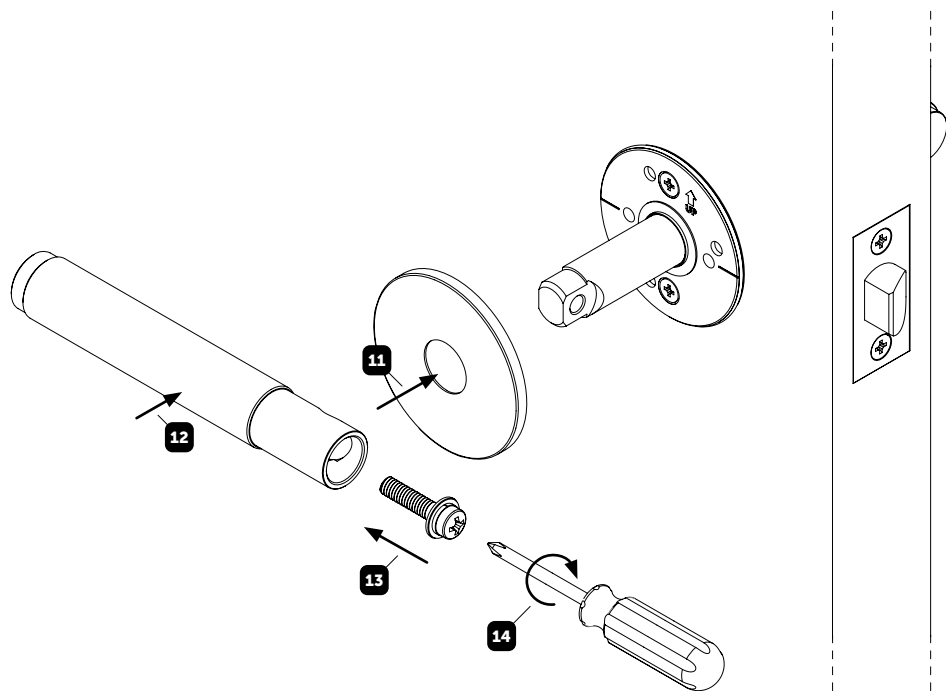
3



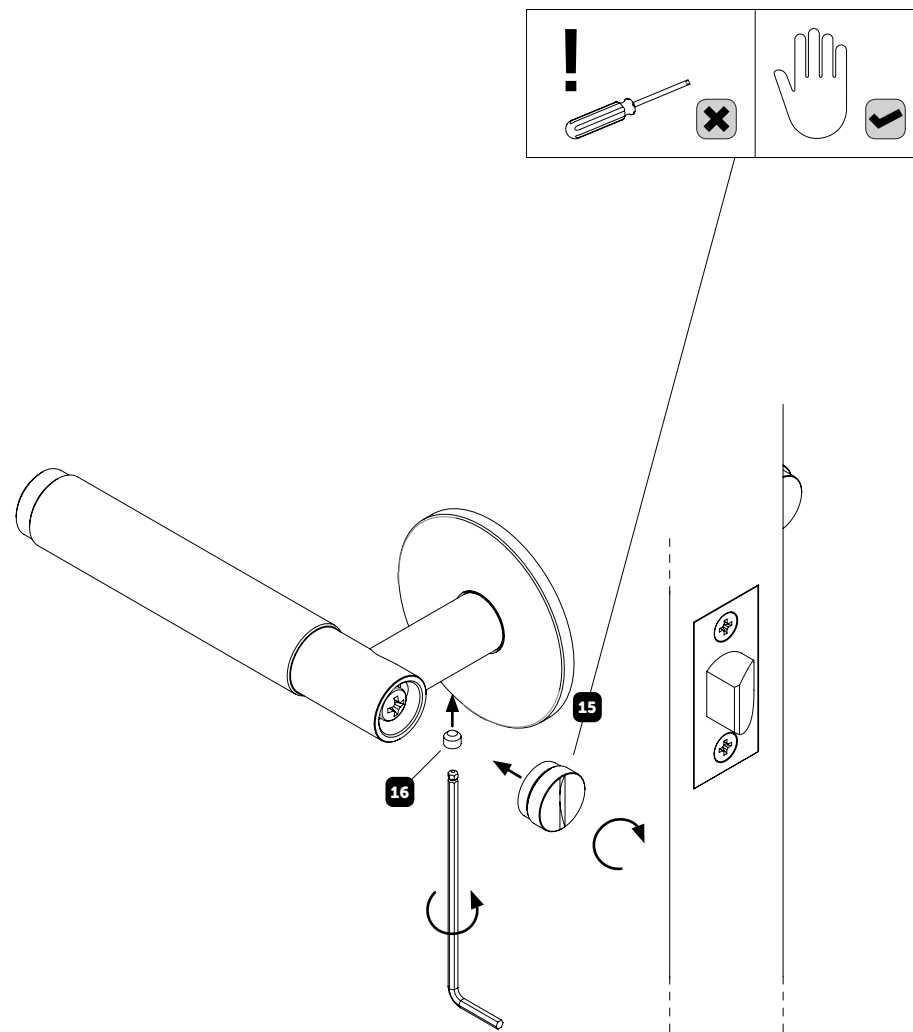
**EN: ROTATE THE LATCH TONGUE TO ENSURE THAT IS IT ORIENTATED CORRECTLY.**  
 FR: FAITES PIVOTER LA LANGUETTE DU LOQUET POUR VOUS ASSURER QU'ELLE EST CORRECTEMENT ORIENTÉE.  
 SP: GIRE LA LENGÜETA DEL PESTILLO PARA ASEGURARSE DE QUE ESTÉ ORIENTADA CORRECTAMENTE.



4



5



 x1

