

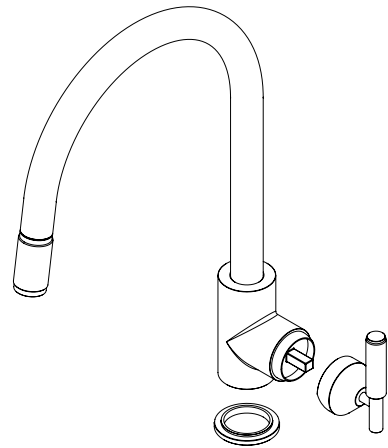


LONDON

## KITCHEN TAP / MIXER WITH PULL OUT SPRAY

### PREPARATION AND INSTALLATION

#### INSTRUCTION MANUAL

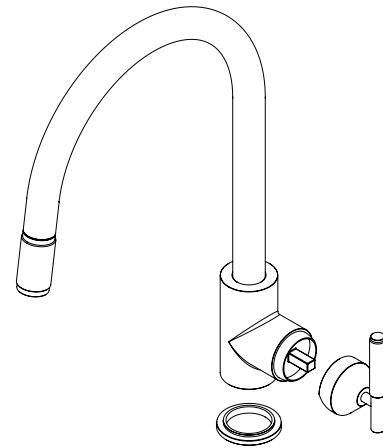


DISCLAIMER: THIS PRODUCT IS NOT  
SUITABLE FOR COMMERCIAL USE.

**BUSTERANDPUNCH.COM**  
L0223 / SIM207450

MINIMUM RECOMMENDED WATER PRESSURE:  
7.25PSI (0.5 BAR)  
MAXIMUM RECOMMENDED WATER PRESSURE:  
72PSI (5 BAR)  
RECOMMENDED HOT WATER TEMPERATURE:  
70°C (158°F)  
RECOMMENDED TEMPERATURE RANGE:  
5 - 60°C (41 - 140°F)

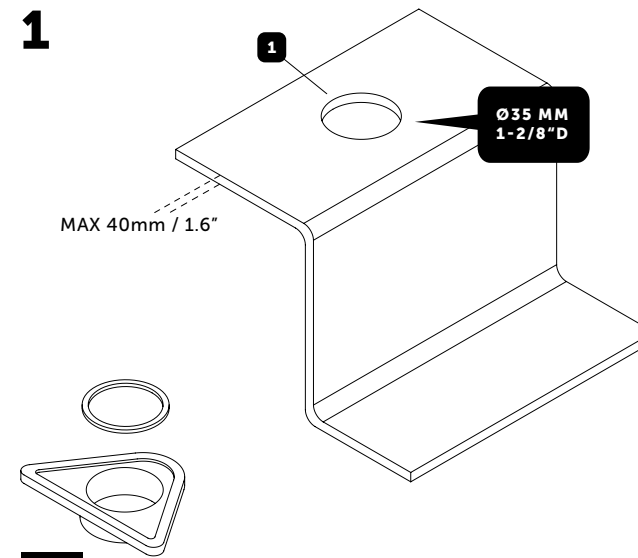
NOTE: EXCEEDING THESE TEMPERATURES OR WATER PRESSURES CAN  
RESULT IN DAMAGE TO THE TAP.  
A PRESSURE REDUCING VALVE MAY BE REQUIRED TO BE FITTED IN HIGH  
WATER PRESSURE SITUATIONS.



NOTE: INSTALLATION INSTRUCTION MANUAL APPLICABLE FOR  
US SINGLE MIXER TAPS SUPPLIED BY BUSTER + PUNCH. PRODUCT  
VARIATIONS COVERED BY THIS INSTRUCTION MANUAL ARE LISTED  
BELOW:

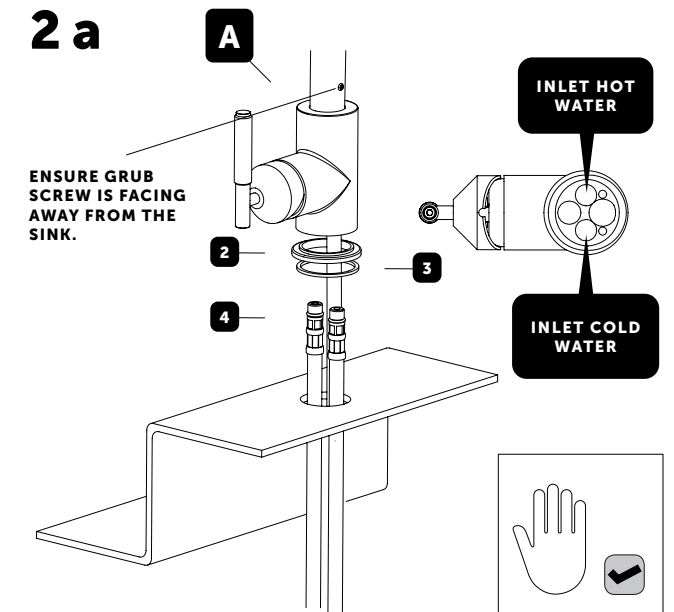
KITCHEN TAP (WARM/COLD) / CROSS / SINGLE MIXER  
KITCHEN TAP (WARM/COLD) / LINEAR / SINGLE MIXER

1



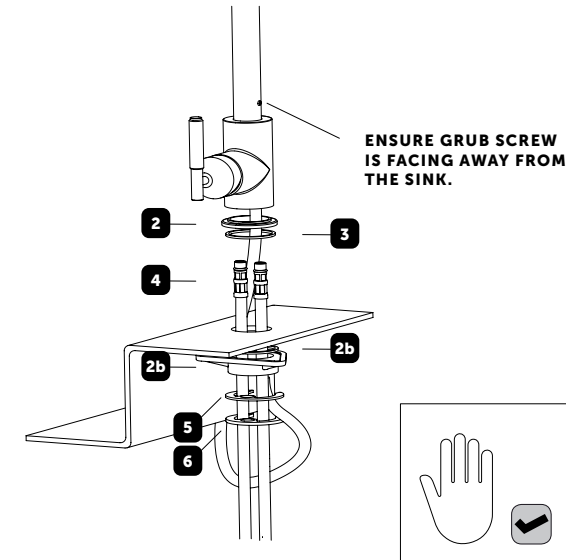
FOR SURFACES <5MM USE THE  
TAP BRACE & O-RING PROVIDED

2 a

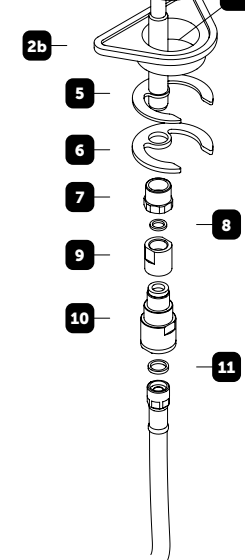


2 b

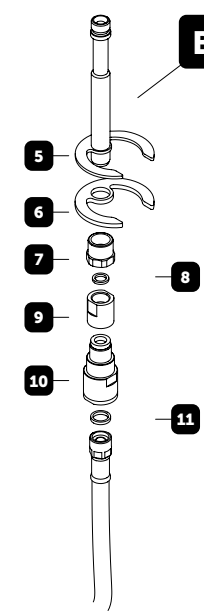
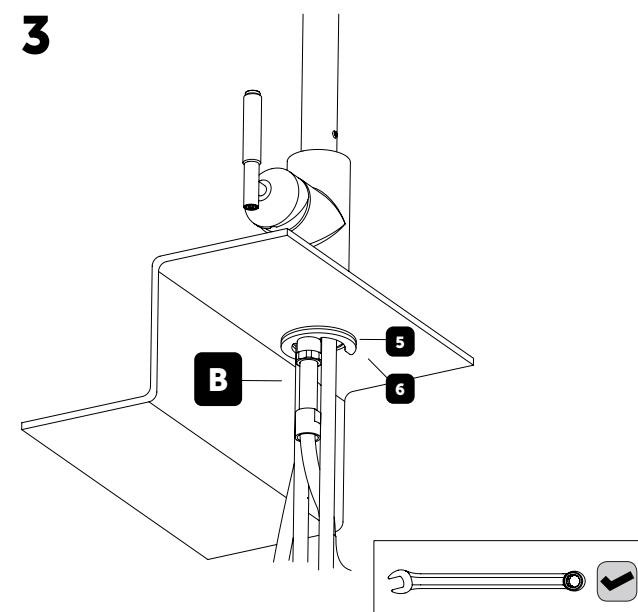
FOR SURFACES <5MM DEPTH



2b



3



### PREPARATION

BEFORE INSTALLING THE NEW MIXER IT IS ESSENTIAL THAT YOU THOROUGHLY  
FLUSH THROUGH THE SUPPLY PIPES IN ORDER TO REMOVE ANY REMAINING  
SWarf, SOLDER OR OTHER IMPURITIES.

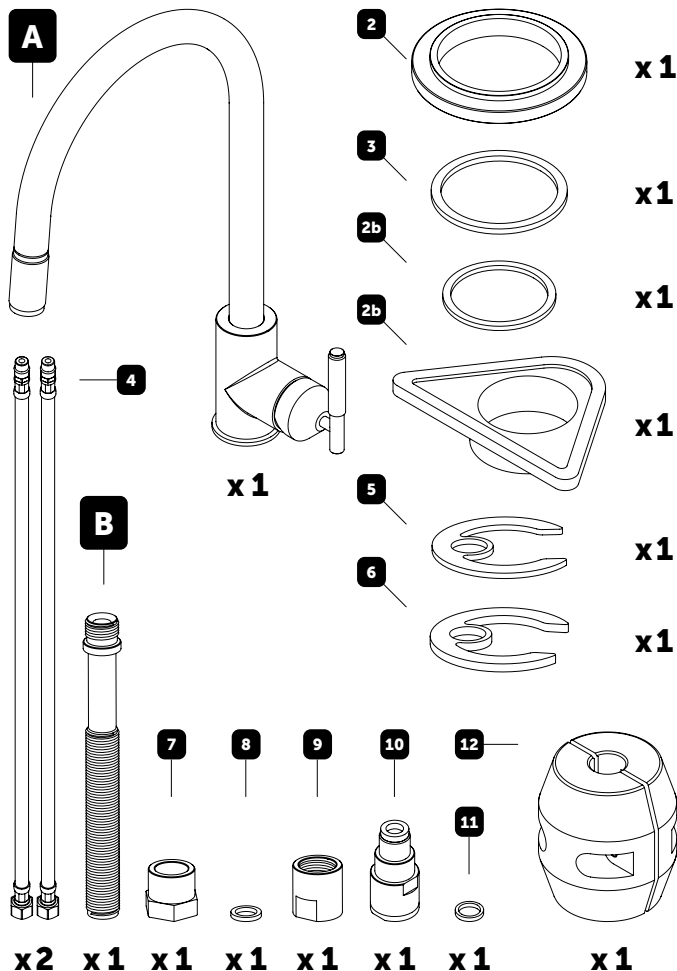
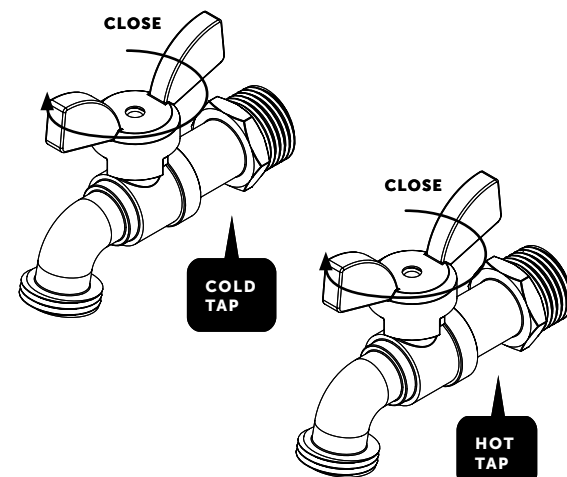
FAILURE TO CARRY OUT THIS SIMPLE PROCEDURE COULD CAUSE PROBLEMS OR  
DAMAGE TO THE WORKINGS OF THE MIXER.

HAVING FIRST CHECKED ALL NEW CONNECTIONS, TURN ON THE MAINS STOP-  
COCK, CLOSE ALL TAPS EXCEPT THE NEW MIXER AND AS THE SYSTEM STARTS  
TO REFILL CHECK FOR LEAKS.

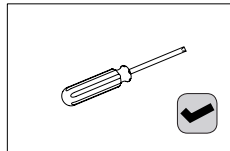
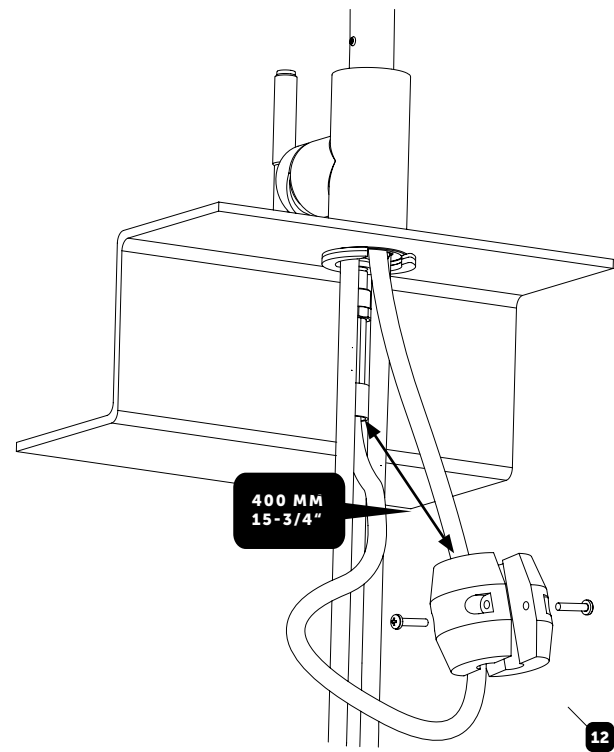
ONCE YOU HAVE SATISFIED YOURSELF THAT THERE ARE NO LEAKS, SWITCH ON  
THE WATER HEATING.

FIRST SHUT OFF YOUR WATER HEATING SYSTEM THEN, WITH YOUR MAINS  
STOPCOCK CLOSED, OPEN THE LOWEST HOT AND COLD TAPS IN THE HOUSE  
AND ALLOW TO RUN UNTIL THE COLD STORAGE TANK AND PIPES ARE EMPTY  
(THE HOT WATER STORAGE CYLINDER ALWAYS REMAINS FULL).

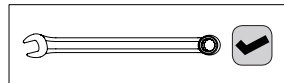
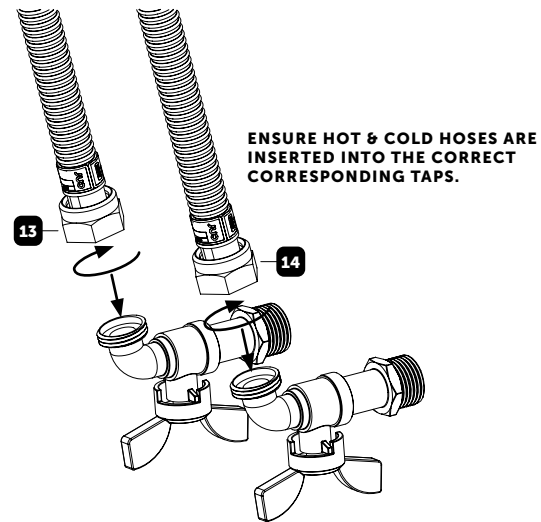
DISCLAIMER: PLEASE CONTACT YOUR LOCAL PLUMBER WHEN INSTALLING.



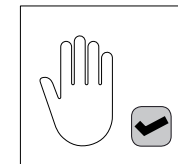
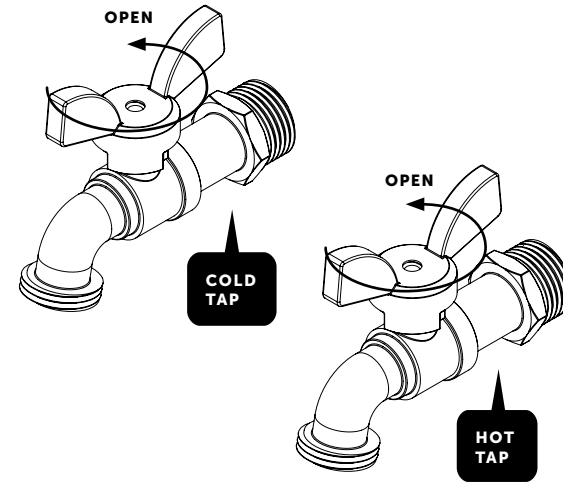
4



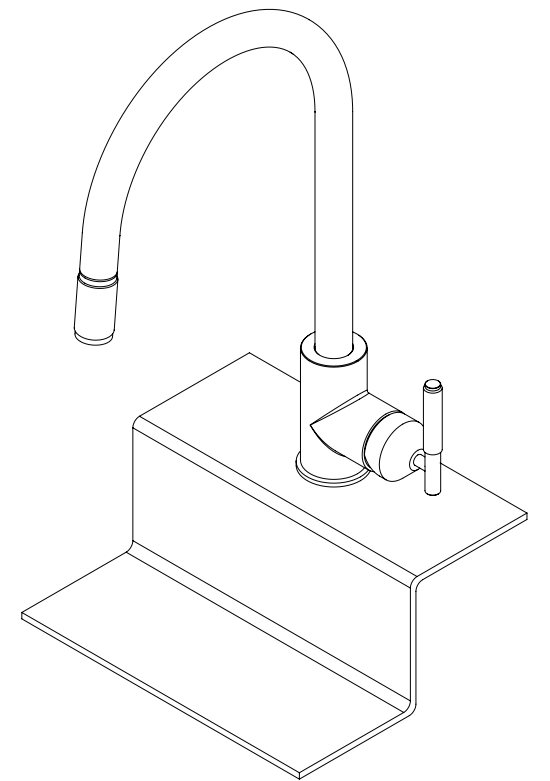
5



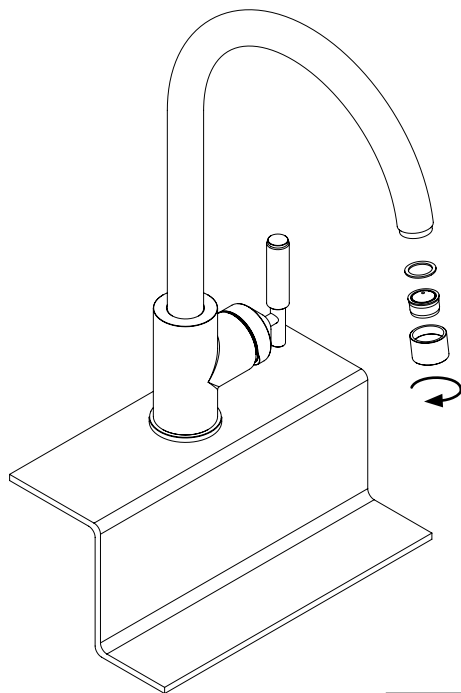
6



7



## AERATOR MAINTENANCE



RECOMMENDED TO BE CLEANED AT LEAST  
ONCE A MONTH

**NOTE: IF THERE IS A BUILDUP OF  
LIMESCALE IT MAY BE WORTH REPLACING**

