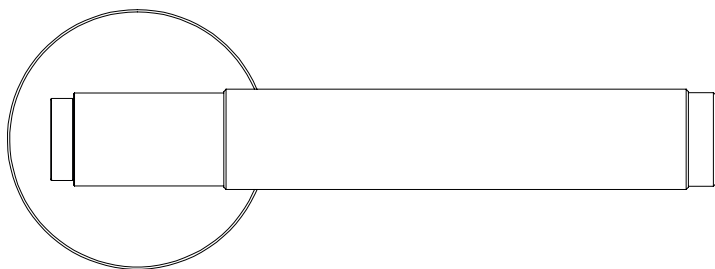




**FIXED DOOR HANDLE**  
CROSS KNURL INSTALLATION

**INSTRUCTION MANUAL EN**  
MANUEL D'UTILISATION É.-U.  
MANUAL DE INSTRUCCIONES (EE. UU.)



**EN: FOR RESIDENTIAL USE.**  
**INTERIOR DOORS ONLY.**

**DISCLAIMER: THIS  
PRODUCT IS NOT SUITABLE  
FOR COMMERCIAL USE.**  
**ALWAYS CONSULT A  
TRADE PROFESSIONAL  
WHEN INSTALLING THESE  
PRODUCTS. BUSTER + PUNCH  
IS NOT RESPONSIBLE FOR THE  
USAGE OR FEASIBILITY OF  
INSTALLATION REQUIREMENTS.**  
**THIS PRODUCT IS NOT  
SUITABLE FOR DAMP OR WET  
ENVIRONMENTS.**

**FR: UTILISATION : USAGE  
RÉSIDENTIEL. POUR L'INTÉRIEUR  
SEULEMENT.**

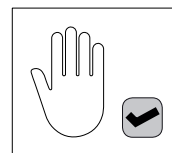
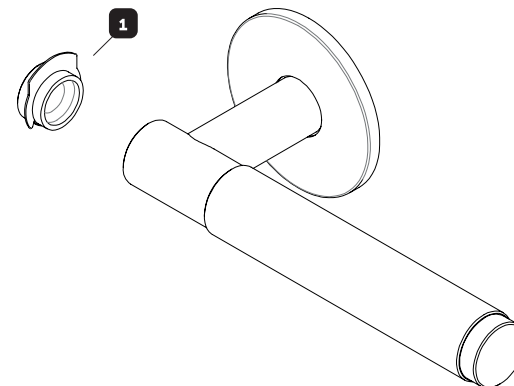
**AVERTISSEMENT : CE PRODUIT  
NE CONVIENT PAS À UN USAGE  
COMMERCIAL. FAITES TOUJOURS  
APPEL À UN PROFESSIONNEL  
POUR INSTALLER CES PRODUITS.**  
BUSTER + PUNCH N'EST PAS  
RESPONSABLE DE L'UTILISATION  
OU DE LA FAISABILITÉ DES  
EXIGENCES D'INSTALLATION. CE  
PRODUIT NE CONVIENT PAS AUX  
ENVIRONNEMENTS HUMIDES OU  
MOUILLÉS.

**SP: USO: PARA USO DOMÉSTICO.**  
**SOLO PARA USO INTERNO.**

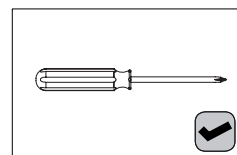
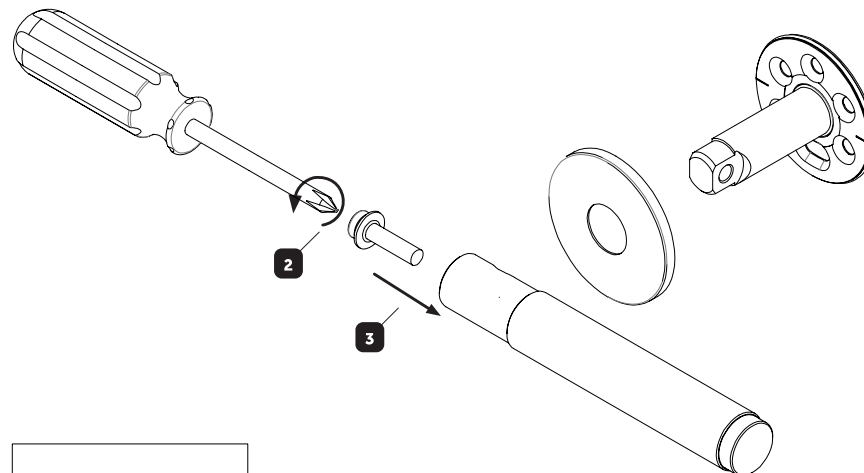
**AVISO LEGAL: ESTE PRODUCTO  
NO ES APTO PARA USO  
COMERCIAL. CONSULTE SIEMPRE  
A UN PROFESIONAL DEL SECTOR  
CUANDO VAYA A INSTALAR ESTOS  
PRODUCTOS. BUSTER + PUNCH  
NO SE HACE RESPONSABLE DE SU  
USO NI DE LA VIABILIDAD DE LOS  
REQUISITOS DE INSTALACIÓN.**  
ESTE PRODUCTO NO ES  
ADECUADO PARA ENTORNOS  
HÚMEDOS O MOJADOS.

**BUSTERANDPUNCH.COM**  
L0220

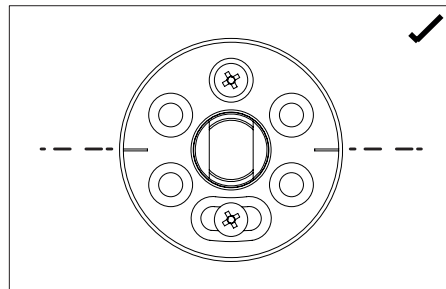
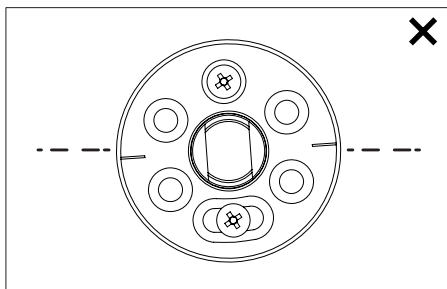
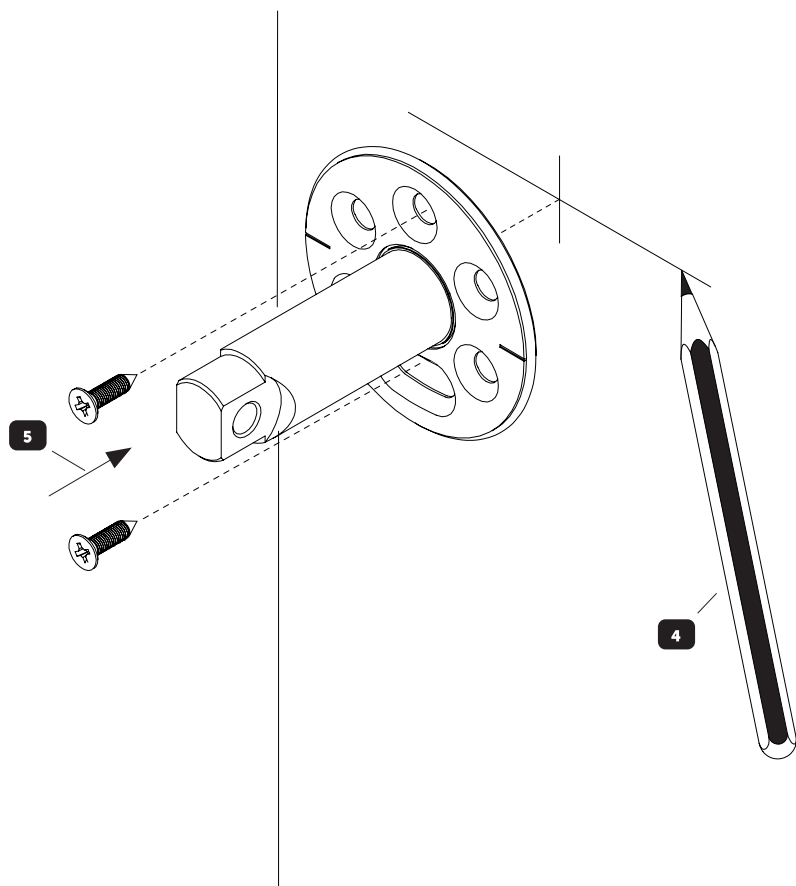
**1**



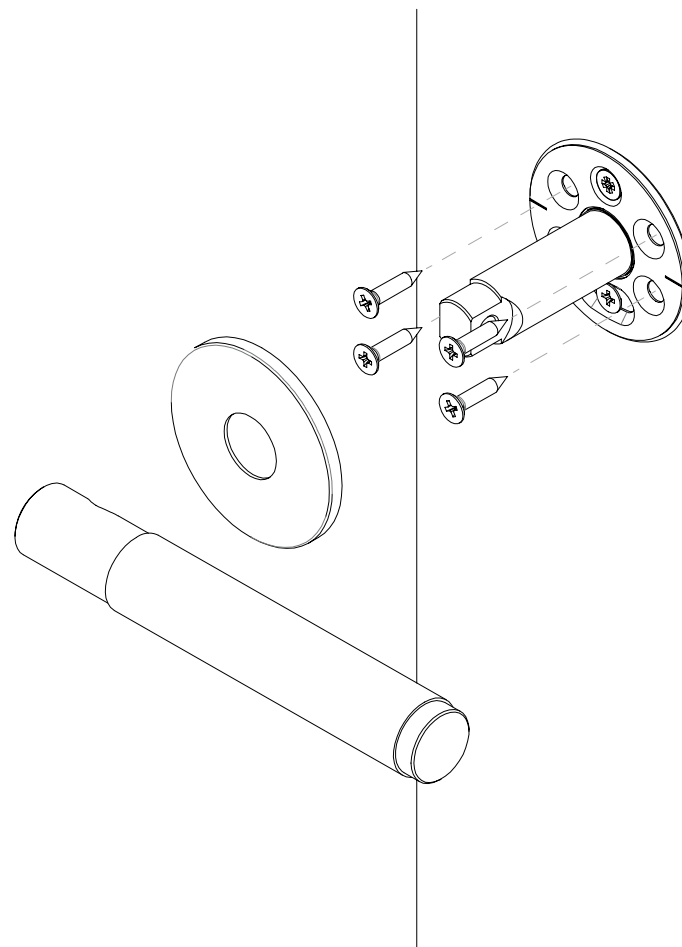
**2**



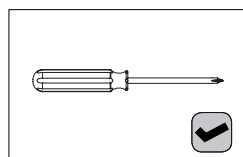
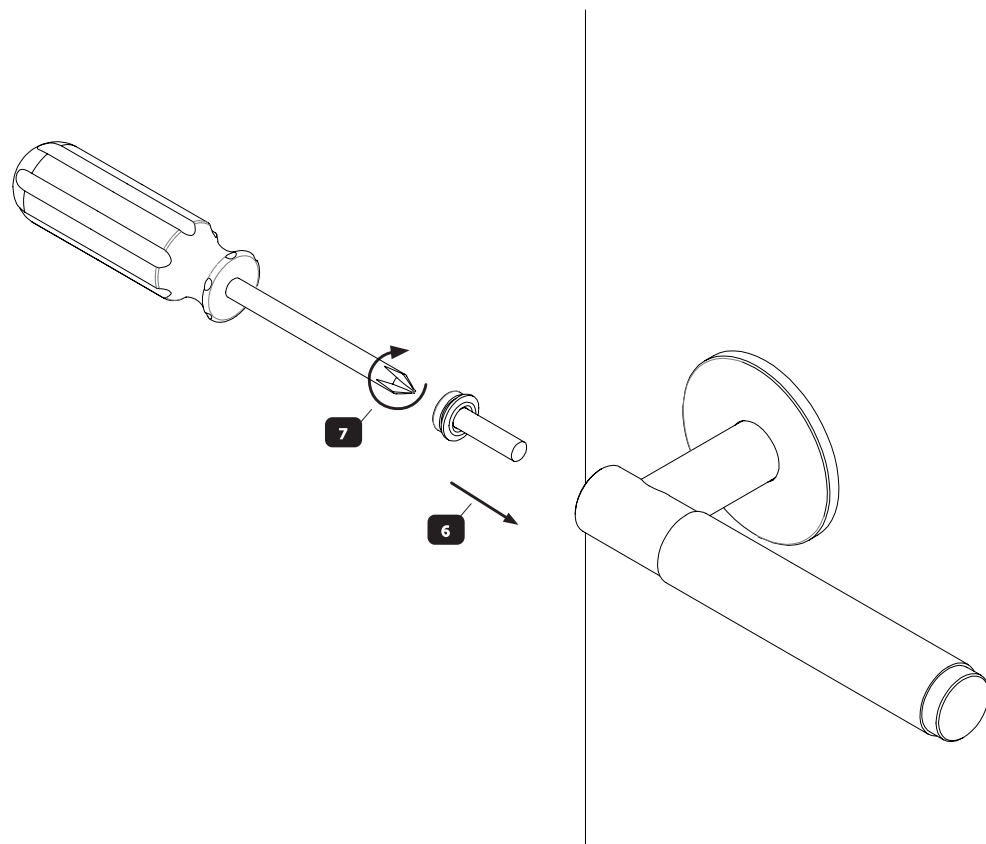
3



4



5



6

