

Light efficiency:

90 Lumen/Watt

Light quality:

CRI: 93.4

Color temperature:

2671 K

Output: 1080 lm

Peak: 1332 cd

Power: 12.0 W

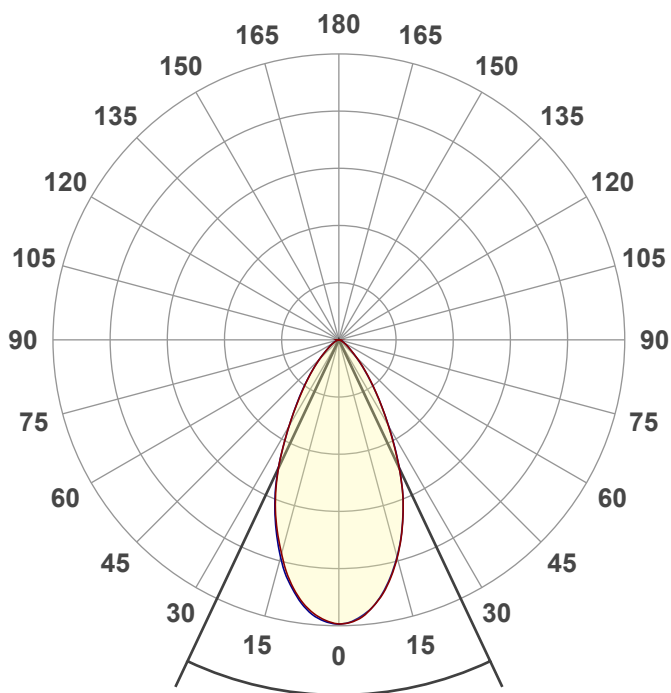
PF: 0.97



GX-10-11LM-27K-90-50D-120-ELV

Date and time:

11/28/2022 11:08:00 AM



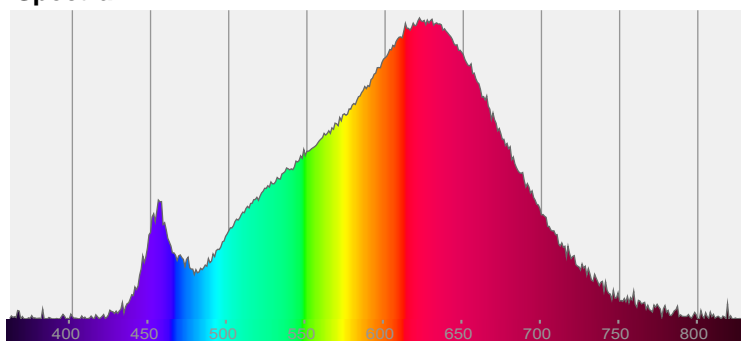
Beam angle

50.4°

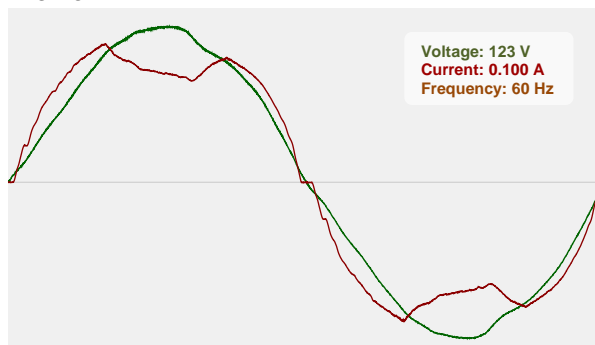


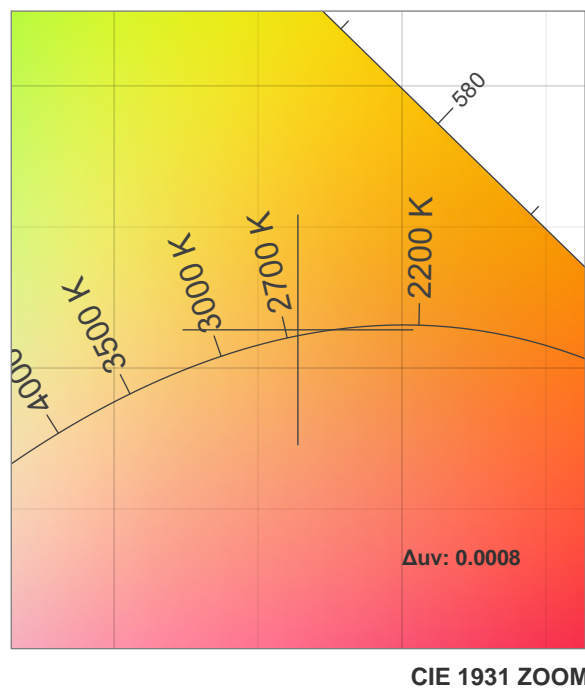
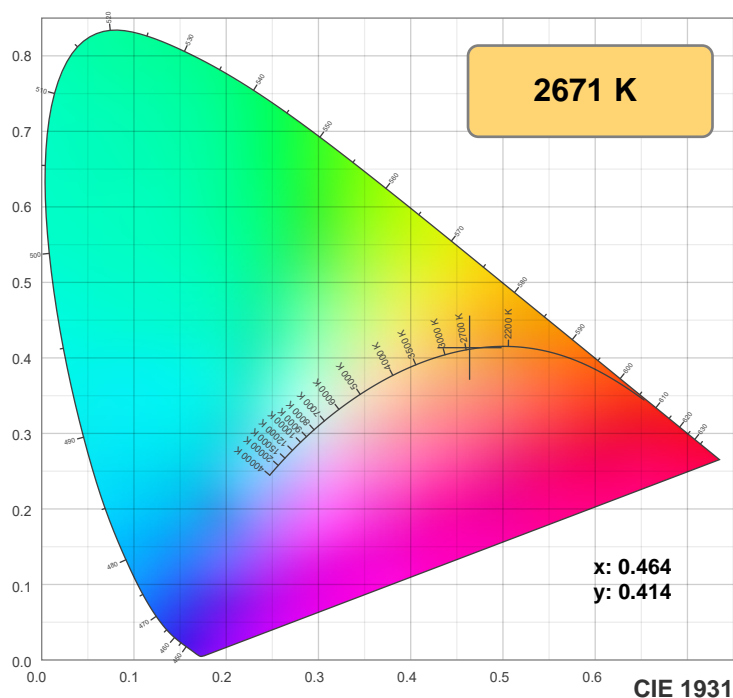
CIE 1931
x: 0.464
y: 0.414

Spectra

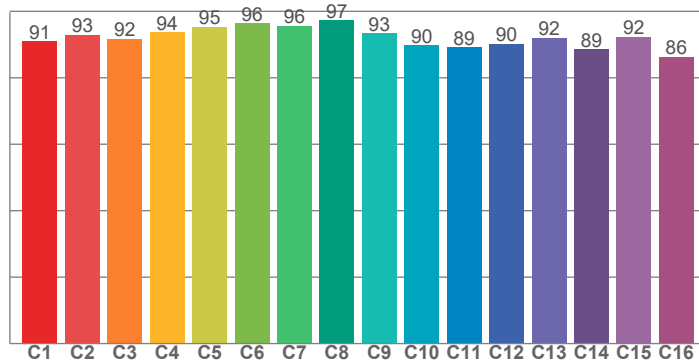


Power

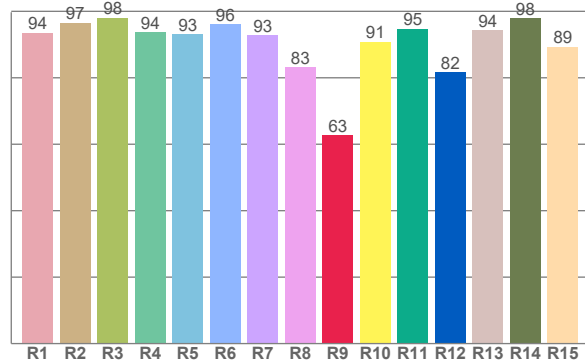




TM30: 92.0



CRI: 93.4 (R1-R8)



CRI R values, only R1-R8 are used to calculate final CRI value

R1	R2	R3	R4	R5	R6	R7	R8	R9	R10	R11	R12	R13	R14	R15
93.6	96.6	98.1	93.7	93.0	96.2	92.7	83.1	62.7	90.9	94.8	81.7	94.4	98.0	89.3

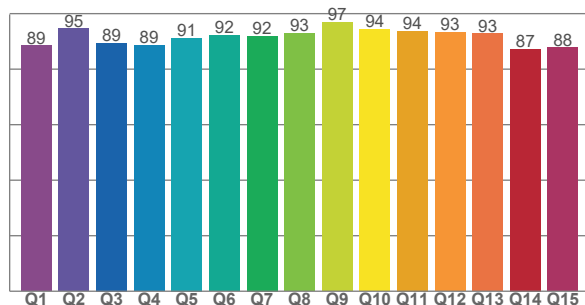
TM30 C values, 16 binned values out of total of 99 C values

C1	C2	C3	C4	C5	C6	C7	C8	C9	C10	C11	C12	C13	C14	C15	C16
91.0	92.9	91.7	93.6	95.3	96.4	95.6	97.3	93.4	89.7	89.1	90.2	91.9	88.5	92.4	86.2

CQS Q values

Q1	Q2	Q3	Q4	Q5	Q6	Q7	Q8	Q9	Q10	Q11	Q12	Q13	Q14	Q15
88.5	94.7	89.4	88.6	91.2	92.2	91.9	92.9	96.9	94.3	93.7	93.3	92.8	87.3	87.8

CQS: 91.1



Color parameters

Color temperature	Color rendering index	Red component	Color fidelity	Color gamut	Color quality scale	Color coordinate cie 1931	Color coordinate cie 1931	Color coordinate	Color coordinate	Color deviation from black body
CCT	CRI	CRI R9	TM30 Rf	TM30 Rg	CQS	x	y	u	v	Δuv
2671 K	93.4	62.7	92.0	98.5	91.1	0.464	0.414	0.264	0.353	0.0008

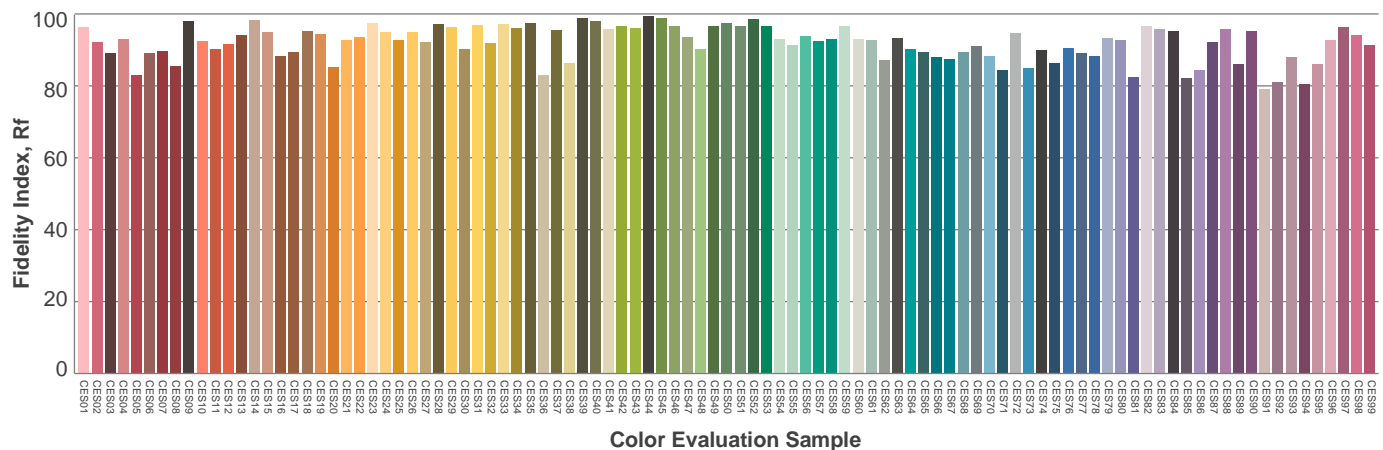
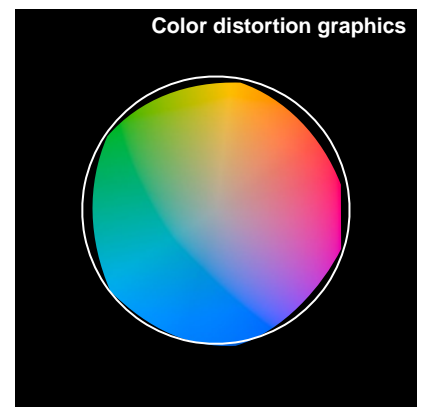
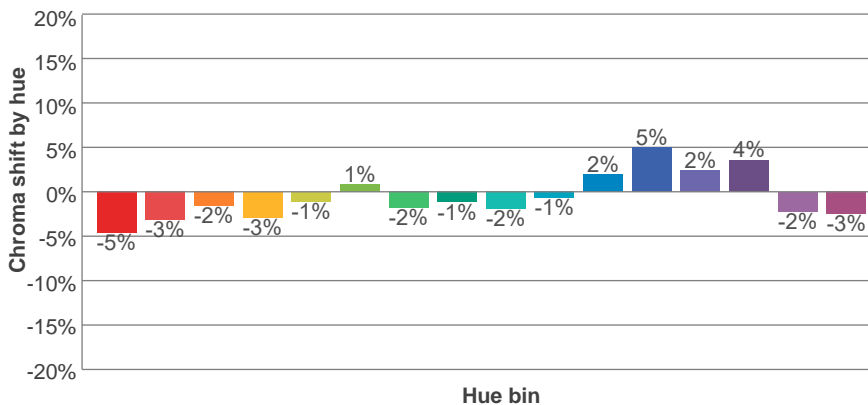
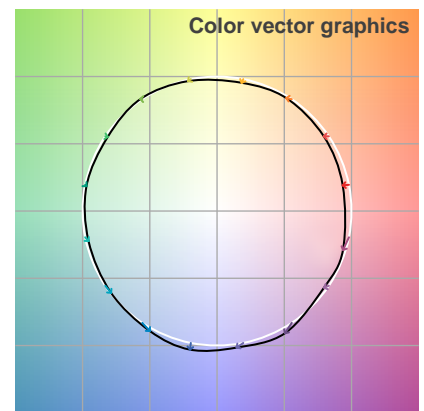
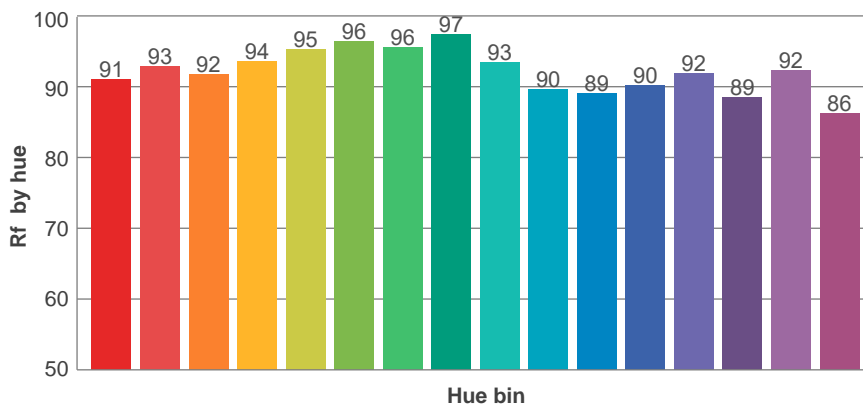
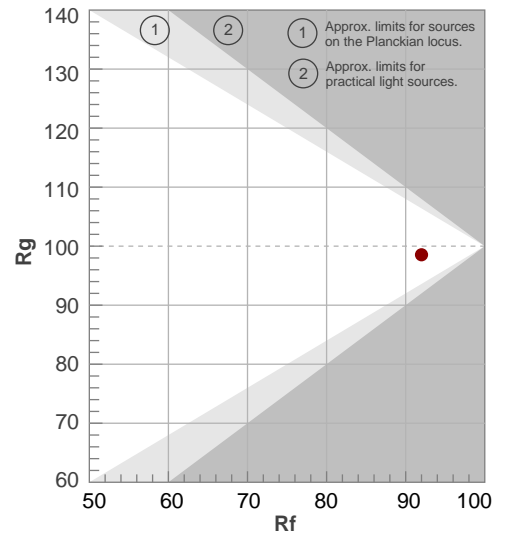
Rf 92.0

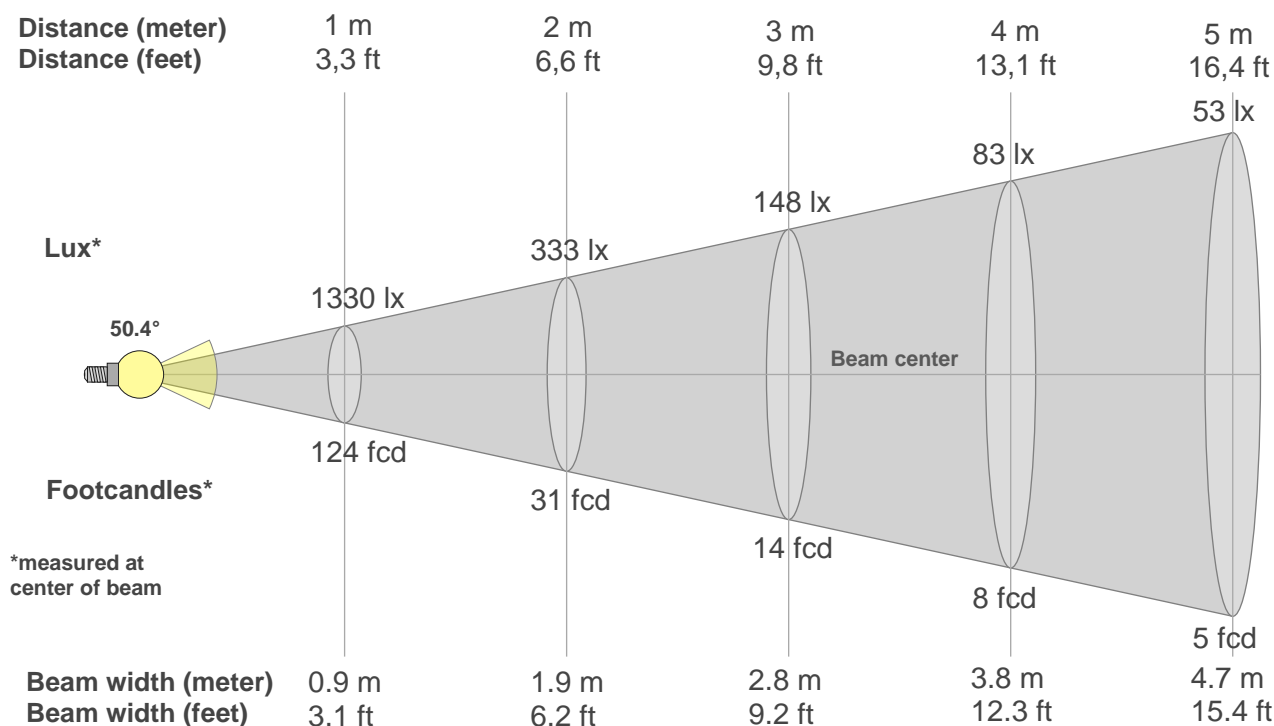
Fidelity index Rf

Rg 98.5

Gammut index Rg

Hue Bin	R _f	Graphic shifts (%)	
		Chroma	Hue
1	91	-5%	0%
2	93	-3%	2%
3	92	-2%	4%
4	94	-3%	1%
5	95	-1%	2%
6	96	1%	1%
7	96	-2%	-1%
8	97	-1%	1%
9	93	-2%	3%
10	90	-1%	7%
11	89	2%	8%
12	90	5%	0%
13	92	2%	-6%
14	89	4%	-8%
15	92	-2%	-3%
16	86	-3%	-10%





Beam intensities from 1-20m

1m	2m	3m	4m	5m	6m	7m	8m	9m	10m	11m	12m	13m	14m	15m	16m	17m	18m	19m	20m
3.3ft	6.6ft	9.8ft	13.1ft	16.4ft	19.7ft	23ft	26.2ft	29.5ft	32.8ft	36.1ft	39.4ft	42.7ft	45.9ft	49.2ft	52.5ft	55.8ft	59.1ft	62.3ft	65.6ft
1330lx	333lx	148lx	83lx	53lx	37lx	27lx	21lx	16lx	13lx	11lx	9lx	8lx	7lx	6lx	5lx	5lx	4lx	4lx	3lx
123.6fcd	30.9fcd	13.7fcd	7.7fcd	4.9fcd	3.4fcd	2.5fcd	1.9fcd	1.5fcd	1.2fcd	1fcd	0.9fcd	0.7fcd	0.6fcd	0.5fcd	0.5fcd	0.4fcd	0.4fcd	0.3fcd	0.3fcd

Intensities in 0° c-plane

0°	2°	4°	6°	8°	10°	12°	14°	16°	18°	20°	22°	24°	26°	28°	30°	32°	34°	36°	38°
1330	1326	1310	1283	1246	1203	1149	1088	1023	953	879	802	717	630	543	464	397	337	284	237
100%	100%	98%	96%	94%	90%	86%	82%	77%	72%	66%	60%	54%	47%	41%	35%	30%	25%	21%	18%

Intensities in 90° c-plane

0°	2°	4°	6°	8°	10°	12°	14°	16°	18°	20°	22°	24°	26°	28°	30°	32°	34°	36°	38°
1330	1325	1306	1279	1244	1199	1144	1084	1019	950	877	802	718	632	547	467	396	334	279	231
100%	100%	98%	96%	94%	90%	86%	81%	77%	71%	66%	60%	54%	47%	41%	35%	30%	25%	21%	17%

Intensities in 180° c-plane

0°	2°	4°	6°	8°	10°	12°	14°	16°	18°	20°	22°	24°	26°	28°	30°	32°	34°	36°	38°
1330	1320	1302	1275	1239	1192	1136	1072	1003	936	866	792	713	631	546	469	398	337	285	243
100%	99%	98%	96%	93%	90%	85%	81%	75%	70%	65%	60%	54%	47%	41%	35%	30%	25%	21%	18%

Intensities in 270° c-plane

0°	2°	4°	6°	8°	10°	12°	14°	16°	18°	20°	22°	24°	26°	28°	30°	32°	34°	36°	38°
1330	1324	1309	1285	1249	1200	1148	1088	1020	948	874	798	718	632	544	467	400	341	290	245
100%	100%	98%	97%	94%	90%	86%	82%	77%	71%	66%	60%	54%	47%	41%	35%	30%	26%	22%	18%

Beam angle 50°	Field angle 10°	Cutoff angle 2,5%	Intensity ratio in 120° cone	Intensity ratio in 90° cone
50.4°	88.5°	117.4°	97.6%	90.1%