

Light efficiency:

69 Lumen/Watt

Light quality:

CRI: 93.4

Color temperature:

2677 K

Output: 834 lm

Peak: 1325 cd

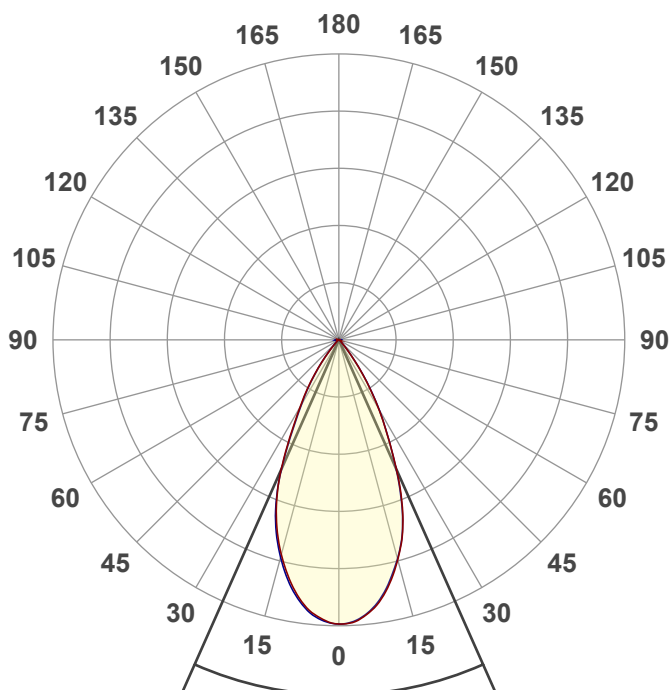
Power: 12.0 W

PF: 0.97



GX-10-11LM-27K-90-50D-120-
ELV_SNOOT

Date and time:
11/28/2022 4:11:16 PM



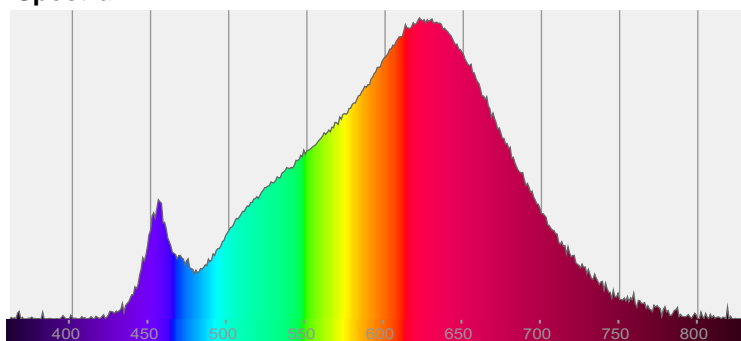
Beam angle

47.9°

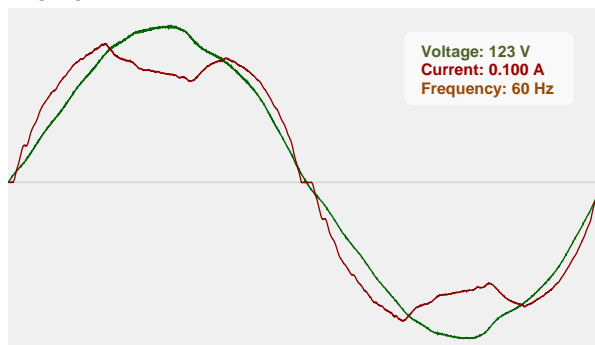


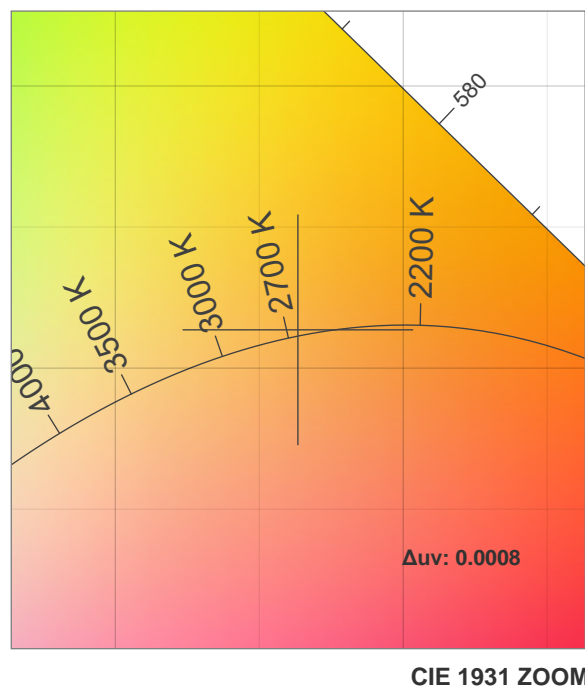
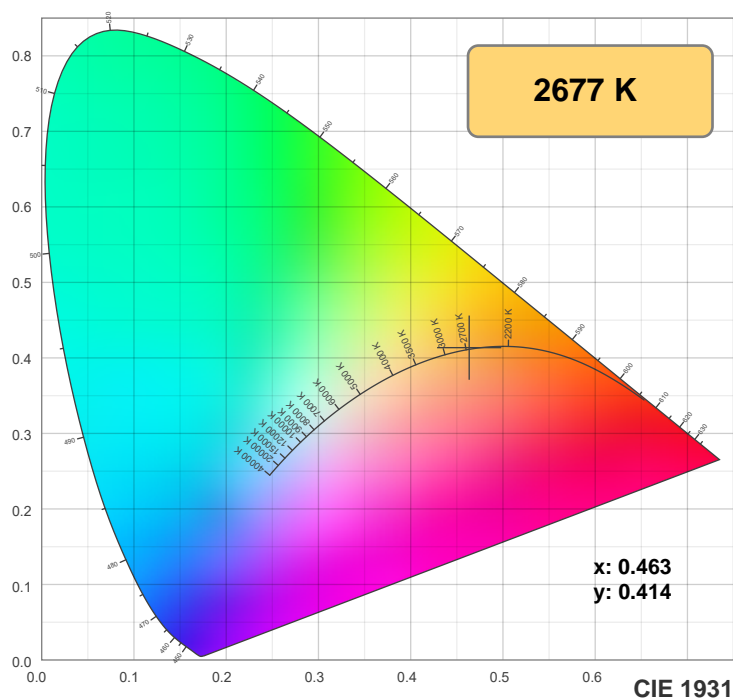
CIE 1931
x: 0.463
y: 0.414

Spectra

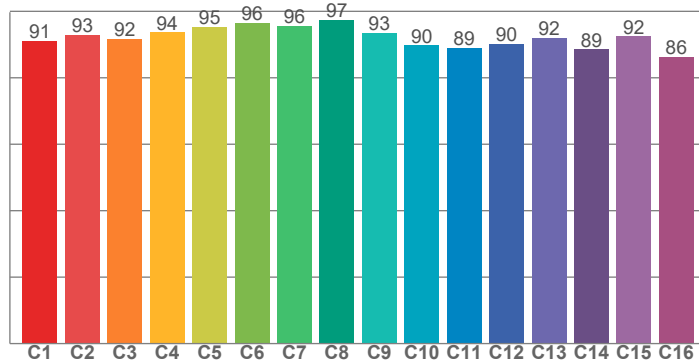


Power

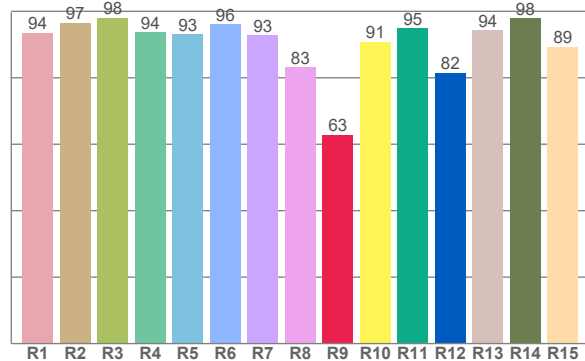




TM30: 92.0



CRI: 93.4 (R1-R8)



CRI R values, only R1-R8 are used to calculate final CRI value

R1	R2	R3	R4	R5	R6	R7	R8	R9	R10	R11	R12	R13	R14	R15
93.6	96.5	98.0	93.8	93.0	96.2	92.8	83.2	62.9	90.8	94.8	81.5	94.4	98.0	89.3

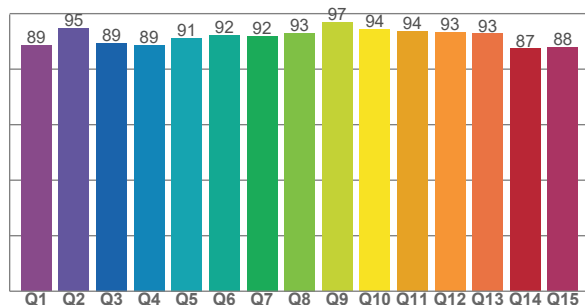
TM30 C values, 16 binned values out of total of 99 C values

C1	C2	C3	C4	C5	C6	C7	C8	C9	C10	C11	C12	C13	C14	C15	C16
91.1	92.9	91.8	93.6	95.2	96.5	95.6	97.4	93.4	89.7	89.1	90.2	92.0	88.6	92.4	86.3

CQS Q values

Q1	Q2	Q3	Q4	Q5	Q6	Q7	Q8	Q9	Q10	Q11	Q12	Q13	Q14	Q15
88.6	94.7	89.4	88.6	91.2	92.2	92.0	93.0	96.9	94.4	93.7	93.3	92.8	87.4	87.9

CQS: 91.1



Color parameters

Color temperature	Color rendering index	Red component	Color fidelity	Color gamut	Color quality scale	Color coordinate cie 1931	Color coordinate cie 1931	Color coordinate	Color coordinate	Color deviation from black body
CCT	CRI	CRI R9	TM30 Rf	TM30 Rg	CQS	x	y	u	v	Δuv
2677 K	93.4	62.9	92.0	98.6	91.1	0.463	0.414	0.263	0.353	0.0008

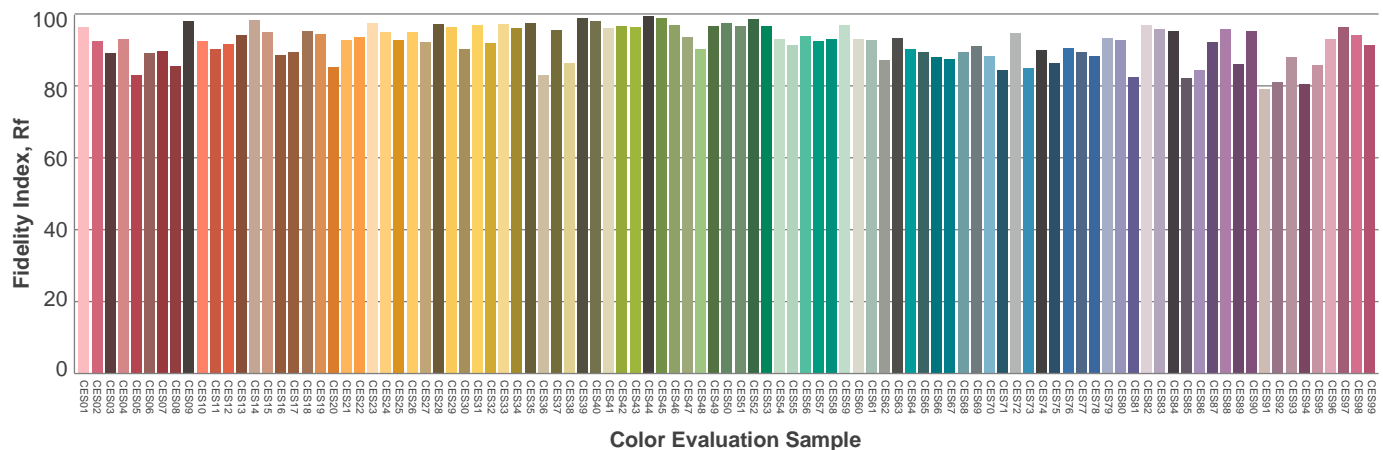
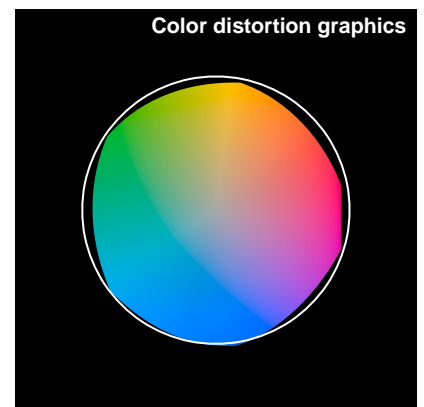
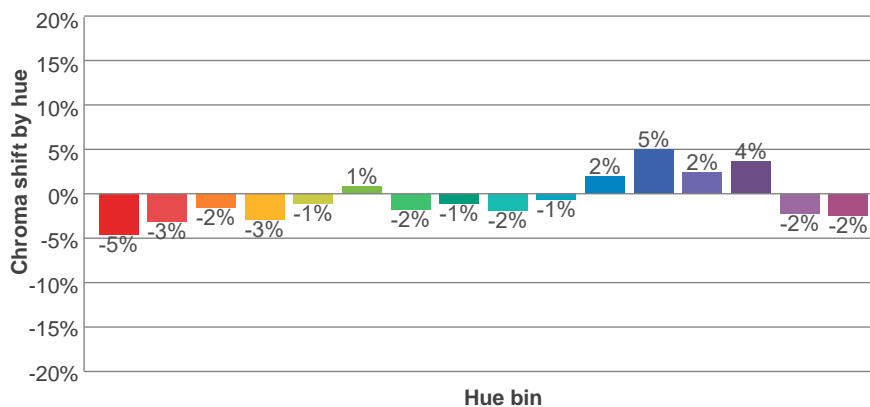
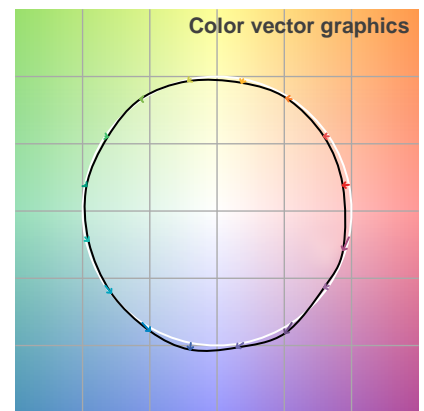
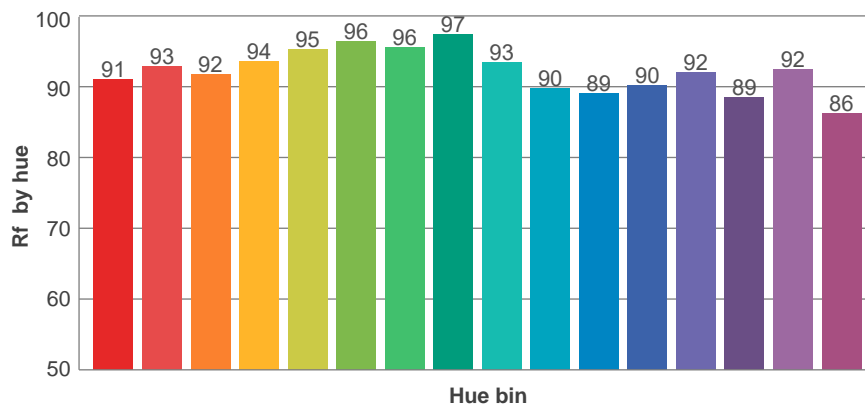
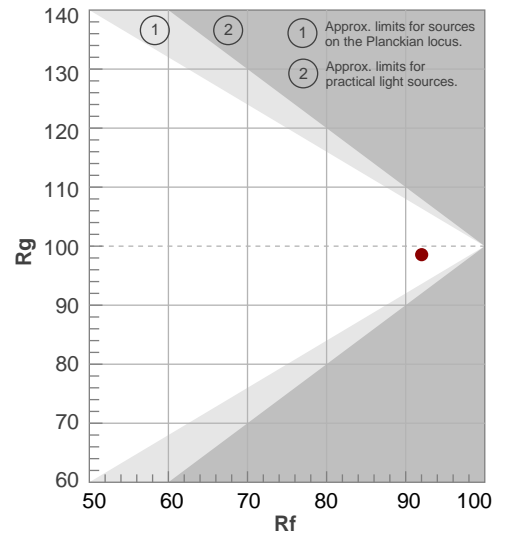
Rf 92.0

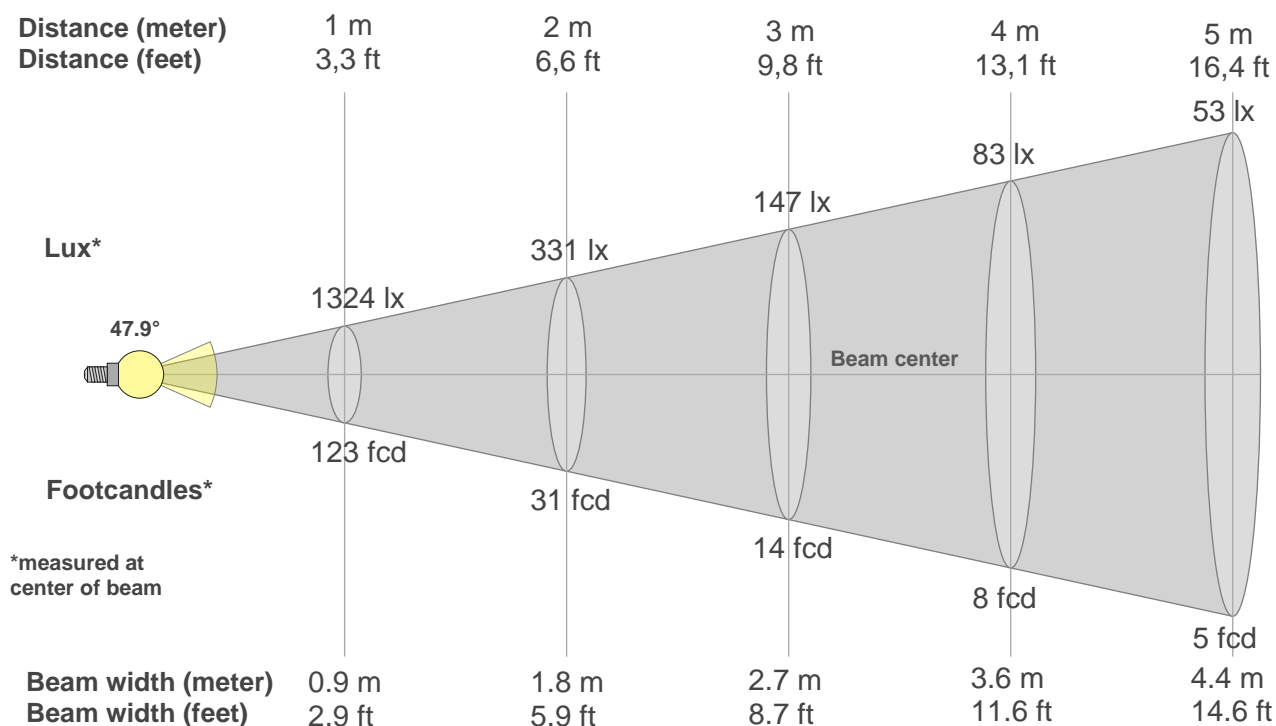
Fidelity index Rf

Rg 98.6

Gammut index Rg

Hue Bin	R _f	Graphic shifts (%)	
		Chroma	Hue
1	91	-5%	0%
2	93	-3%	2%
3	92	-2%	4%
4	94	-3%	1%
5	95	-1%	2%
6	96	1%	1%
7	96	-2%	-1%
8	97	-1%	1%
9	93	-2%	3%
10	90	-1%	7%
11	89	2%	8%
12	90	5%	0%
13	92	2%	-5%
14	89	4%	-8%
15	92	-2%	-3%
16	86	-2%	-10%





Beam intensities from 1-20m

1m	2m	3m	4m	5m	6m	7m	8m	9m	10m	11m	12m	13m	14m	15m	16m	17m	18m	19m	20m
3.3ft	6.6ft	9.8ft	13.1ft	16.4ft	19.7ft	23ft	26.2ft	29.5ft	32.8ft	36.1ft	39.4ft	42.7ft	45.9ft	49.2ft	52.5ft	55.8ft	59.1ft	62.3ft	65.6ft
1324lx	331lx	147lx	83lx	53lx	37lx	27lx	21lx	16lx	13lx	11lx	9lx	8lx	7lx	6lx	5lx	5lx	4lx	4lx	3lx
123fcd	30.7fcd	13.7fcd	7.7fcd	4.9fcd	3.4fcd	2.5fcd	1.9fcd	1.5fcd	1.2fcd	1fcd	0.9fcd	0.7fcd	0.6fcd	0.5fcd	0.5fcd	0.4fcd	0.4fcd	0.3fcd	0.3fcd

Intensities in 0° c-plane

0°	2°	4°	6°	8°	10°	12°	14°	16°	18°	20°	22°	24°	26°	28°	30°	32°	34°	36°	38°
1324	1321	1309	1284	1252	1207	1153	1093	1028	957	872	771	660	552	456	373	291	219	155	103
100%	100%	99%	97%	95%	91%	87%	83%	78%	72%	66%	58%	50%	42%	34%	28%	22%	17%	12%	8%

Intensities in 90° c-plane

0°	2°	4°	6°	8°	10°	12°	14°	16°	18°	20°	22°	24°	26°	28°	30°	32°	34°	36°	38°
1324	1319	1305	1281	1245	1199	1145	1086	1024	955	866	764	655	550	456	376	296	222	155	99
100%	100%	99%	97%	94%	91%	87%	82%	77%	72%	65%	58%	49%	42%	34%	28%	22%	17%	12%	7%

Intensities in 180° c-plane

0°	2°	4°	6°	8°	10°	12°	14°	16°	18°	20°	22°	24°	26°	28°	30°	32°	34°	36°	38°
1324	1316	1298	1272	1233	1185	1129	1068	1003	931	852	763	660	549	444	362	296	232	172	118
100%	99%	98%	96%	93%	90%	85%	81%	76%	70%	64%	58%	50%	41%	34%	27%	22%	18%	13%	9%

Intensities in 270° c-plane

0°	2°	4°	6°	8°	10°	12°	14°	16°	18°	20°	22°	24°	26°	28°	30°	32°	34°	36°	38°
1324	1318	1304	1281	1243	1197	1143	1082	1016	945	863	766	654	537	431	348	285	221	164	115
100%	100%	99%	97%	94%	90%	86%	82%	77%	71%	65%	58%	49%	41%	33%	26%	22%	17%	12%	9%

Beam angle 50%	Field angle 10%	Cutoff angle 2,5%	Intensity ratio in 120° cone	Intensity ratio in 90° cone
47.9°	74.2°	86°	99.6%	98.5%