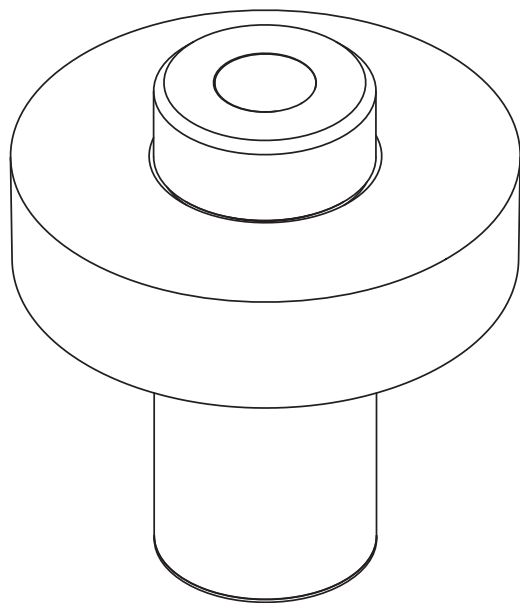


# ollo

Design by  
Václav Mlynář



bomma

bomma.cz

TECHNICAL SHEET  
FOR PORTABLE LIGHT FIXTURES

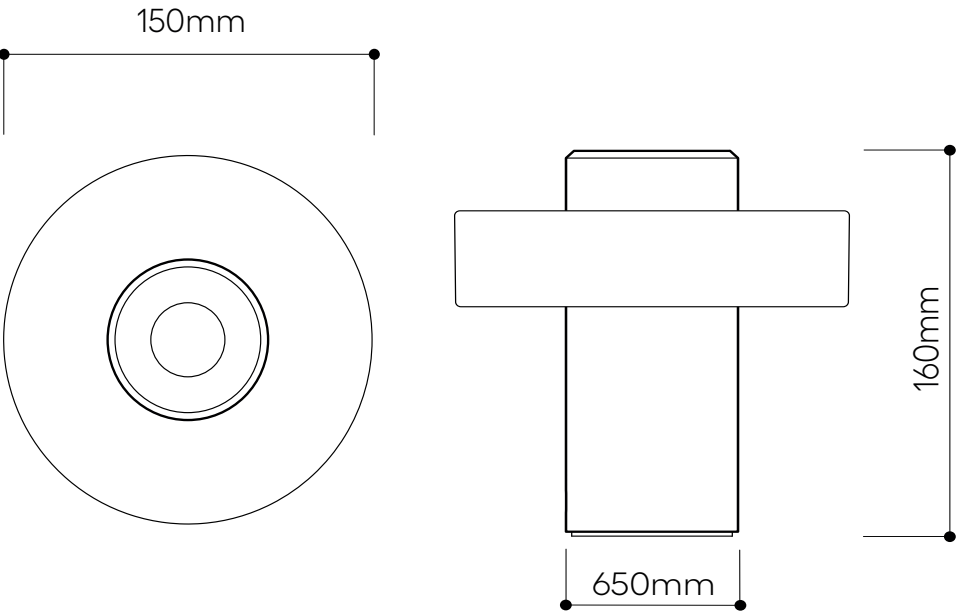
# OLLO portable lamp

Design by  
Václav Mlynář

## Handmade glass attributes

All Bomma products are hand-made from mouth-blown lead-free crystal. Therefore any small bubbles, non-melts and irregularities in the glass are both proof and a characteristic feature of this traditional craft.

The intensity and color shade of the iridescent metal-coating may vary slightly from product to product. Small dots in the coating, especially visible after the light is on, are not a defect of the product.



## LIGHTING DESCRIPTION

Size	mounting dia. 65mm, glass dia. 150mm overall 150mm, height 160 mm
Mounting	brushed silver, brushed antracite, brushed bronze
Material	stainless steel
Glass	cast lead-free crystal glass
Glass colour	crystal clear
Weight	+ 2.3 kg / 5.1 lb
Protection	IP 44
Battery	Li-Ion battery 4.2V 9000mA / 31Wh LED battery status control 25% 50% 75% 100% 10 hours at 75% brightness
Charging	USB-C quick charge, ~ 3,5h do plného nabití
Nominal Voltage	5V / 2A / 10W cable is not included, charger is not included

## LIGHT SOURCE

Type	LED module ring – 4W
Base	custom LUMILEDS LUXEON 3030 HE Plus
Temperature	tunable white 1850 - 4000 K
Luminous Flux	784 lm
Luminous Efficacy	196 lm/W
Color index	RA 90+
Dimming	integrated rotary knob

## PACKAGING

Material	Cardboard
Size	220 × 220 × 250 mm 8,6 × 8,6 × 9,8 inch
Origin: traditionally produced in the Czech Republic Intellectual property license holder: Bomma Czech Republic (EU) Represented by BMRC group s.r.o.	

