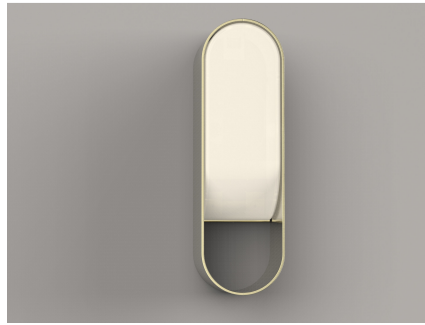




Rev: 10.01.19

INSTALLATION INSTRUCTIONS

C-10725 Loop Sconce Single



IMPORTANT!

AT ALL TIMES WIRING TO BE DONE PER NATIONAL ELECTRICAL CODES (NEC) OR APPLICABLE LOCAL CODES. READ ALL INSTRUCTIONS THOROUGHLY. TURN OFF POWER AT CIRCUIT BREAKER OR FUSE BOX BEFORE PROCEEDING.

This fixture requires remote installation of the LED driver within the wall. If this requirement cannot be satisfied, STOP INSTALLATION NOW!

STEP 1

- Carefully remove fixture from packaging. Avoid using a sharp blade on the packaging, as doing so may result in damage to the fixture or finish. Glass shade is fragile so handle with care.

STEP 2

- Turn off power at fuse box or circuit breaker.



Figure 1

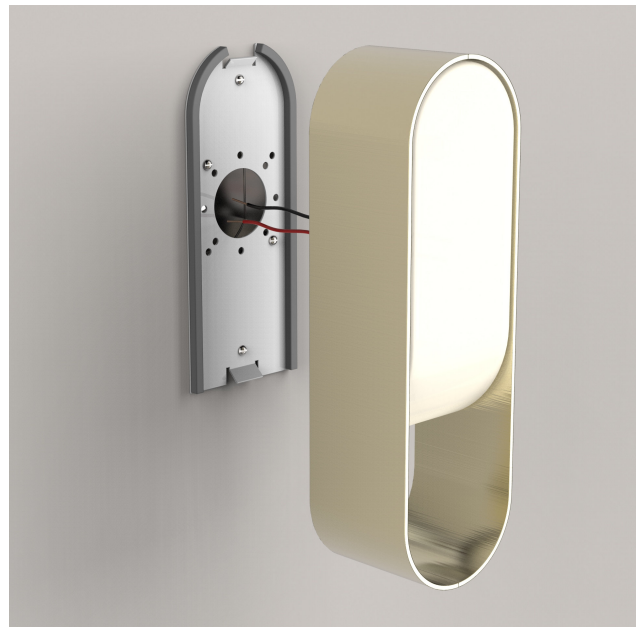


Figure 2

STEP 3

- Install LED driver box within wall, remotely away from fixture. Driver will not fit inside fixture.
- Supply power to input side of remote driver (hot and neutral).
- Driver box must be properly grounded.
- If installing fixture on a 0-10V dimming system, run purple and gray low-voltage wires to dimmer.
- If dimming is not required, cap off the purple and gray leads separately.
- Run red and black LED driver leads to electrical box where scone will be installed.

STEP 4

- Install mounting bracket to wall electrical box with the screws provided. (Figure 1)
- Use plastic wall anchors on top and bottom of the mounting bracket.
- Be sure curved end of plate is oriented at the top. Do not mount plate upside down.

STEP 5

- While holding fixture, make LED wiring connections with included connectors.
- Connect RED (+) LED wire to red driver wire as discussed in STEP 3.
- Connect BLACK (-) LED wire to black driver wire as discussed in STEP 3.
- Push all connections inside the outlet box.
- **NEVER CONNECT WIRES DIRECTLY TO LINE VOLTAGE POWER.**

STEP 6

- Hook backside of fixture over angled tab on mounting bracket. (Figure 2)
- Push fixture firmly against wall. Do not force.

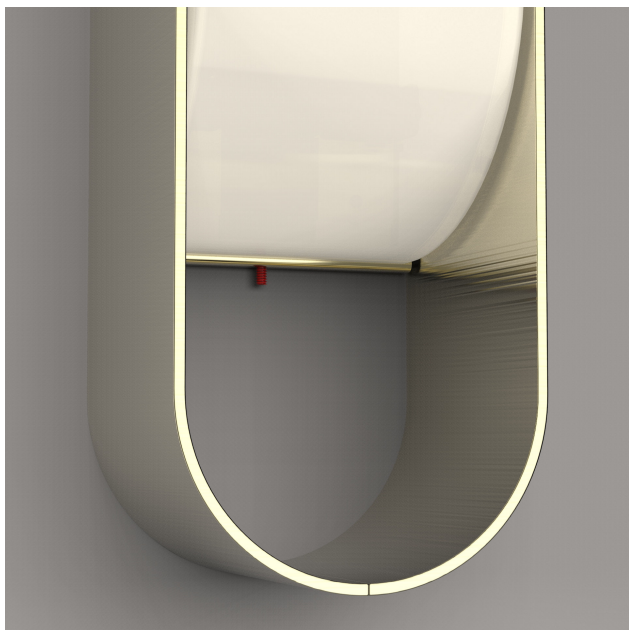


Figure 3

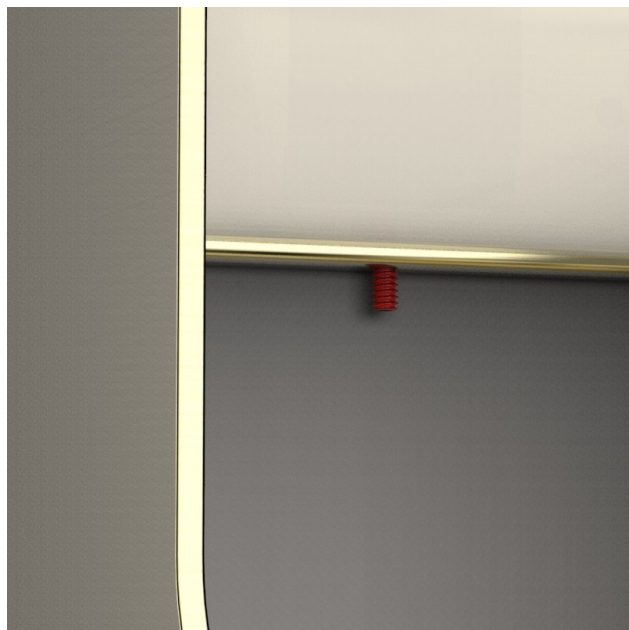


Figure 4

STEP 7

- Using the provided Allen Wrench, tighten set screw near underside of glass shade. (Figure 3)
- Set screw shown in red for illustration. (Figure 4)