



Rev: 2.10.22

INSTALLATION INSTRUCTIONS

C-10800 Duet Pendant



IMPORTANT!

AT ALL TIMES WIRING TO BE DONE PER NATIONAL ELECTRICAL CODES (NEC) OR APPLICABLE LOCAL CODES. READ ALL INSTRUCTIONS THOROUGHLY. TURN OFF POWER AT CIRCUIT BREAKER OR FUSE BOX BEFORE PROCEEDING.

STEP 1

- Carefully remove fixture components from packaging. Avoid using a sharp blade on the packaging, as doing so may result in damage to the fixture or finish. Glass is fragile. Handle with care.

STEP 3

- Separate mounting disk from canopy assembly.
- Loosen threaded ring on underside of canopy. Allow canopy to slide down stem (Figure 1).

STEP 3

- Remove brass thumb knobs from the stem bracket. (Figure 2)
- Separate stem and bracket from mounting disk.



Figure 1



Figure 2

STEP 4

- Secure mounting disk to electrical box with the provided screws (Figure 3)
- *Note: wiring is not shown for illustration purposes.*



Figure 3

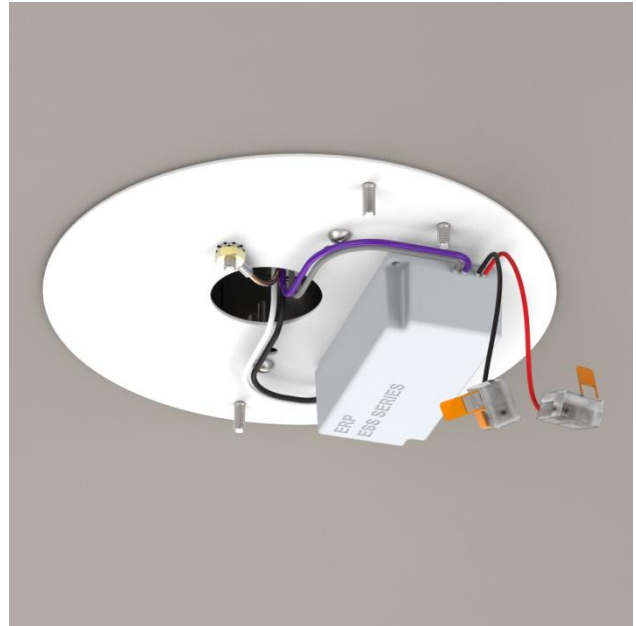


Figure 4

STEP 5

- Make wire connections using included orange twist-on connectors. (Figure 4)
- **If installing on ELV/reverse-phase or MLV/forward-phase dimmer systems, or a basic switch:**
 - Connect the white driver lead to the neutral supply wire (typically white).
 - Connect the black driver lead to the hot supply wire (typically black).
 - Connect the copper fixture wire to the ground wire or ground terminal in the outlet box.
- **If installing on a 0-10V dimming system,,** follow the previous steps plus:
 - Connect the purple driver wire to the purple supply wire.
 - Connect the gray driver wire to the gray supply wire.
- **If 0-10V dimming is not required,** cap purple and gray wires as these wires are not needed.
- Leave black and red driver wires dangling for hookup on a later step.

STEP 6

- Begin assembly of shade frame.
- Secure the two forks to the shade ring, using metal flat head screws, shown red (Figure 5)
- Be sure that side of fork with the vertical groove detail is facing outward (Figure 6)

STEP 7

- Gently slide glass into forks. Forks are lined with a soft silicone channel.
- Secure glass to frame with 5/8" long white nylon screws, shown red for illustration (Figure 7)
- Do not over-tighten screws.

STEP 8

- Repeat process for second piece of glass (Figure 8)

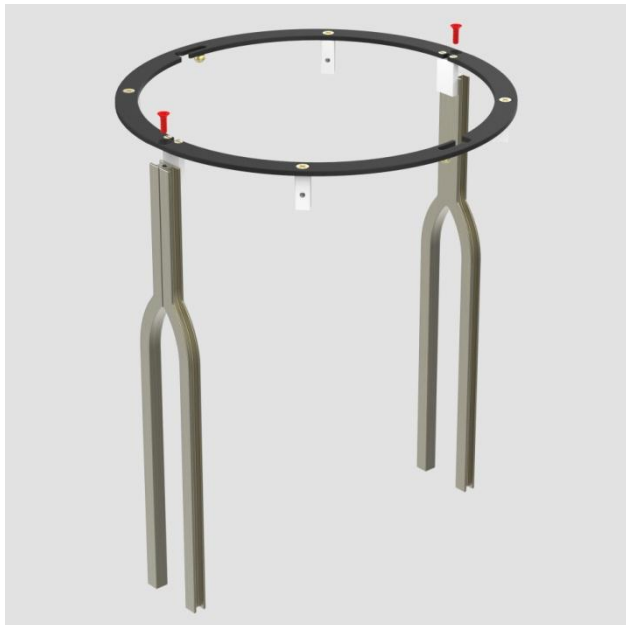


Figure 5

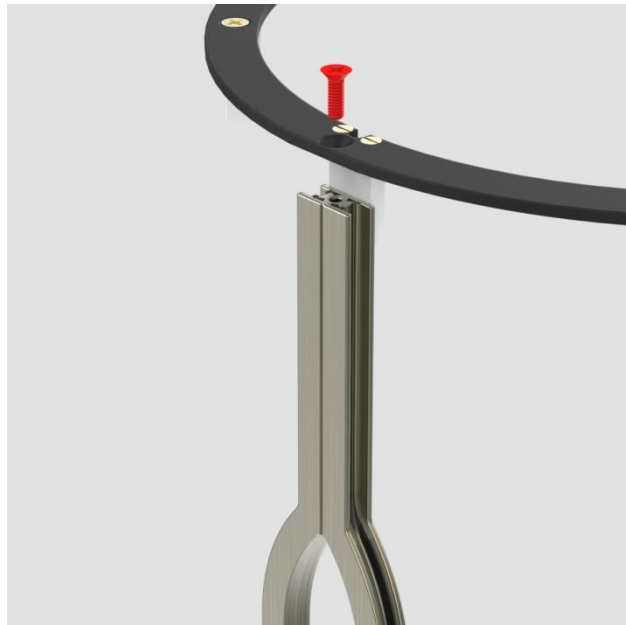


Figure 6



Figure 7



Figure 8

STEP 9

- Prepare a padded surface for attaching the glass shade assembly to main fixture assembly.
- Flip main fixture assembly over and set on pad as shown (Figure 9).
- Flip shade assembly so that ring is facing downward.
- Hold glass shade assembly over fixture.

STEP 10

- Align slots on shade ring with the brass balls on outside of white housing. See arrows (Figure 10)
- *Note: glass shown removed for illustration purposes in Figures 10/11/12/13.*



Figure 9

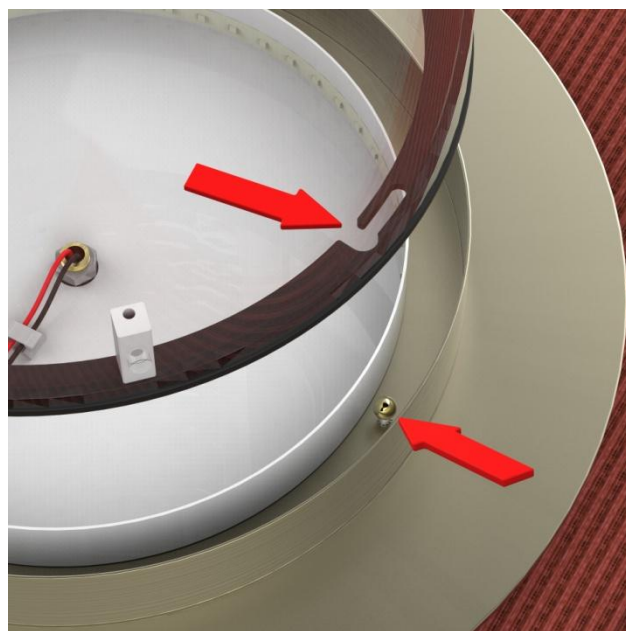


Figure 10

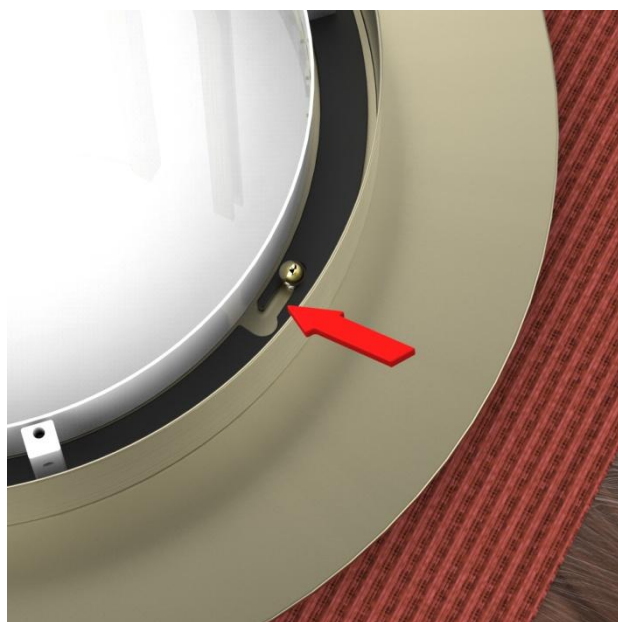


Figure 11

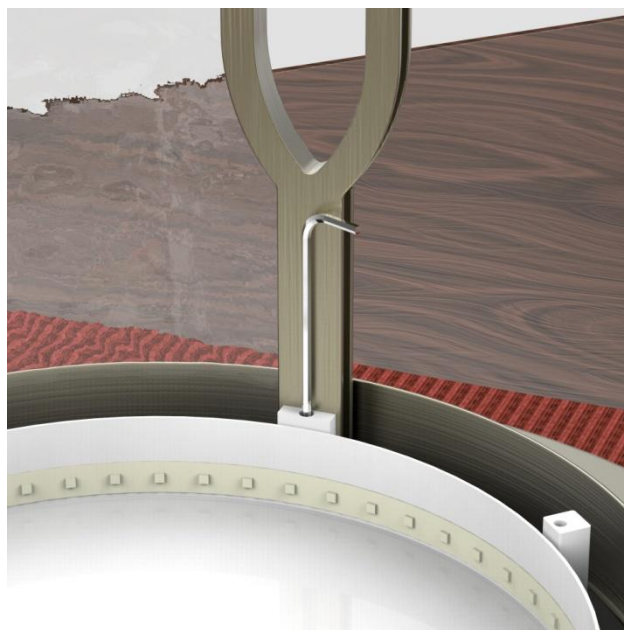


Figure 12

STEP 11

- Rotate shade assembly clockwise until brass ball is at end of slot, as shown by arrow (Figure 11)
- Fixture has an anti-rotation mechanism to prevent glass shade from backing out and falling.
- **Critical!** Using a hex key, tighten set screws within the blocks adjacent to forks (Figure 12)
- Tighten until both screws bottom out.

STEP 12

- Using a screwdriver, attach acrylic diffuser disk to white housing (Figures 13/14)
- Use provided 3/8" long white nylon screws, one shown red.

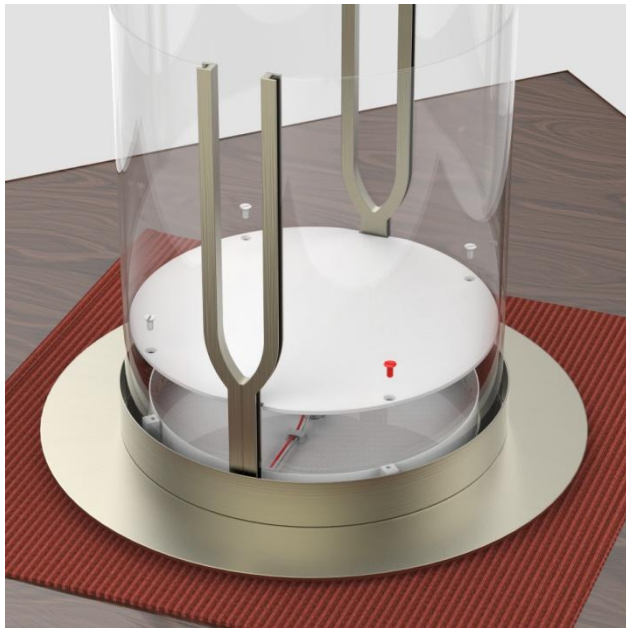


Figure 13



Figure 14

STEP 13

- Gently lift and flip fixture over and set on pad (Figure 15)

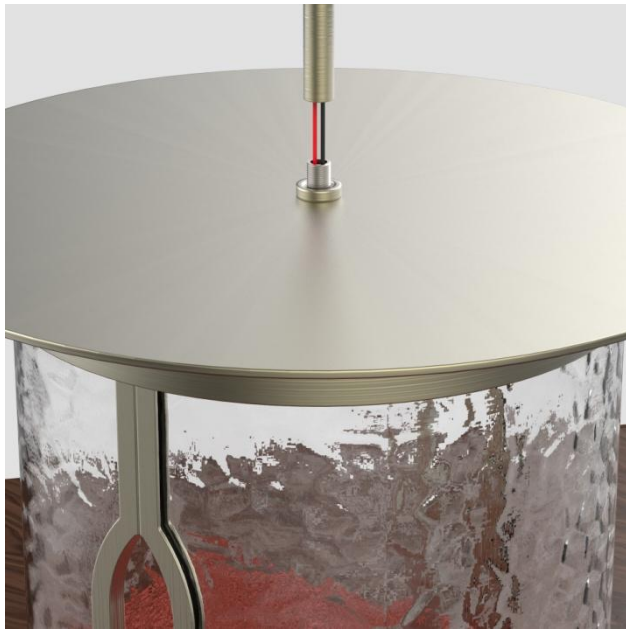


Figure 15

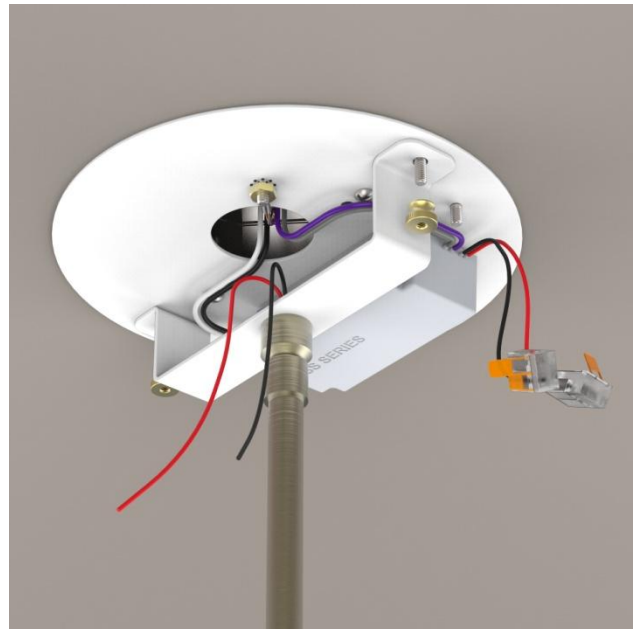


Figure 16

STEP 14

- Feed wiring up through stem (Figure 15)
- Thread stem onto exposed nipple on top of fixture housing (Figure 16)



Figure 17



Figure 18

STEP 15

- Lift fixture up to mounting disk. Align support bracket over studs on disk (Figure 16)
- Secure with thumb knobs.
- Allow fixture to hang freely.

STEP 16

- Using provided lever-style connectors, connect fixture wiring to the driver (Figure 16)
- Pair the red (+) fixture lead to the red (+) driver wire.
- Pair the black (-) fixture lead to the black (-) driver wire.

STEP 17

- Gently slide canopy up stem to avoid scratching.
- Secure canopy onto the swivel aligner using the threaded collar (Figures 17/18).

STEP 18

- Restore power to fixture.