

# caracole



## DUNE

uph-422-036-a

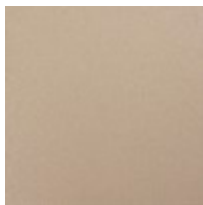
**COLLECTION:** CARACOLE UPHOLSTERY

**DIMENSIONS:** 24W x 23.5D x 30H

Fashion-forward in form and function, this small-scale accent chair is perfectly sized to accompany a dining table, desk or vanity. Elegantly dressed in a textured ivory woven fabric, it's cinched in the middle with a horizontal wood band in a Radiant Pearl finish. Its concave front apron detail provides a distinctive finishing touch, while hidden casters make it easy to move.

**CONSTRUCTION:** Webbing | Seat cushion with foam.

**FINISH:**



Radiant\_Pearl

**FABRIC:**



Body Fabric: 2896-  
34CC-P  
Performance