

caracole



COUNTER BALANCE CHAIR

uph-022-032-a

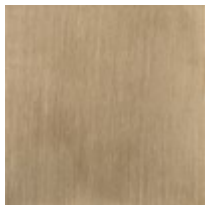
COLLECTION: CARACOLE UPHOLSTERY

DIMENSIONS: 36.5W x 38.25D x 25.5H

A perfect alignment of texture, material and design intention lends a soft-lined yet sophisticated style to seating areas. Dressed in an oatmeal melange woven fabric with subtle rust threading, its comfortable design features channel-tufted arms and a loose back cushion, propped by a faux-leather-wrapped, counter balance capped in Champagne Gold. Reeded cast legs add tactile appeal and a note of distinction.

CONSTRUCTION: 8-way hand tied seat. | Spring down cushions.

FINISH:



Champagne_Gold

FABRIC:



Back Wood Rod:



Body Fabric: 4128-
30CC-P
Performance

9179-78CC