

# caracole



## SOFT BALANCE CHAIR

m140-022-032-a

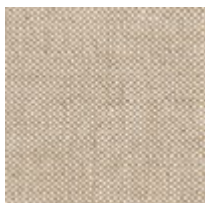
**COLLECTION:** MODERN PRINCIPLES

**DIMENSIONS:** 26W x 26.25D x 33H

An elegant integration of symmetry and form, the Soft Balance chair draws the eye with its chic, half-circle shape. A partially open, barrel-back gives the impression of a suspended seat, upholstered in a parchment-colored fabric. Crisp tailoring and an exact alignment of subtly sloping track arms emphasize its unity and geometry. Makes a refined modern statement on its own; even more eye-catching in pairs when used to create a cozy seating nook.

**CONSTRUCTION:** Webbed seat. | Foam seat cushion.

**FABRIC:**



Body Fabric: 2931-35CC-P

