

caracole



PERFECT TOGETHER - SHORT

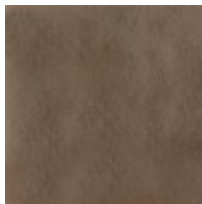
cla-021-443

COLLECTION: CARACOLE CLASSIC

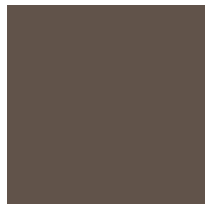
DIMENSIONS: 42W x 14D x 30H

An elegant nesting table when paired with Perfect Together-Tall, this console makes a casual luxe statement in a visually tactile, monochromatic palette. Its streamlined design features a Brushed Antique Brass-finished frame with tapered legs, capped in Deep Bronze metal ferrules for added distinction. Topped in a lustrous acrylic and resin, hand-stamped with a cross-hatch pattern in hues of cream and alabaster. Style as a sofa table or a console in halls and entryways.

FINISH:



Brushed Antique
Brass



Deep Bronze



Albino