

caracole



POINT OF VIEW

cla-019-213

COLLECTION: CARACOLE CLASSIC

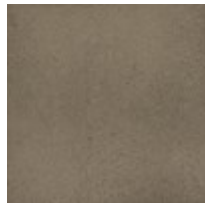
DIMENSIONS: 80W x 18D x 32H

No matter which way you see this gorgeous console, you can't help but admit it has a lovely Point of View. A straightforward silhouette showcases its extraordinary linear veneer patterns and is topped with a Caracole Cream stone top that ensures usability and durability. Block feet and a soft tonal finish of Ash Driftwood convey its relaxed attitude while a bead of Sundance Gold gives the top edge a touch of luxe. Touch-latch doors open to reveal a fully finished interior painted in Putty with plenty of storage and an adjustable shelf and drawer behind each of its four doors.

FINISH:



Ash Driftwood



Sundance Gold