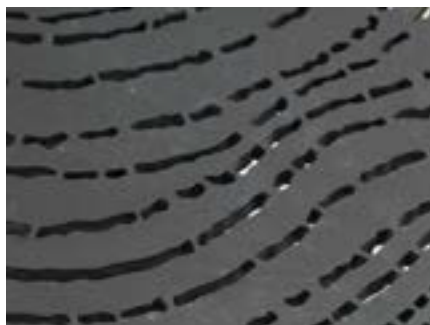


METAL/IRON

Whether left in a raw, highly textured form or polished to a gloss finish, metals bring character to our designs and sophistication to your interiors.



- Wipe spills immediately with a dry, soft cloth.
- Dust regularly with a soft, damp cloth, followed by a dry one.
- Avoid use of cleaning products with acid, vinegar, lemon, and ammonia.