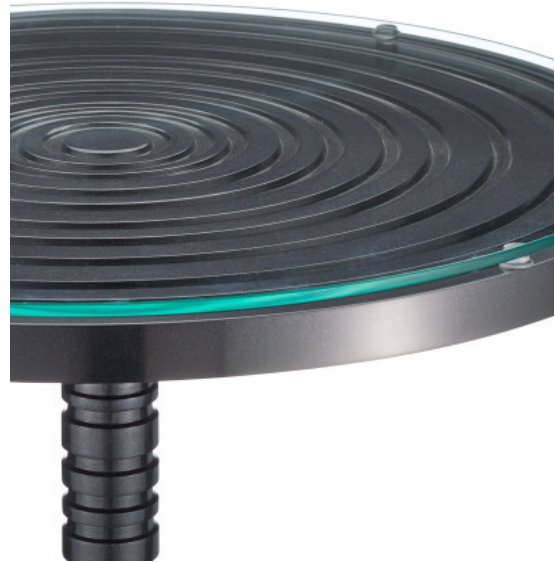


CURREY

& C O M P A N Y



Erno Black Accent Table

4000-0202

In Stock | New

Overall: 25"h x 18"dia

Finish: Black Nickel / Clear

Materials: Cast Aluminum / Glass

Item Weight: 17 lbs.

Made of cast aluminum, the Erno Black Accent Table has industrial-leaning style with its turned column that resembles a gear, as well as the concentric circles that flow around its top and the base. The black nickel finish adds to the handsomeness of this piece, which is fitted with a glass top. The Erno is large for an accent table.

this information is accurate as of 01/27/2025 15:51