

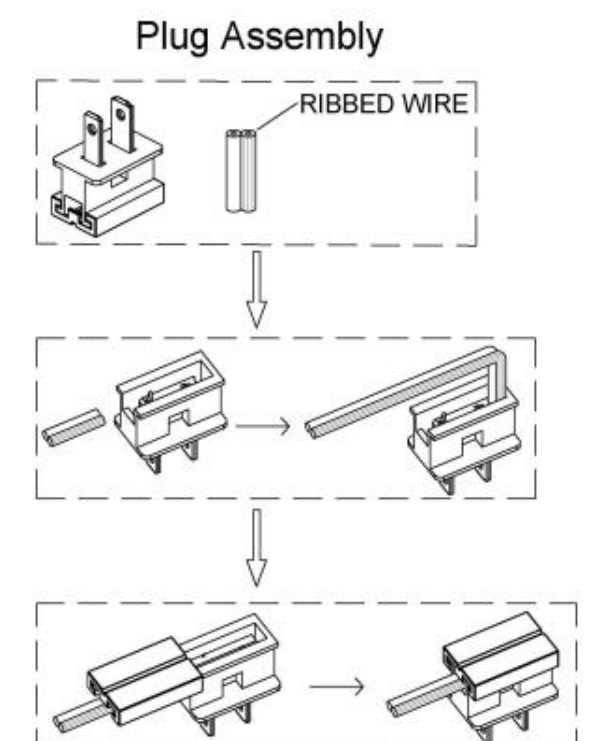
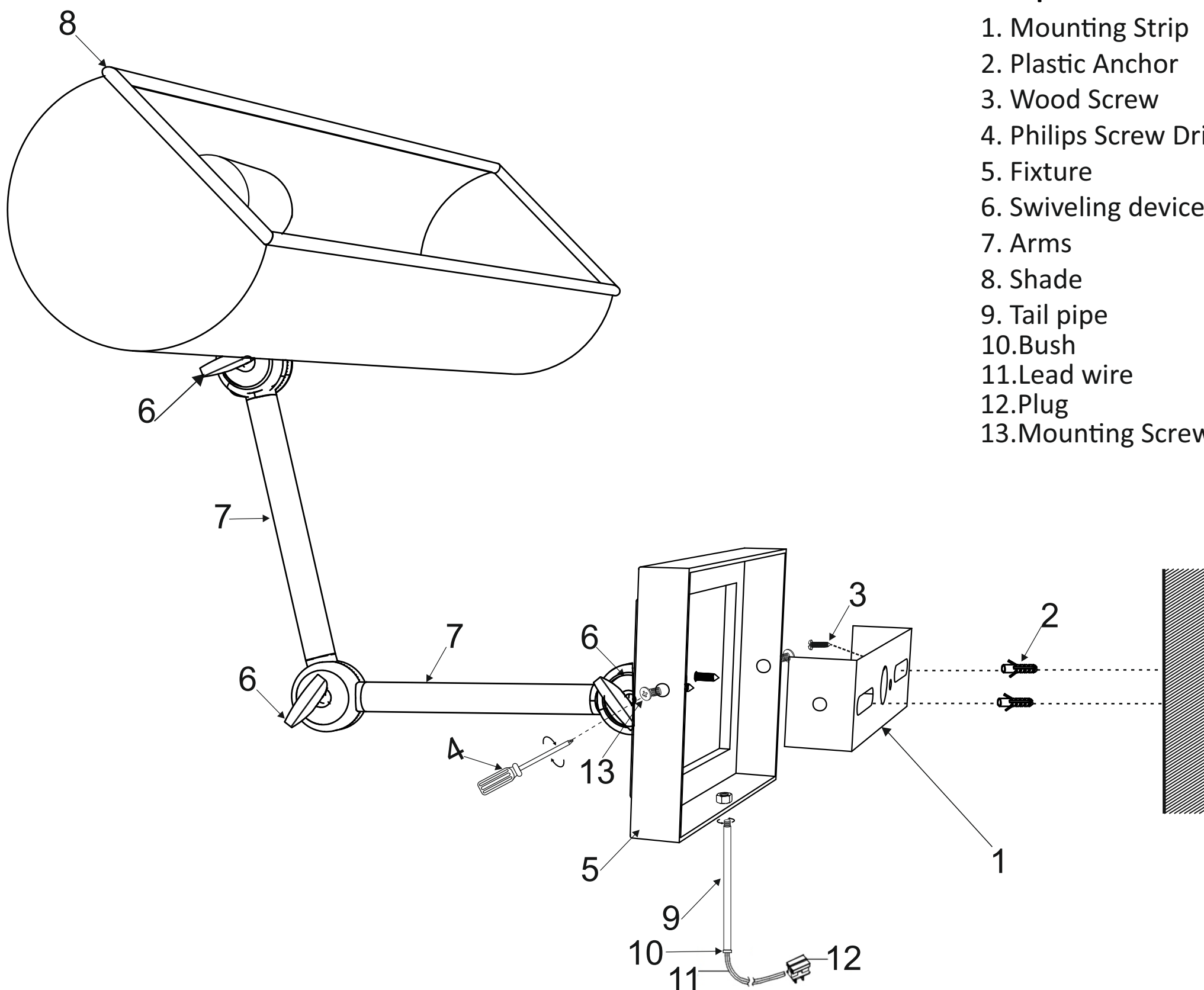
ASSEMBLY AND INSTALLATION INSTRUCTIONS for the 653711 Fixture

Important Safety information (Please read before proceeding)

1. Remove the fixture, parts and all mounting hardware bags (orange) from the carton and verify that all parts are present according to the illustration sheet. All parts must be used as indicated. Do not replace any parts, leave any parts out, or use any parts which are worn out or broken. **Failure to follow the instructions could cause a hazardous situation, voids the warranty and violates the U.L. listing of the fixture.**
2. To prevent the electric shock, turn off the main power at the circuit breaker before installing the fixture. **NEVER attempt to install, clean or replace bulbs without shutting off the electricity to the fixture.**
3. **Never use light bulbs with wattage ratings that exceed the fixtures maximum rating.** Always make sure the electric current is turned off before changing the bulbs.
4. If you experience difficulties installing the lighting fixture or it fails to work as expected, please contact a local qualified licensed electrical contractor.
5. Please contact your local Capital Lighting Fixture reseller with any assembly or installation question or request for replacement parts for your new fixture.

Components

1. Mounting Strip
2. Plastic Anchor
3. Wood Screw
4. Philips Screw Driver (not provided)
5. Fixture
6. Swiveling device with butterfly screw
7. Arms
8. Shade
9. Tail pipe
10. Bush
11. Lead wire
12. Plug
13. Mounting Screws



Assembly Instructions to PORTABLE MOUNT the 653711 fixture with Decor Tail

1. Pass Lead Wire (11) thru Decor Tail w/Nipple (9) and bush (10) carefully, then secure them together tightly.
2. Determine desired location for Fixture (5). Consideration must be made for length of Lead Wire (11).
3. Find appropriate threaded holes on Mounting Bracket (1), then assemble Mounting Bracket (1) to mounting surface using Plastic Anchor hardware (2) & suitable for material of mounting surface. Mark position of holes on mounting surface drill appropriate holes and assemble as illustrated.
4. Attach Mounting Bracket (1) to mounting surface with wood Screws (3) tightly.
5. Raise Fixture (5) toward mounting surface, then push canopy of Fixture (5) to mounting surface, make sure mounting holes in canopy of Fixture (5) and Mounting Bracket (1) are in line, carefully passing Mounting Screws (13) thru holes, then secure canopy of Fixture (5) to mounting surface with Mounting Screws (13) and Philips Screw Driver (not provided) (4).
7. Adjust Arm (7), Shade (8) or Swiveling Devices (6) to achieve desirable position (don't over loosen Knob of Swiveling Device). If the teeth are misaligned, please hold the Arms (7) and adjust the swiveling part with adjustable knob slightly until the teeth matching well.
8. Install recommended bulb per wattage label indicated on the Socket.

PLUG (12) ASSEMBLY

1. This is a polarized connector. One blade is wider. This blade must be connected to the ribbed side of the wire.
2. **CAUTION:** Cut wire end flush. Separate wire 1/4" (DO NOT STRIP WIRE).
3. Remove cap. Hold connector in position as shown. Hold wire with ribbed side at top.
4. Bend end of wire and push into bottom groove.

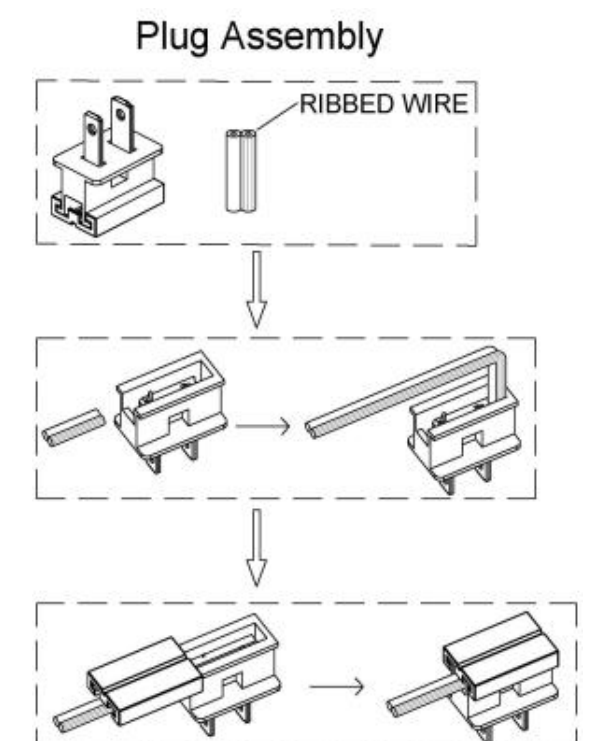
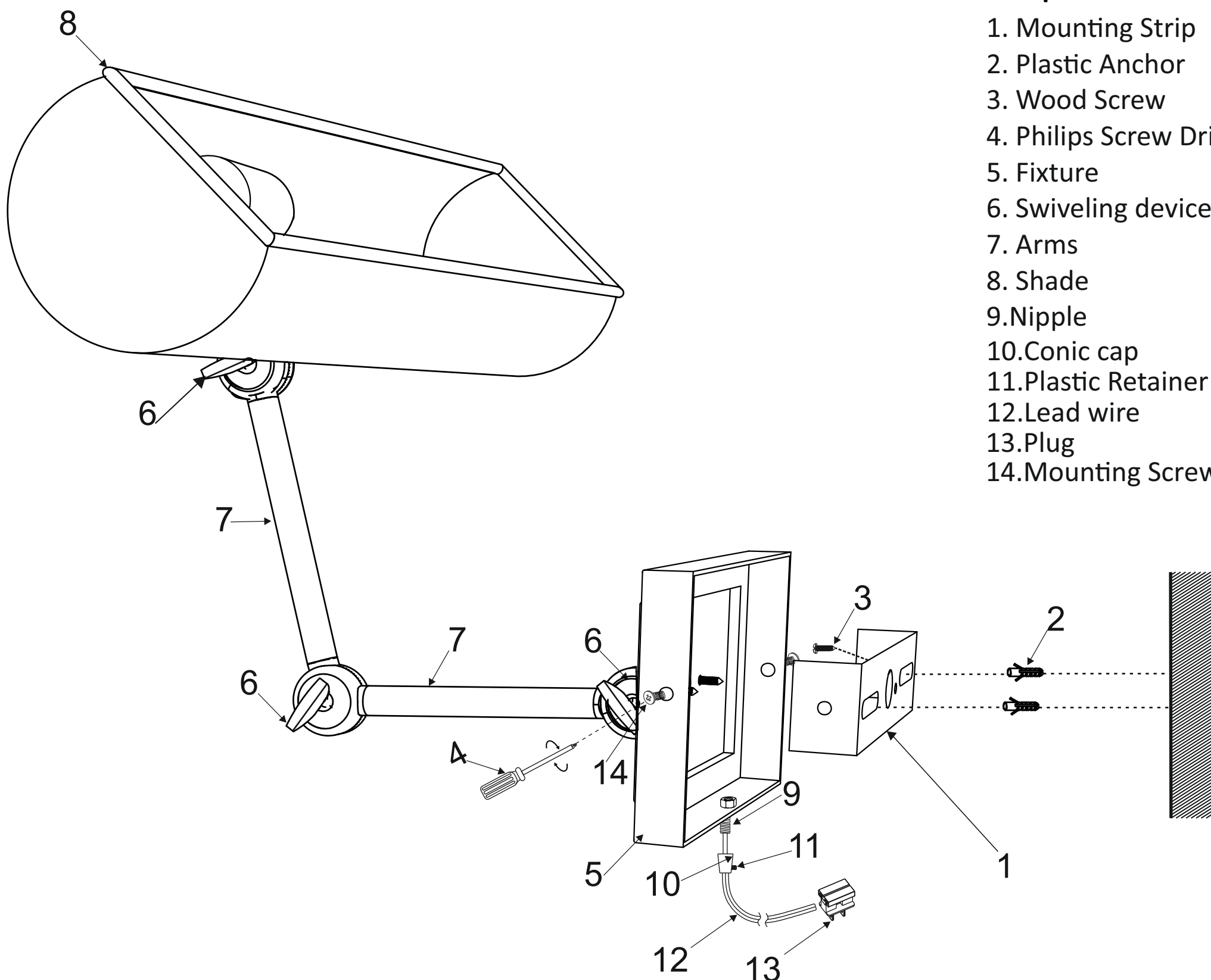
ASSEMBLY AND INSTALLATION INSTRUCTIONS for the 653711 Fixture

Important Safety information (Please read before proceeding)

1. Remove the fixture, parts and all mounting hardware bags (orange) from the carton and verify that all parts are present according to the illustration sheet. All parts must be used as indicated. Do not replace any parts, leave any parts out, or use any parts which are worn out or broken. **Failure to follow the instructions could cause a hazardous situation, voids the warranty and violates the U.L. listing of the fixture.**
2. To prevent the electric shock, turn off the main power at the circuit breaker before installing the fixture. **NEVER attempt to install, clean or replace bulbs without shutting off the electricity to the fixture.**
3. **Never use light bulbs with wattage ratings that exceed the fixtures maximum rating.** Always make sure the electric current is turned off before changing the bulbs.
4. If you experience difficulties installing the lighting fixture or it fails to work as expected, please contact a local qualified licensed electrical contractor.
5. Please contact your local Capital Lighting Fixture reseller with any assembly or installation question or request for replacement parts for your new fixture.

Components

1. Mounting Strip
2. Plastic Anchor
3. Wood Screw
4. Philips Screw Driver (not provided)
5. Fixture
6. Swiveling device with butterfly screw
7. Arms
8. Shade
9. Nipple
10. Conic cap
11. Plastic Retainer nut
12. Lead wire
13. Plug
14. Mounting Screws



Assembly Instructions to PORTABLE MOUNT the 653711 fixture without Decor Tail

1. Pass Lead Wire (12) thru nipple (9) and Conic Cap (10) carefully, then secure them together tightly. After that, turn Plastic Retainer Nut (11) of Strain Relief in a clock wise direction tightly so as to set Lead wire (12) well. *Note: The Retainer Nut is Plastic to prevent electrical shock, Do not over tighten.*
2. Determine desired location for Fixture (5). Consideration must be made for length of Lead Wire (11).
3. Find appropriate threaded holes on Mounting Bracket (1), then assemble Mounting Bracket (1) to mounting surface using Plastic Anchor hardware (2) & suitable for material of mounting surface. Mark position of holes on mounting surface drill appropriate holes and assemble as illustrated.
4. Attach Mounting Bracket (1) to mounting surface with wood Screws (3) tightly.
5. Raise Fixture (5) toward mounting surface, then push canopy of Fixture (5) to mounting surface, make sure mounting holes in canopy of Fixture (5) and Mounting Bracket (1) are in line, carefully passing Mounting Screws (14) thru holes, then secure canopy of Fixture (5) to mounting surface with Mounting Screws (14) and Philips Screw Driver (not provided) (4).
7. Adjust Arm (7), Shade (8) or Swiveling Devices (6) to achieve desirable position (don't over loosen Knob of Swiveling Device). If the teeth are misaligned, please hold the Arms (7) and adjust the swiveling part with adjustable knob slightly until the teeth matching well.
8. Install recommended bulb per wattage label indicated on the Socket.

PLUG (13) ASSEMBLY

1. This is a polarized connector. One blade is wider. This blade must be connected to the ribbed side of the wire.
2. **CAUTION:** Cut wire end flush. Separate wire 1/4" (DO NOT STRIP WIRE).
3. Remove cap. Hold connector in position as shown. Hold wire with ribbed side at top.
4. Bend end of wire and push into bottom groove.

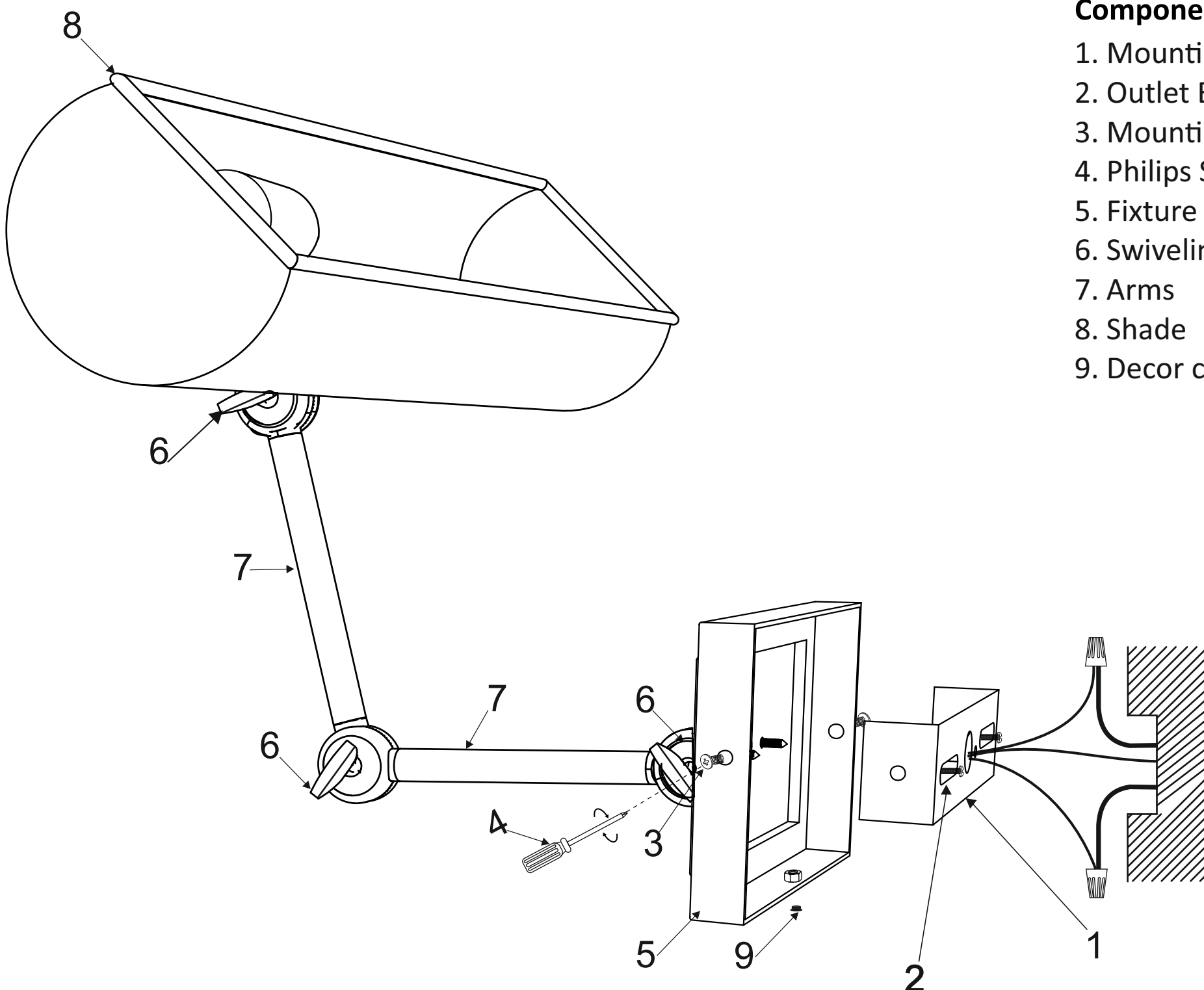
ASSEMBLY AND INSTALLATION INSTRUCTIONS for the 653711 Fixture

Important Safety information (Please read before proceeding)

1. Remove the fixture, parts and all mounting hardware bags (orange) from the carton and verify that all parts are present according to the illustration sheet. All parts must be used as indicated. Do not replace any parts, leave any parts out, or use any parts which are worn out or broken. **Failure to follow the instructions could cause a hazardous situation, voids the warranty and violates the U.L. listing of the fixture.**
2. To prevent the electric shock, turn off the main power at the circuit breaker before installing the fixture. **NEVER attempt to install, clean or replace bulbs without shutting off the electricity to the fixture.**
3. **Never use light bulbs with wattage ratings that exceed the fixtures maximum rating.** Always make sure the electric current is turned off before changing the bulbs.
4. If you experience difficulties installing the lighting fixture or it fails to work as expected, please contact a local qualified licensed electrical contractor.
5. Please contact your local Capital Lighting Fixture reseller with any assembly or installation question or request for replacement parts for your new fixture.

Components

1. Mounting Strip w/Geen Screw
2. Outlet Box Mounting Screws
3. Mounting Screw
4. Philips Screw Driver (not provided)
5. Fixture
6. Swiveling device with butterfly screw
7. Arms
8. Shade
9. Decor cap



Assembly Instructions to WALL MOUNT the 653711 fixture

1. Insert Decor Plug (9) onto assembling hole at canopy bottom of Fixture (5), then secure it
2. Attach Mounting Bracket (1) to Outlet Box with Outlet Box Mounting Screws (2), make sure the mounting holes in both tabs horizontally.
3. Cut lead wire at 10"~12" length from canopy bottom edge of Fixture (5), then split and strip both insulation ends at 3/8"~1/2" length approximately for both live wire and neutral wire separately. *Note: Both wire cutter and wire stripper not provided.*
4. Raise whole Fixture (5) toward outlet box, then connect fixture ground wire to the outlet box ground wire with wire connector supplied; connect the common wire of the lamp cord to the power supply white wire with wire connector supplied; connect supply wire of the lamp cord to the power supply black wire with wire connector supplied. *Note: This fixture is wired using 2 conductor Lamp cord. The insulation between the two conductors on the lamp cord can be split down the center for better access to the two conductors. The common wire on the lamp cord is identified as the conductor with ribs embossed in the rubber wire insulation.*
5. Push Canopy of Fixture (5) to mounting surface, make sure mounting holes in Canopy of Fixture (5) and Mounting Bracket (1) are in line, verify all wires are securely inside Canopy of Fixture (5) and Mounting Bracket (1), and carefully passing Mounting Screws (3) through holes, then secure Canopy of Fixture (5) to mounting surface with Mounting Screws (3) and Philips Screw Driver (not provided) (4).
7. Adjust Arm (7), Shade (8) or Swiveling Devices (6) to achieve desirable position (don't over loosen Knob of Swiveling Device). If the teeth are misaligned, please hold the Arms (7) and adjust the swiveling part with adjustable knob slightly until the teeth matching well.
8. Install recommended bulb per wattage label indicated on the Socket.