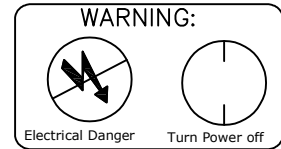
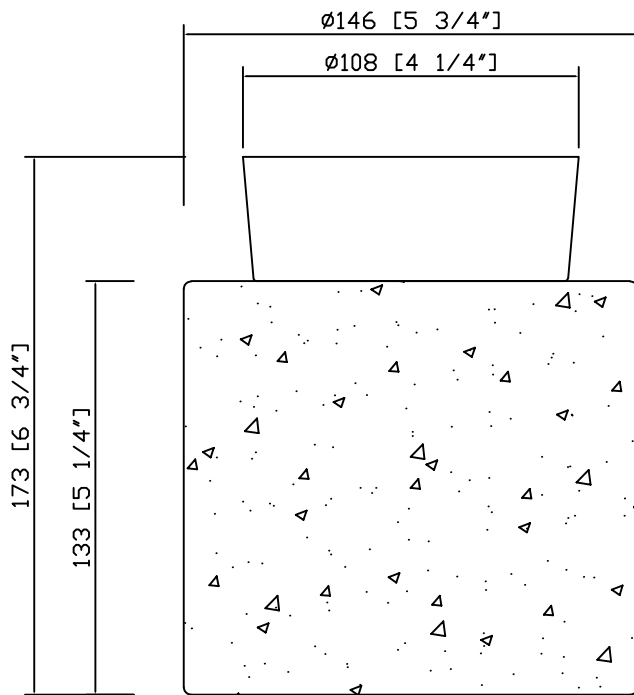


CRYSTORAMA

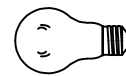
LIGHTING THE WAY FOR SIXTY YEARS



ASSEMBLY INSTRUCTION MODEL #AME-400-AG



All electrical components must be installed by a licensed electrician in accordance with the National Electric Code and the appropriate local electrical codes.



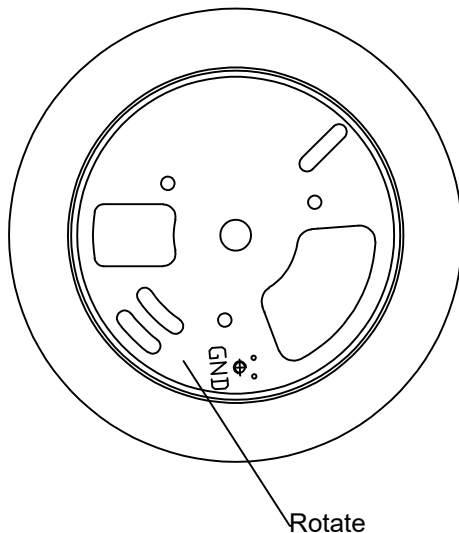
You will need 1- Med. LED Bulb ONLY
15 Watts Recommended 15 Watts Max
(equivalent 100W incandescent)

Use only LED lamps in this luminaire.
Incandescent and halogen lamps may cause
severe thermal damage.

THIS FIXTURE IS Damp RATED

How to Install

1. Remove the mounting plate from the frame by rotating it.
2. Install the mounting plate to the outlet box
3. Install the LED bulb (not included) onto the socket.
4. Screw the alabaster shade with ceiling pan onto the coupling on the socket.



Hold the mounting plate to rotate.



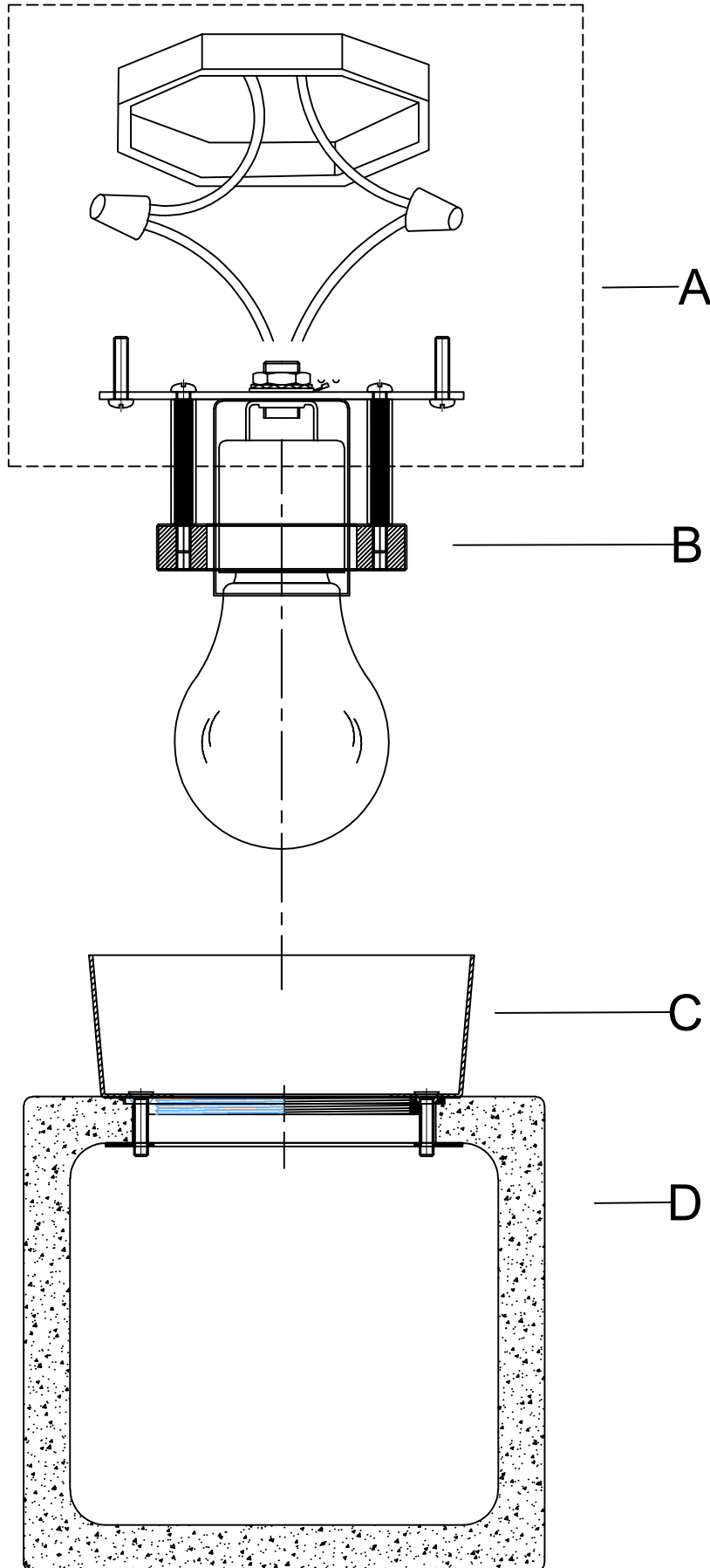
WARNING: This product can expose you to Lead, which is known to the State of California to cause cancer and/or birth defects or reproductive harm. For more information go to www.P65Warnings.ca.gov

CRYSTORAMA

LIGHTING THE WAY FOR SIXTY YEARS



ASSEMBLY INSTRUCTION MODEL #AME-400-AG



Part Number

Part Numbers

- A. (1)-Mounting hardware
- B. (1)-Coupling
- C. (1)-Ceiling pan
(XAR400AGCAN4.25IN)
- D. (1)-Alabaster shade
(XAR400STONE5.75IN)