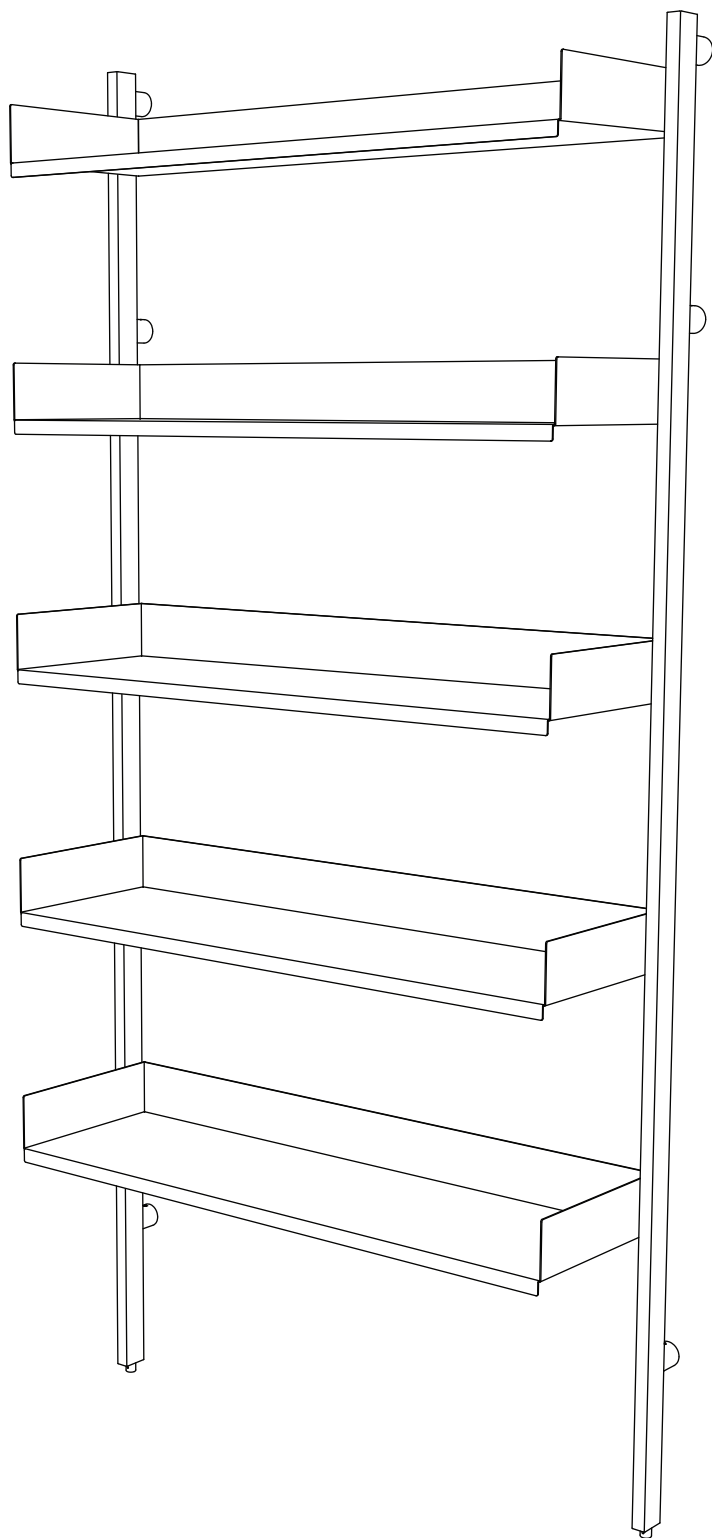
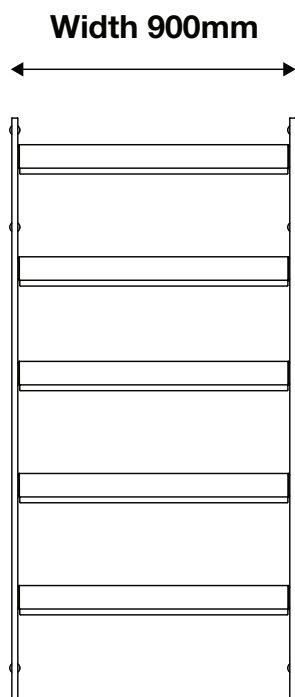


Slot Shelving

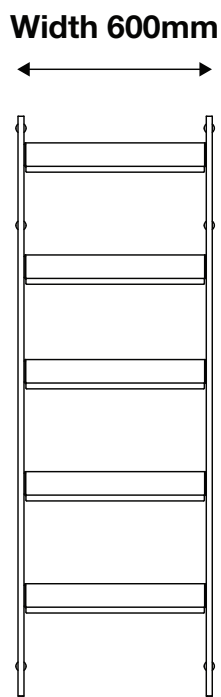


Configurations

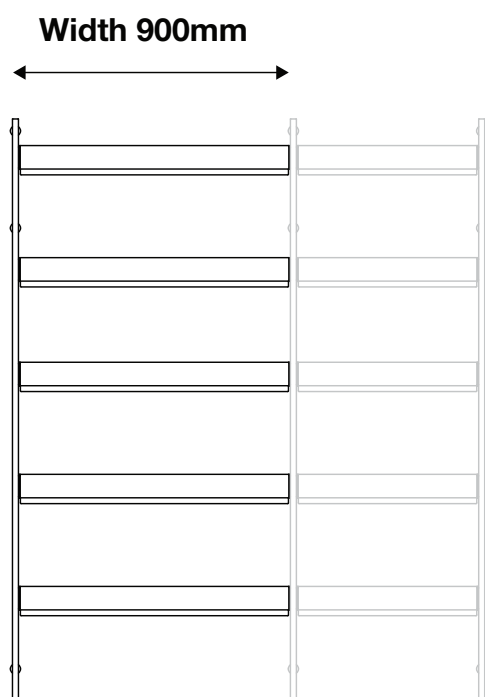
The shelving system comes in four different assembly options as shown below, these are designed to suit a wide range of interiors.



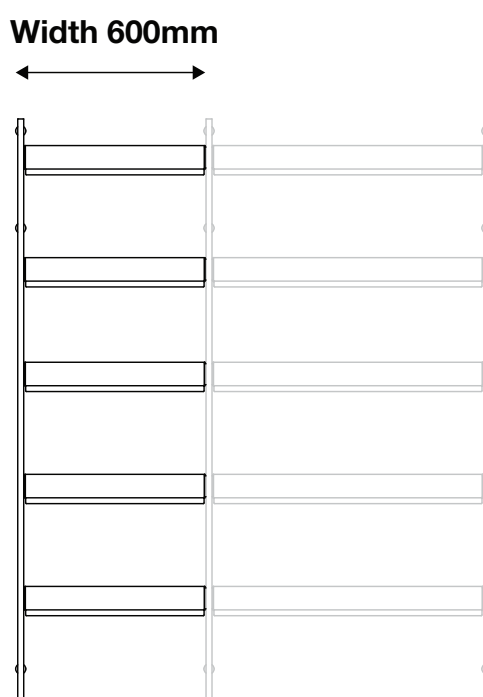
Single 900 system



Single 600 system



Extension 900 system

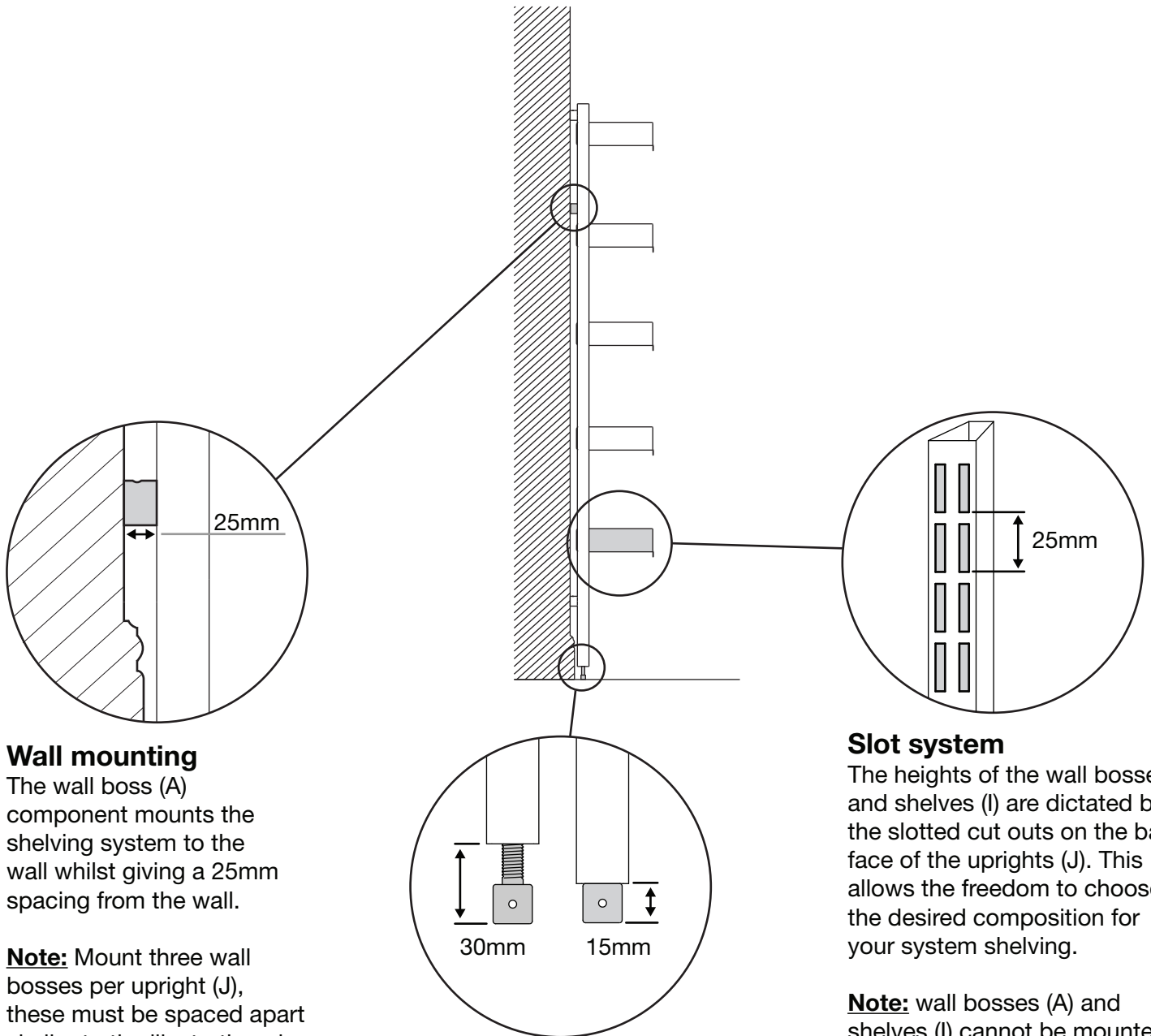


Extension 600 system

Planning

Before beginning the installation process, it is important to assess the area that you wish to install the shelving system in. Illustrated below, outlines important design features that help with adapting the shelving system to suit your space.

Please note: Wall bosses (A) and shelves (I) cannot be mounted in the same slot location on the upright (J).



Wall mounting

The wall boss (A) component mounts the shelving system to the wall whilst giving a 25mm spacing from the wall.

Note: Mount three wall bosses per upright (J), these must be spaced apart similar to the illustration above. Allow for mains plug clearance.

Slot system

The heights of the wall bosses (A) and shelves (I) are dictated by the slotted cut outs on the back face of the uprights (J). This allows the freedom to choose the desired composition for your system shelving.

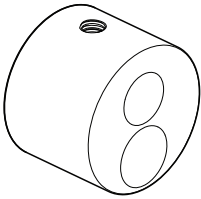
Note: wall bosses (A) and shelves (I) cannot be mounted in the same slot location.

Upright foot

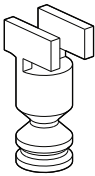
The foot is threaded into bottom of the upright (J), allowing a maximum of 15mm of adjustment.

Note: This component is optional but advised if uncertain about the strength of your wall substraat.

Supplied components



A - Wall boss



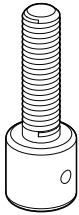
B - Pin



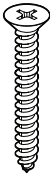
C - Grub Screw



D - Washer



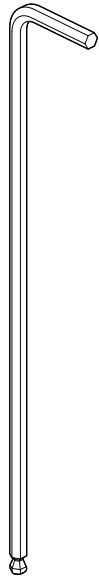
E - Upright foot



F - Screw

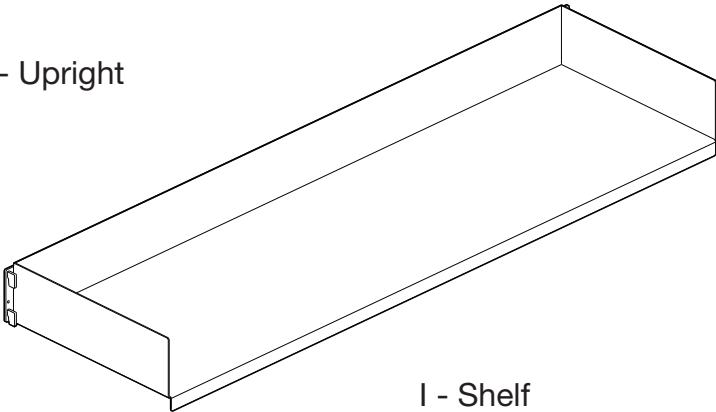


G - Wall Plug

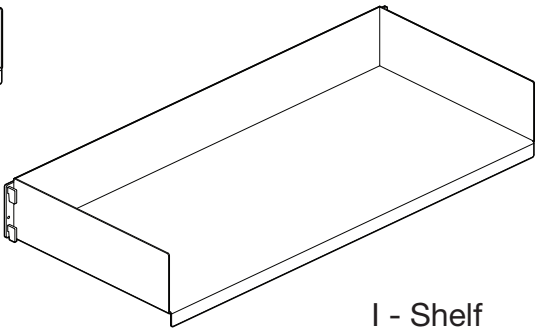


H - Allen Key

J - Upright



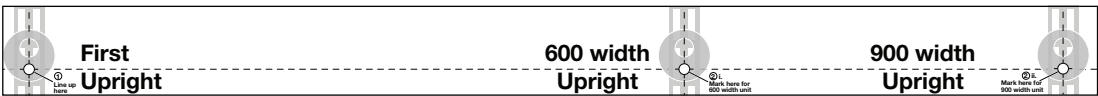
I - Shelf



I - Shelf



K - Small Slot template



L - Long Slot template

Required Tools



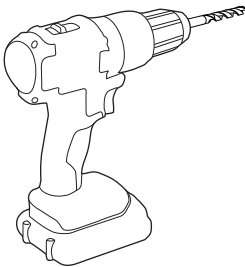
Pencil



Rule



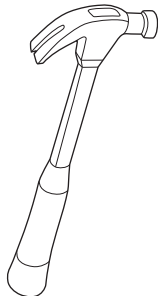
Screw Driver



Drill



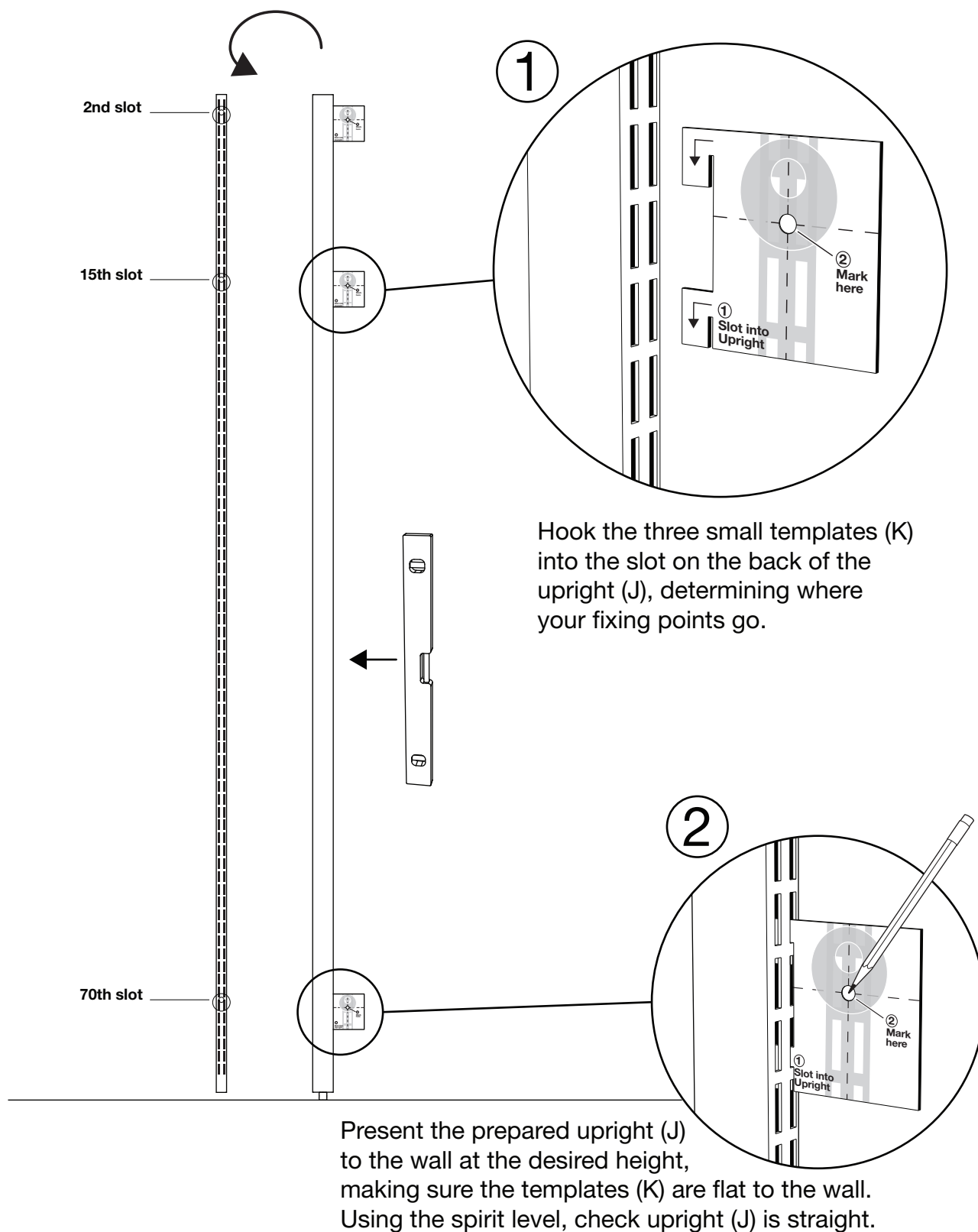
Spirit Level



Hammer

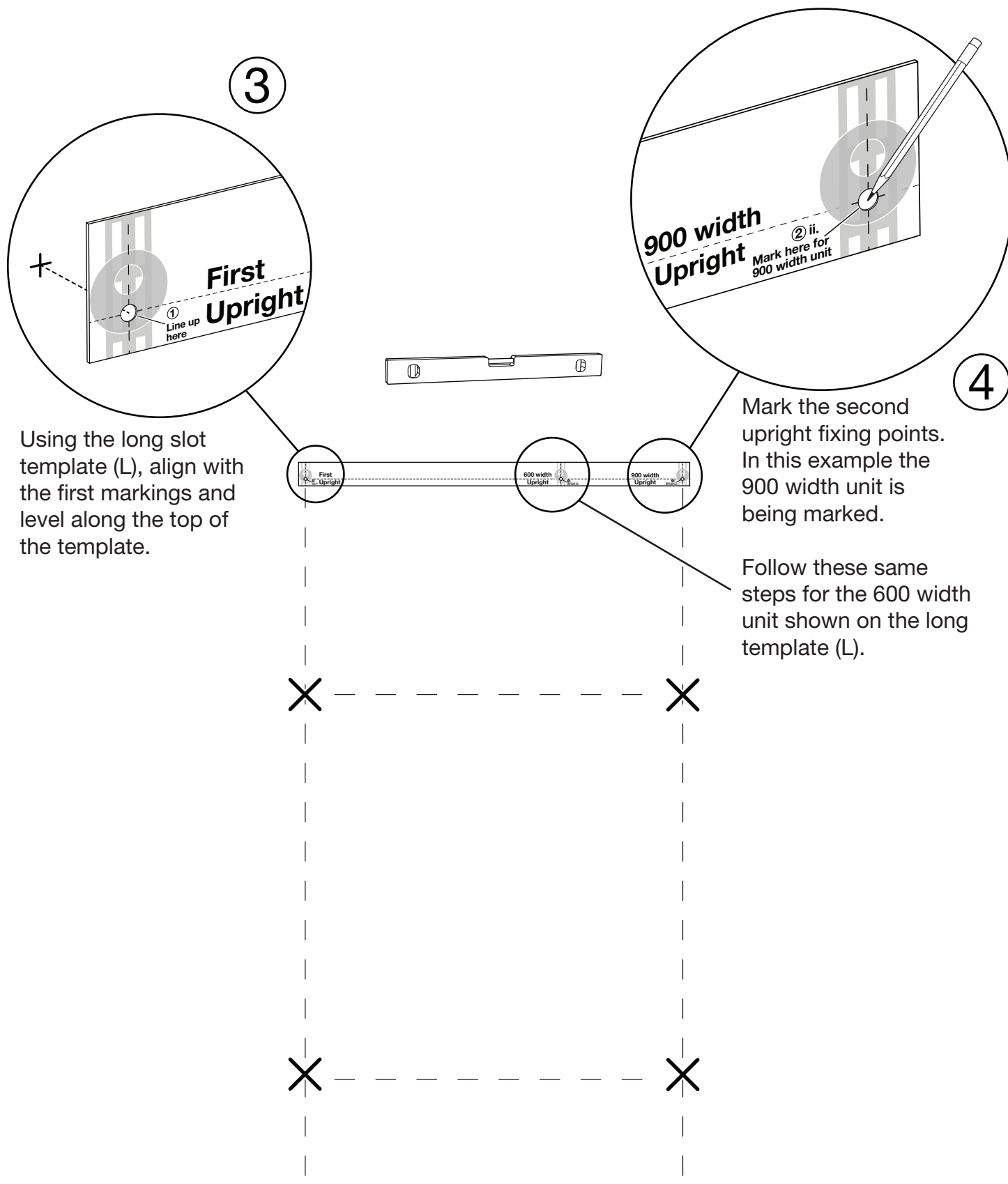
Small Slot Template

Printed template has been supplied to assist with marking the fixing points onto the wall. It is important that you are precise when marking the fixing points onto your wall. Please follow these steps carefully.



Long Slot Template

A printed template has been supplied to assist with marking the fixing points onto the wall. It is very important that you are precise when marking the fixing points onto your wall. Please follow these steps carefully.



Assembly

Important note: For wall plug compatibility refer to the official Fischer website. To list examples of suitable wall types; Concrete, Solid brick, solid sand-lime brick, plasterboard, chipboard, natural stone and more.

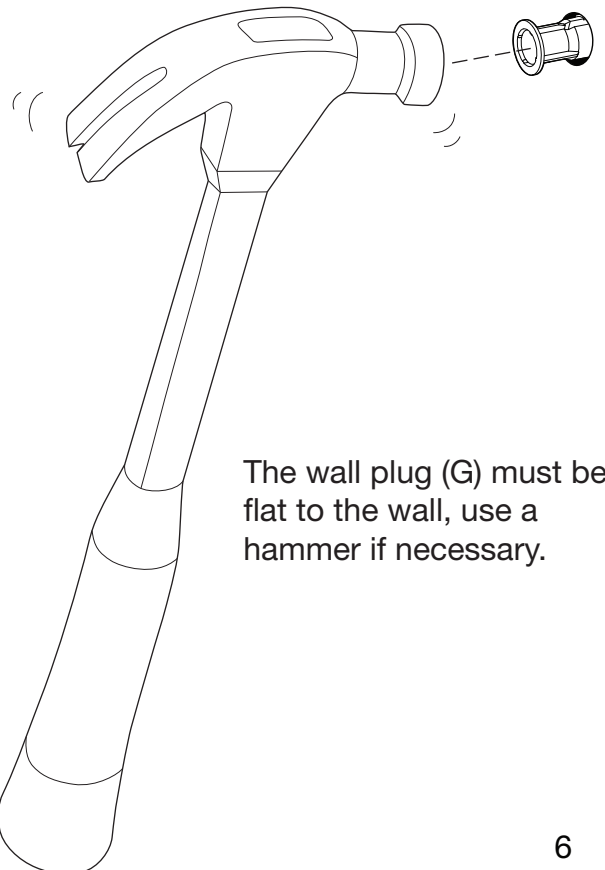
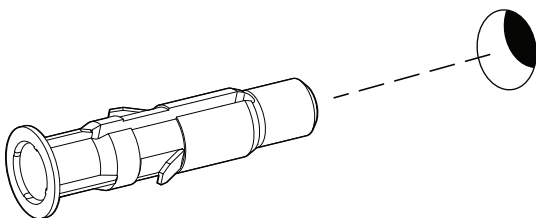


5

Drill each of the marked fixing points, ensure that you are using the correct drill bit for your wall.

6

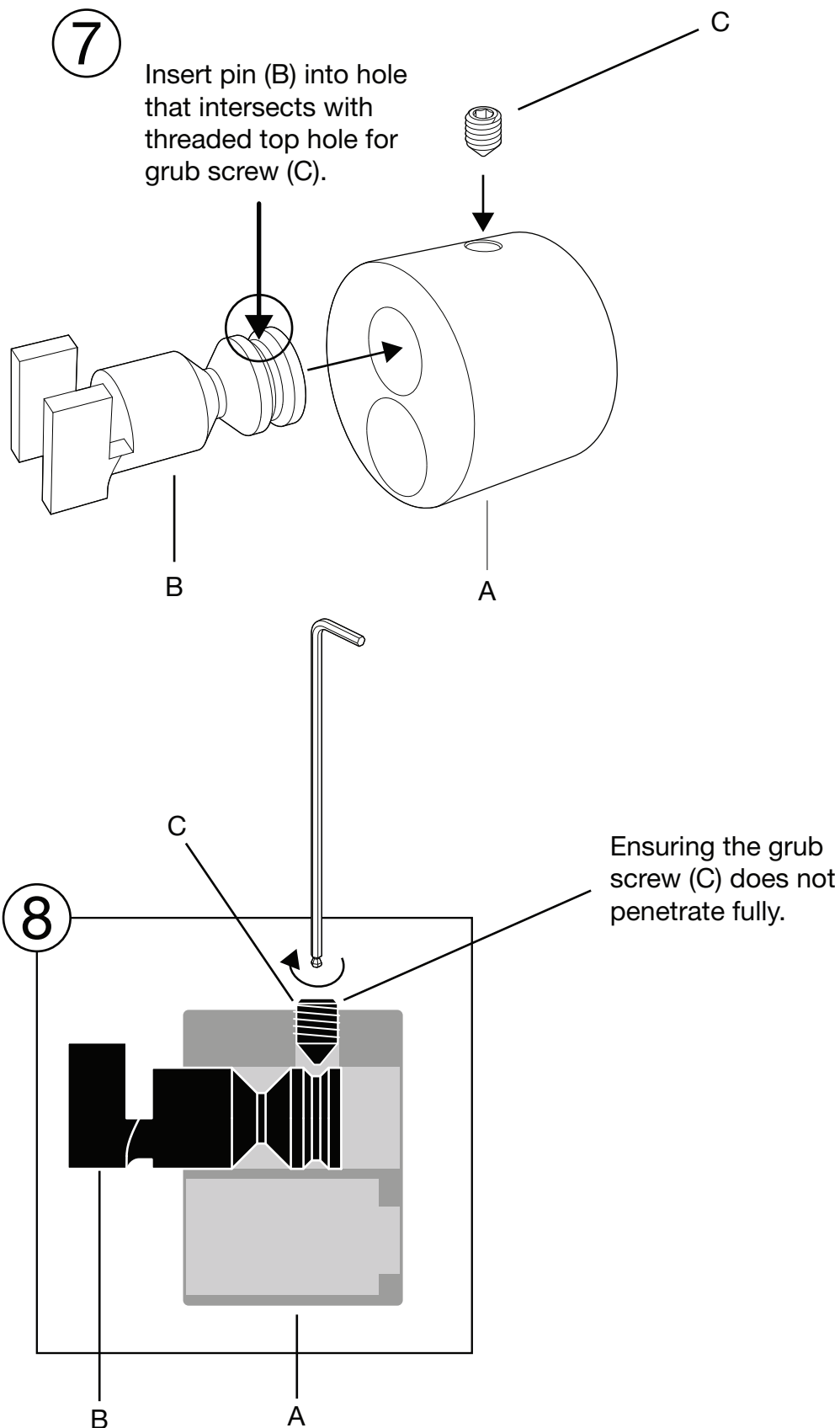
Insert the supplied wall plug (G). Please ensure the supplied wall plug is suitable for your wall.



The wall plug (G) must be flat to the wall, use a hammer if necessary.

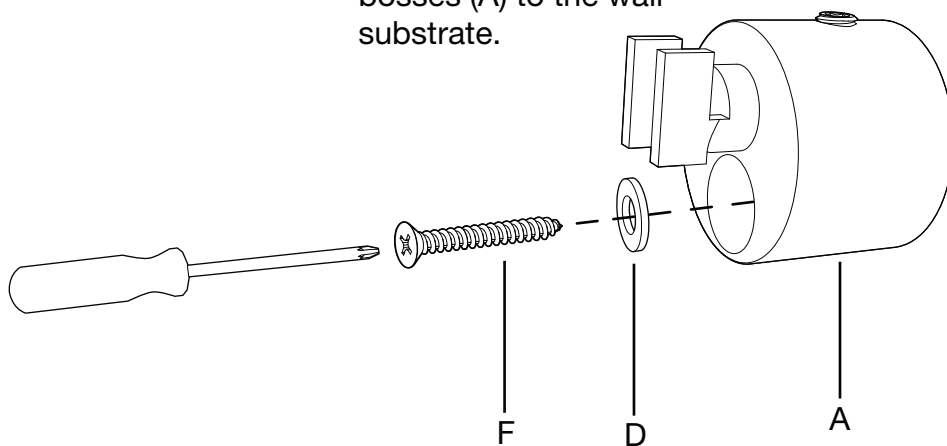
Assembly

Before attaching the wall boss (A) to the wall, fix grub screw (C) to pinch the back end of pin (B), (section after intended groove). This temporarily secures the pin (B) in place with additional tolerance for attaching the uprights (J).



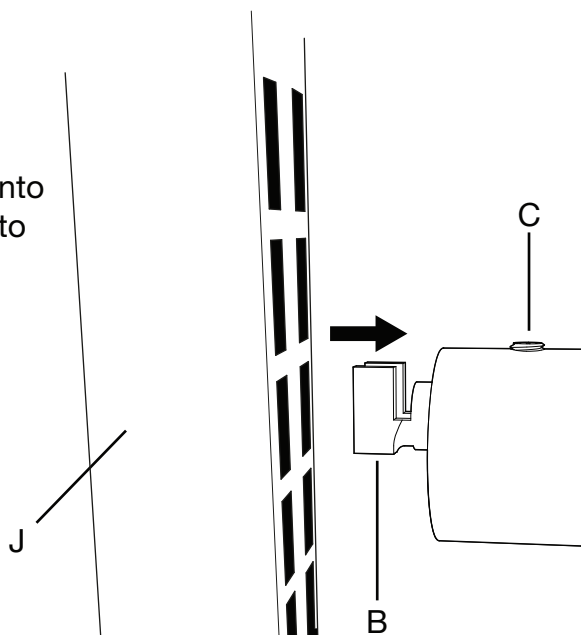
9

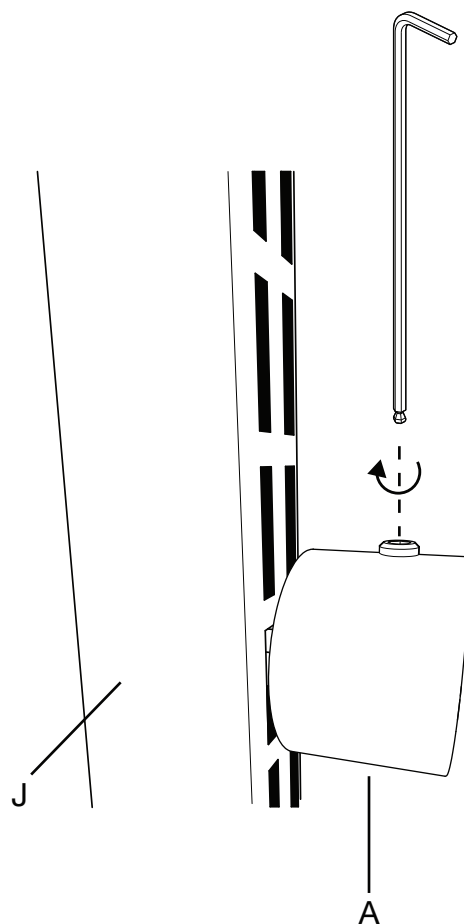
Fix assembled wall bosses (A) to the wall substrate.



10

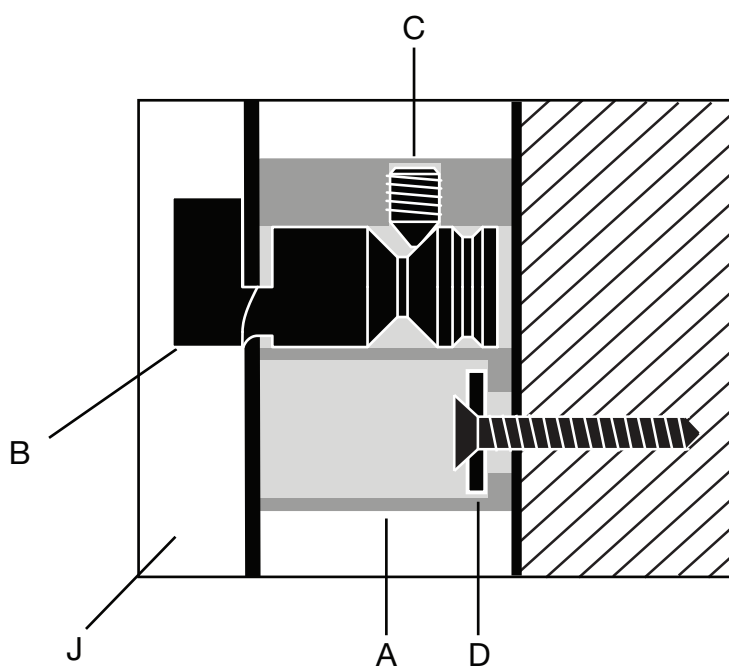
Slot upright (J) onto pin (B) attached to wall boss (A).

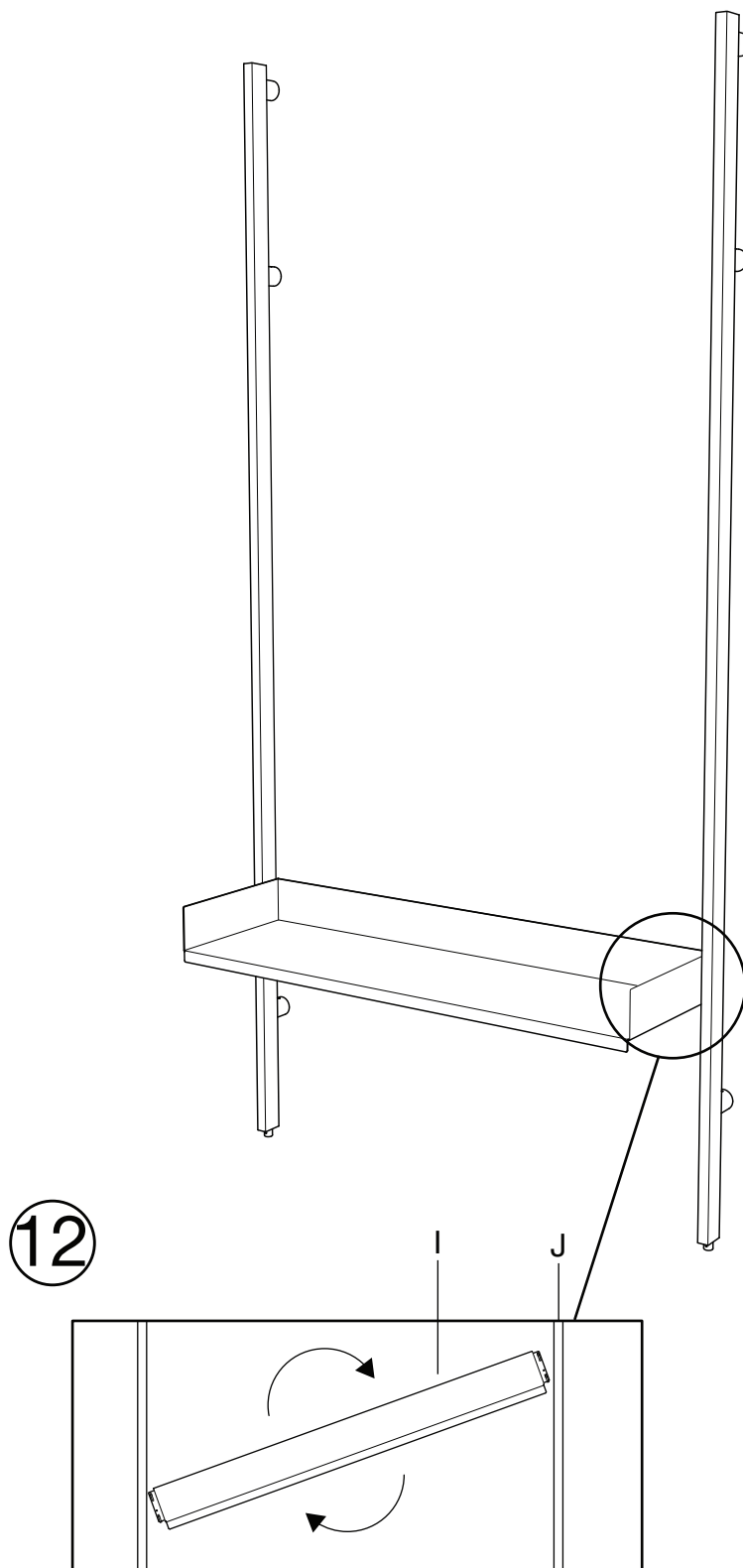




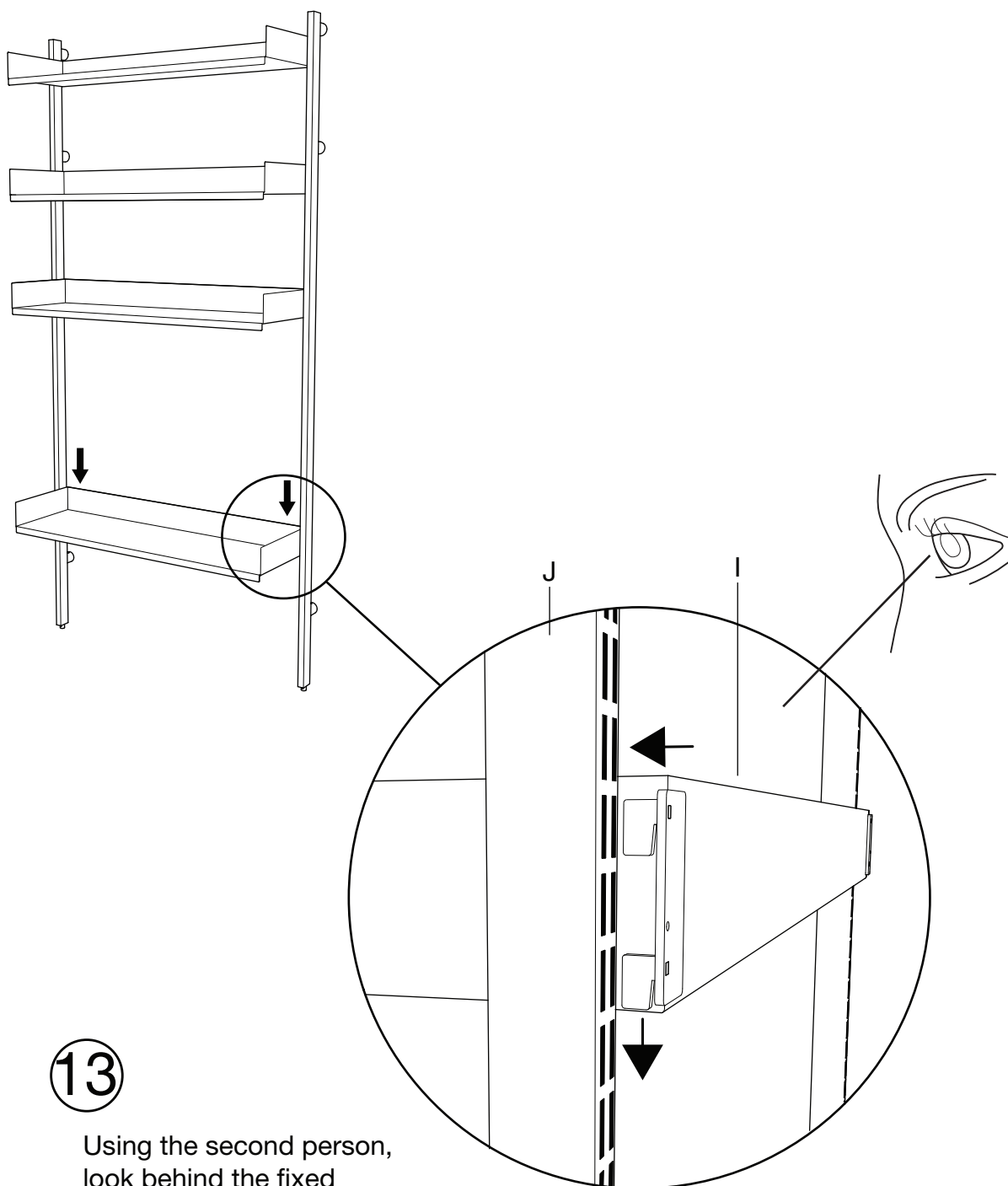
11

Loosen grub screw (C), allowing upright (J) to push closer to wall boss (A). Retighten grub screw (C) into place securing upright (J) firmly. Repeat this for the adjacent upright (J).





To attach the shelves (I), tilt the shelf (I) enough to fit between the uprights (J) and then straighten the shelf (I) so that it is level.

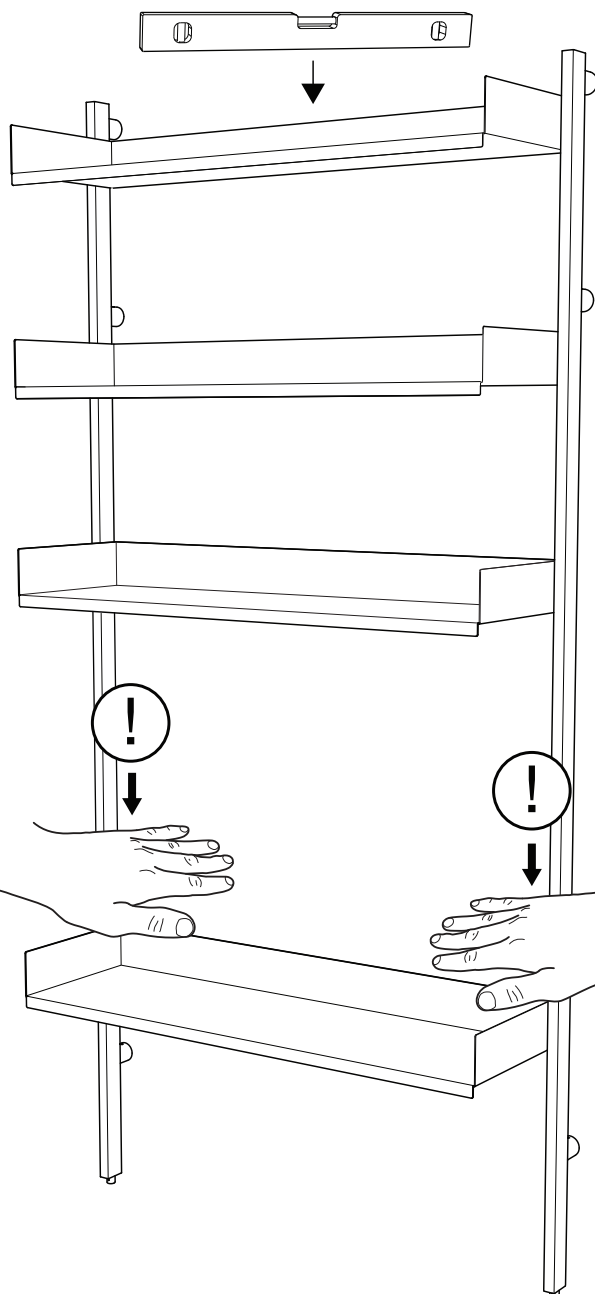


13

Using the second person,
look behind the fixed
uprights (J) to guide the
shelf hooks into the slots.

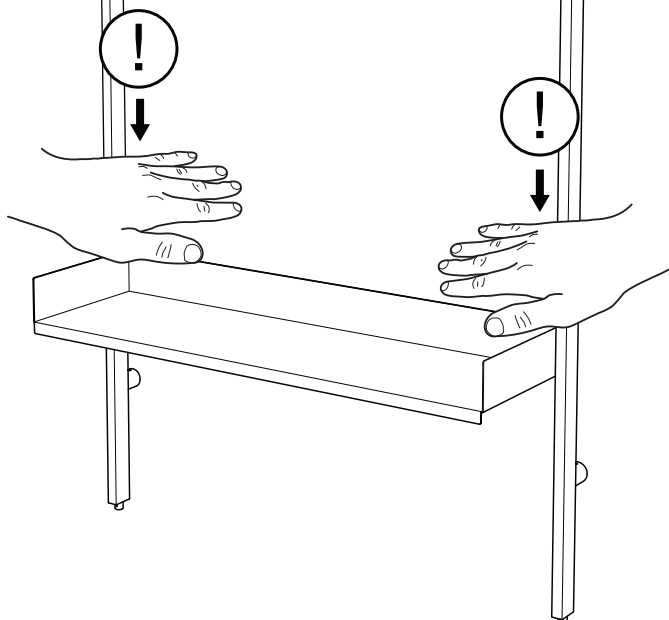
14

Check each shelf (I) is level, using a spirit level.



15

Once each shelf (I) is level, knock down connected corners to ensure slotted section is correctly in place.



Care Instructions

Slot shelving – designed by Terence Woodgate

The Slot wall adjustable shelving system is a pure minimal design where the components have clarity and are not compromised by visible slots or holes. By positioning the vertical supports slightly away from the wall, the shelves can be fixed to hidden slots facing the wall. The shelves come in two widths, 600mm and 900mm and simply hook on to the slotted supports, and can be adjusted vertically to within 25mm.

To prolong the life of the product and retain its appearance and functionality, we would like to give you some relevant information and care advice:

This unit is manufactured using powder coated mild steel and stainless steel components.

It is recommended that no abrasive cleaners or solvents are used to clean the unit. Please only use proprietary furniture polishes or alternatively, warm water with a diluted mild detergent.

We thank you for purchasing this product and wish you many years of enjoyable and functional use.

For more related products please visit: casefurniture.com



WARNING: Climbing or exceeding maximum load on shelving may result in serious or fatal injuries. Please keep children off shelving unit.



Case Furniture Ltd
London, SW18 2HZ
United Kingdom

info@casefurniture.com
casefurniture.com